

Figure A1.1 Baseline Monitoring - Mean Level of 24-hour Total Suspended Particulates (mg/L) at five air quality monitoring stations between 17 and 31 October 2013 during baseline monitoring period.

Ref: 0212330_baseline AQM_Graphs_rev a.xlsx



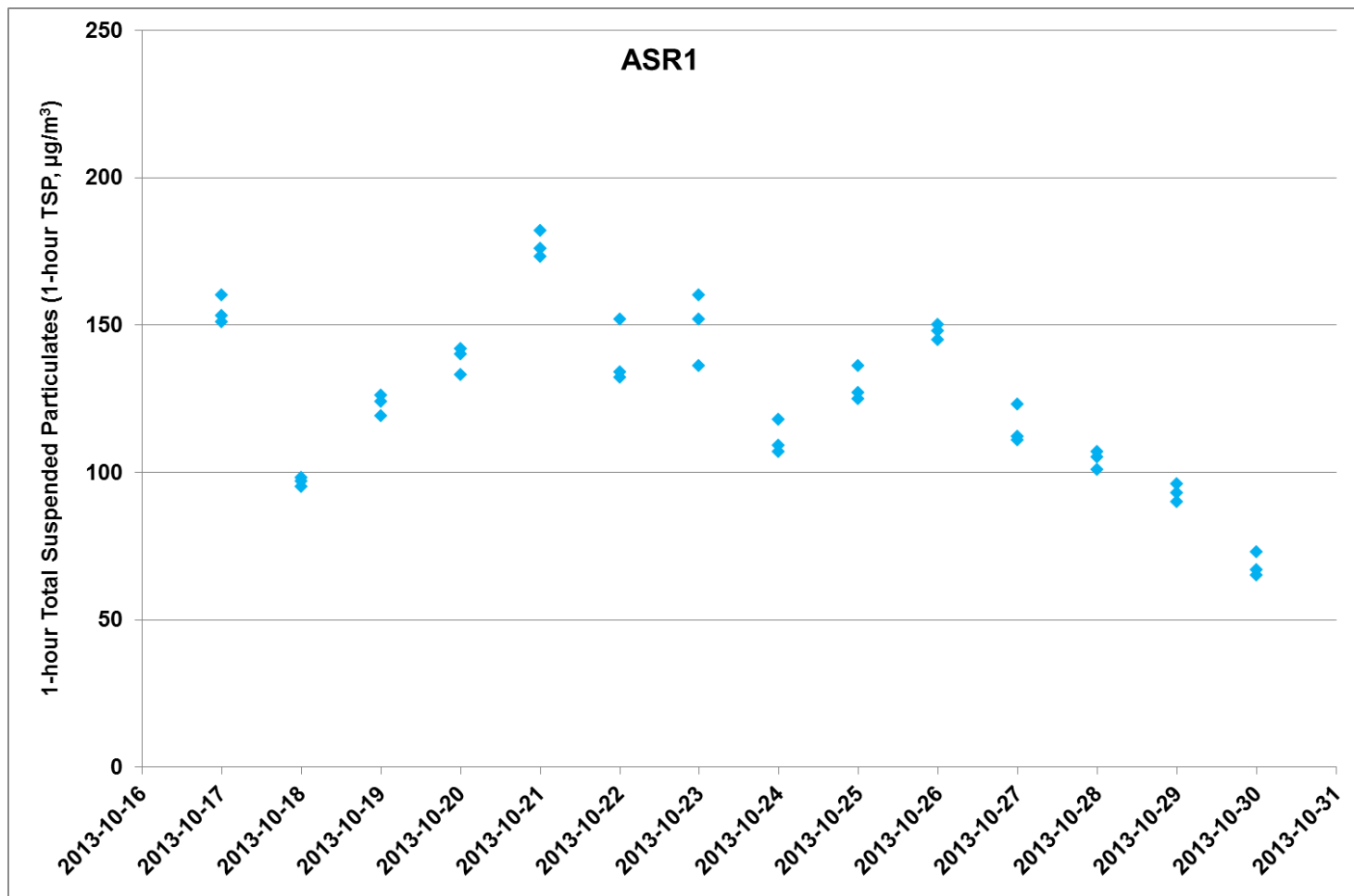


Figure A1.2 Baseline Monitoring - 1-hour Total Suspended Particulates (mg/L) at ASR1 between 17 and 30 October 2013 during baseline monitoring period.

Ref: 0212330_baseline AQM_Graphs_rev a.xlsx



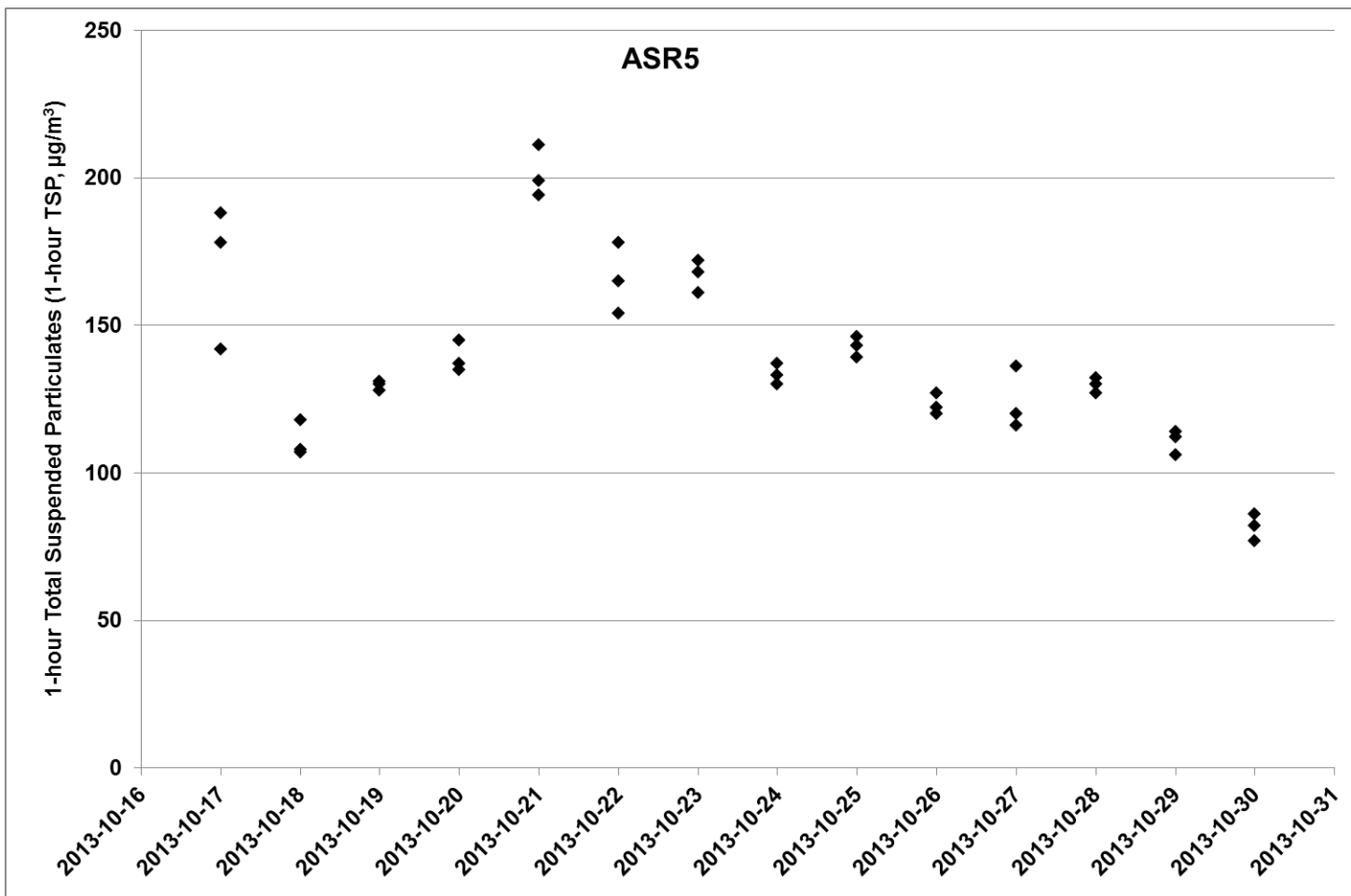


Figure A1.3 Baseline Monitoring - 1-hour Total Suspended Particulates (mg/L) at ASR5 between 17 and 30 October 2013 during baseline monitoring period.

Ref: 0212330_baseline AQM_Graphs_rev a.xlsx



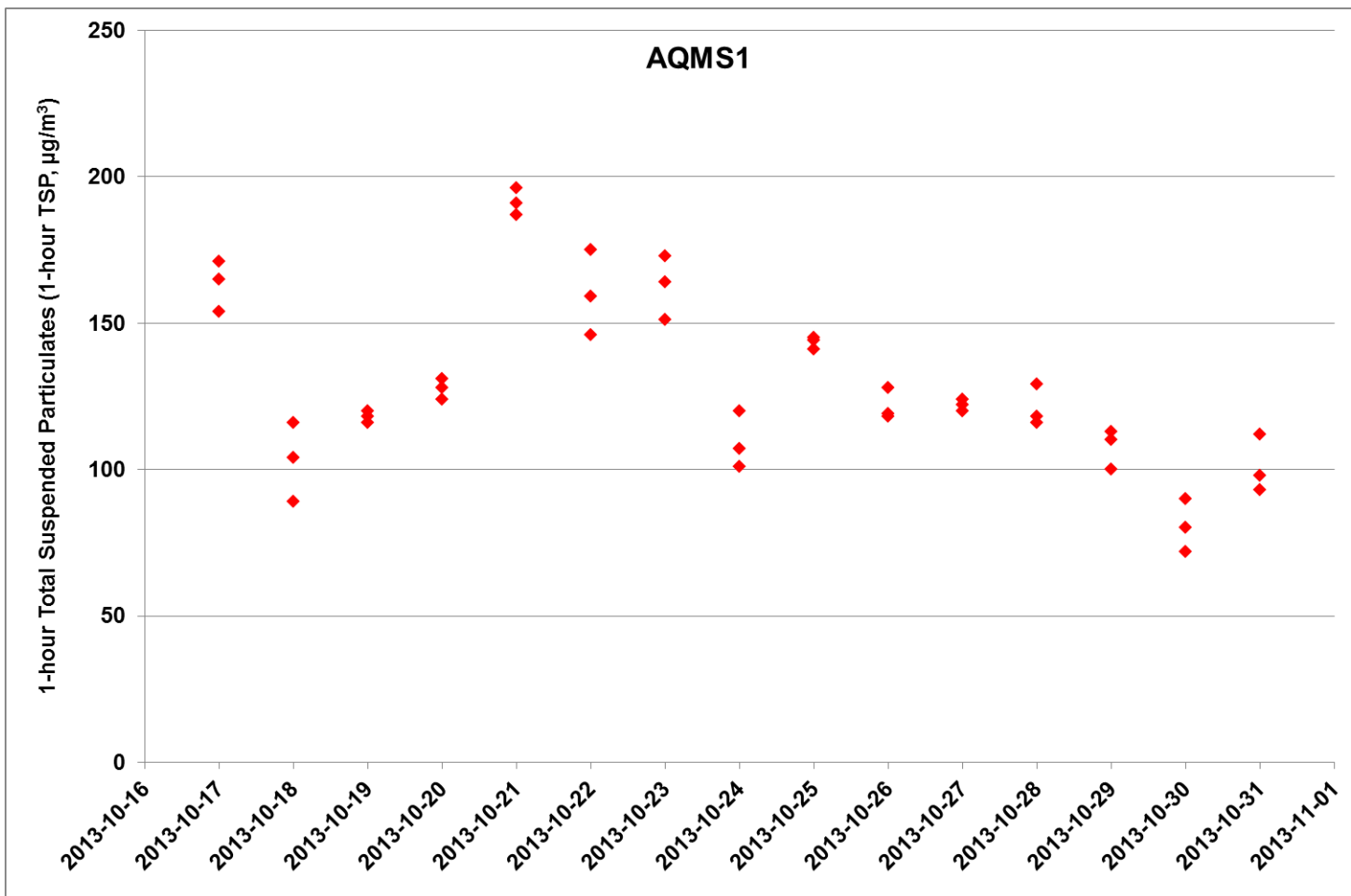


Figure A1.4 Baseline Monitoring - 1-hour Total Suspended Particulates (mg/L) at AQMS1 between 17 and 30 October 2013 during baseline monitoring period.

Ref: 0212330_baseline AQM_Graphs_rev a.xlsx



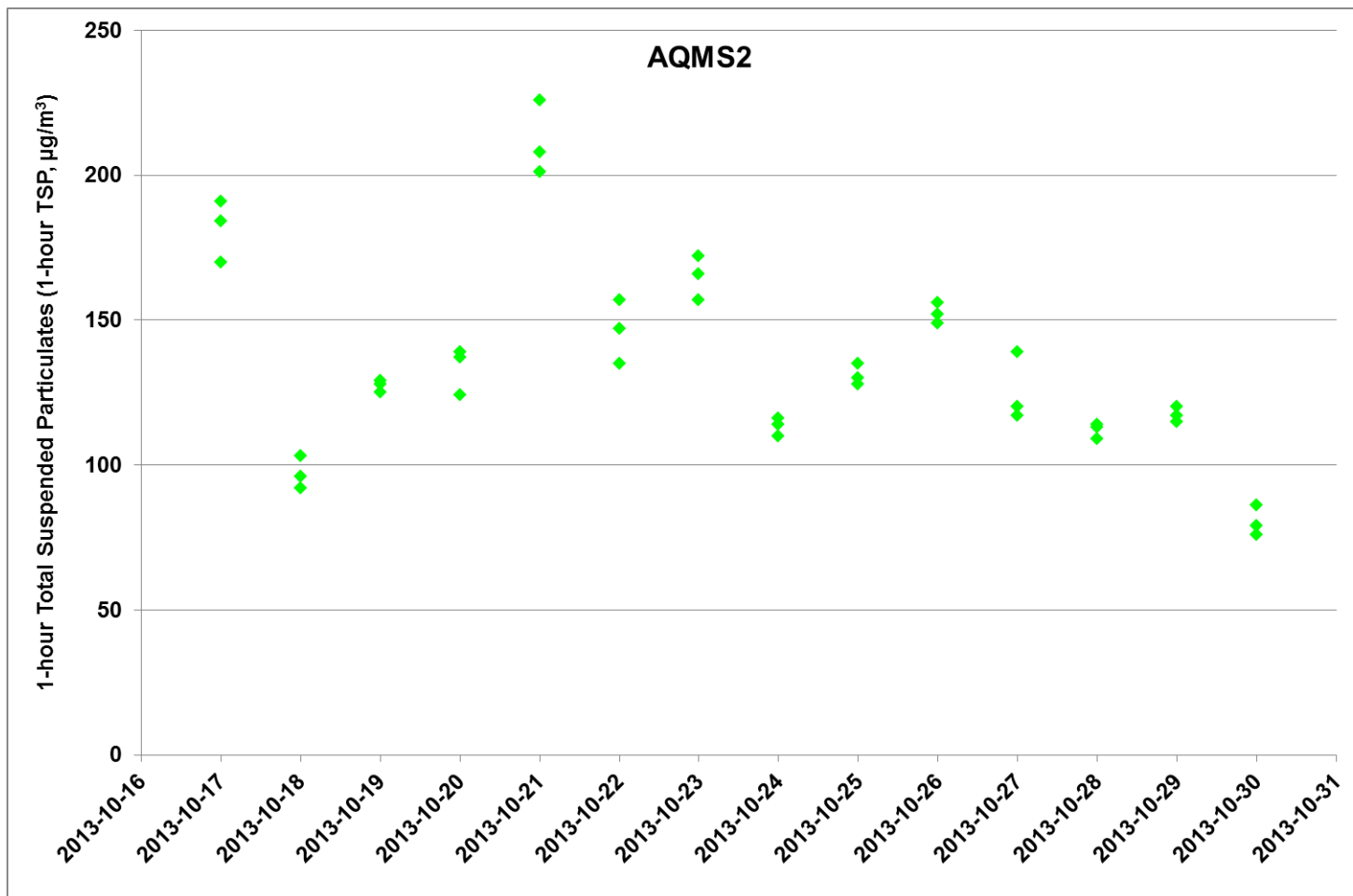


Figure A1.5 Baseline Monitoring - 1-hour Total Suspended Particulates (mg/L) at AQMS2 between 17 and 30 October 2013 during baseline monitoring period.

Ref: 0212330_baseline AQM_Graphs_rev a.xlsx



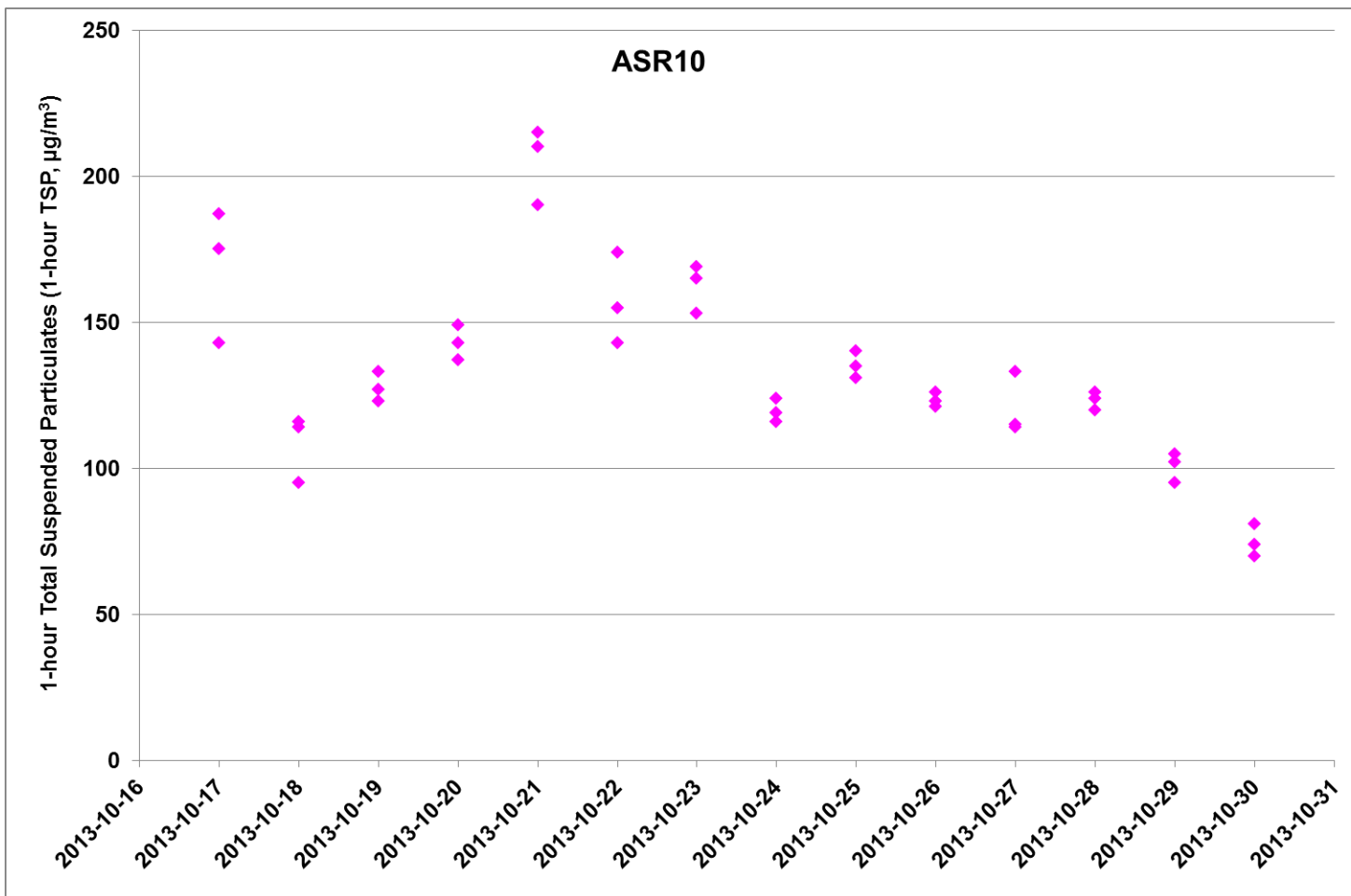


Figure A1.6 Baseline Monitoring - 1-hour Total Suspended Particulates (mg/L) at ASR10 between 17 and 30 October 2013 during baseline monitoring period.

Ref: 0212330_baseline AQM_Graphs_rev a.xlsx



Project	Works	Date	Station	Weather	Start time	End Time (hh:mm,	Parameters	Results	units	Sample ID	Elapsed		Total sampling	Flow			Total Volume (m ³)	Filter ID	Filter	
											Initial	Final		Initial	Final	Average			Initial	Final
TMCLKL	HY/2012/08	2013-10-30	ASR10	S	08:10	08:10	24-hour TSP	65	µg/m ³	8162	15521.65	15545.65	1440	1.25	1.25	1.25	1800.0	050574	2.7535	2.8709
TMCLKL	HY/2012/08	2013-10-17	ASR5	S	07:30	07:30	24-hour TSP	146	µg/m ³	0816	17673.90	17697.90	1440	1.27	1.27	1.27	1828.8	050505	2.6642	2.9321
TMCLKL	HY/2012/08	2013-10-18	ASR5	S	07:32	07:32	24-hour TSP	156	µg/m ³	0816	17697.90	17721.90	1440	1.27	1.27	1.27	1828.8	050510	2.6958	2.9804
TMCLKL	HY/2012/08	2013-10-19	ASR5	S	07:34	07:34	24-hour TSP	197	µg/m ³	0816	17721.90	17745.90	1440	1.27	1.27	1.27	1828.8	050520	2.7091	3.0702
TMCLKL	HY/2012/08	2013-10-20	ASR5	S	07:36	07:36	24-hour TSP	109	µg/m ³	0816	17745.90	17769.90	1440	1.27	1.27	1.27	1828.8	050524	2.7091	3.0541
TMCLKL	HY/2012/08	2013-10-21	ASR5	S	07:38	07:38	24-hour TSP	202	µg/m ³	0816	17769.90	17793.90	1440	1.27	1.27	1.27	1828.8	050529	2.7274	3.0976
TMCLKL	HY/2012/08	2013-10-22	ASR5	S	07:40	07:40	24-hour TSP	187	µg/m ³	0816	17793.90	17817.90	1440	1.27	1.27	1.27	1828.8	050534	2.7170	3.0589
TMCLKL	HY/2012/08	2013-10-23	ASR5	S	07:42	07:42	24-hour TSP	176	µg/m ³	0816	17817.90	17841.90	1440	1.27	1.27	1.27	1828.8	050539	2.7090	3.0316
TMCLKL	HY/2012/08	2013-10-24	ASR5	S	07:44	07:44	24-hour TSP	218	µg/m ³	0816	17841.90	17865.90	1440	1.27	1.27	1.27	1828.8	050544	2.7509	3.0150
TMCLKL	HY/2012/08	2013-10-25	ASR5	S	07:46	07:46	24-hour TSP	249	µg/m ³	0816	17865.90	17889.90	1440	1.27	1.27	1.27	1828.8	050549	2.7250	3.1807
TMCLKL	HY/2012/08	2013-10-26	ASR5	S	07:48	07:48	24-hour TSP	198	µg/m ³	0816	17889.90	17913.90	1440	1.27	1.27	1.27	1828.8	050554	2.6980	3.0602
TMCLKL	HY/2012/08	2013-10-27	ASR5	S	07:50	07:50	24-hour TSP	138	µg/m ³	0816	17913.90	17937.90	1440	1.27	1.27	1.27	1828.8	050559	2.7278	2.9807
TMCLKL	HY/2012/08	2013-10-28	ASR5	S	07:52	07:52	24-hour TSP	135	µg/m ³	0816	17937.90	17961.90	1440	1.27	1.27	1.27	1828.8	050564	2.7080	2.9556
TMCLKL	HY/2012/08	2013-10-29	ASR5	S	07:54	07:54	24-hour TSP	124	µg/m ³	0816	17961.90	17985.90	1440	1.27	1.27	1.27	1828.8	050569	2.7461	2.9720
TMCLKL	HY/2012/08	2013-10-30	ASR5	S	07:56	07:56	24-hour TSP	97	µg/m ³	0816	17985.90	18009.90	1440	1.27	1.27	1.27	1828.8	050572	2.7341	2.9118

* Note:

S = Sunny/Fine; C = Cloudy/Overcast; R = Rainy

Project	Works	Date	Station	Results	units	Weather*	Start time	End Time	Parameters
TMCLKL	HY/2012/08	2013-10-17	AQMS1	154	µg/m ³	S	14:57	15:57	1-hour TSP
TMCLKL	HY/2012/08	2013-10-17	AQMS1	171	µg/m ³	S	15:57	16:57	1-hour TSP
TMCLKL	HY/2012/08	2013-10-17	AQMS1	165	µg/m ³	S	16:57	17:57	1-hour TSP
TMCLKL	HY/2012/08	2013-10-18	AQMS1	116	µg/m ³	S	11:05	12:05	1-hour TSP
TMCLKL	HY/2012/08	2013-10-18	AQMS1	104	µg/m ³	S	12:05	13:05	1-hour TSP
TMCLKL	HY/2012/08	2013-10-18	AQMS1	89	µg/m ³	S	13:05	14:05	1-hour TSP
TMCLKL	HY/2012/08	2013-10-19	AQMS1	116	µg/m ³	S	11:00	12:00	1-hour TSP
TMCLKL	HY/2012/08	2013-10-19	AQMS1	118	µg/m ³	S	12:00	13:00	1-hour TSP
TMCLKL	HY/2012/08	2013-10-19	AQMS1	120	µg/m ³	S	13:00	14:00	1-hour TSP
TMCLKL	HY/2012/08	2013-10-20	AQMS1	131	µg/m ³	S	11:07	12:07	1-hour TSP
TMCLKL	HY/2012/08	2013-10-20	AQMS1	128	µg/m ³	S	12:07	13:07	1-hour TSP
TMCLKL	HY/2012/08	2013-10-20	AQMS1	124	µg/m ³	S	13:07	14:07	1-hour TSP
TMCLKL	HY/2012/08	2013-10-21	AQMS1	196	µg/m ³	S	11:06	12:06	1-hour TSP
TMCLKL	HY/2012/08	2013-10-21	AQMS1	191	µg/m ³	S	12:06	13:06	1-hour TSP
TMCLKL	HY/2012/08	2013-10-21	AQMS1	187	µg/m ³	S	13:06	14:06	1-hour TSP
TMCLKL	HY/2012/08	2013-10-22	AQMS1	175	µg/m ³	S	11:05	12:05	1-hour TSP
TMCLKL	HY/2012/08	2013-10-22	AQMS1	159	µg/m ³	S	12:05	13:05	1-hour TSP
TMCLKL	HY/2012/08	2013-10-22	AQMS1	146	µg/m ³	S	13:05	14:05	1-hour TSP
TMCLKL	HY/2012/08	2013-10-23	AQMS1	173	µg/m ³	S	11:10	12:10	1-hour TSP
TMCLKL	HY/2012/08	2013-10-23	AQMS1	164	µg/m ³	S	12:10	13:10	1-hour TSP
TMCLKL	HY/2012/08	2013-10-23	AQMS1	151	µg/m ³	S	13:10	14:10	1-hour TSP
TMCLKL	HY/2012/08	2013-10-24	AQMS1	120	µg/m ³	S	11:12	12:12	1-hour TSP
TMCLKL	HY/2012/08	2013-10-24	AQMS1	107	µg/m ³	S	12:12	13:12	1-hour TSP
TMCLKL	HY/2012/08	2013-10-24	AQMS1	101	µg/m ³	S	13:12	14:12	1-hour TSP
TMCLKL	HY/2012/08	2013-10-25	AQMS1	144	µg/m ³	S	11:10	12:10	1-hour TSP
TMCLKL	HY/2012/08	2013-10-25	AQMS1	141	µg/m ³	S	12:10	13:10	1-hour TSP
TMCLKL	HY/2012/08	2013-10-25	AQMS1	145	µg/m ³	S	13:10	14:10	1-hour TSP
TMCLKL	HY/2012/08	2013-10-26	AQMS1	118	µg/m ³	S	11:09	12:09	1-hour TSP
TMCLKL	HY/2012/08	2013-10-26	AQMS1	119	µg/m ³	S	12:09	13:09	1-hour TSP
TMCLKL	HY/2012/08	2013-10-26	AQMS1	128	µg/m ³	S	13:09	14:09	1-hour TSP
TMCLKL	HY/2012/08	2013-10-27	AQMS1	120	µg/m ³	S	11:06	12:06	1-hour TSP
TMCLKL	HY/2012/08	2013-10-27	AQMS1	122	µg/m ³	S	12:06	13:06	1-hour TSP
TMCLKL	HY/2012/08	2013-10-27	AQMS1	124	µg/m ³	S	13:06	14:06	1-hour TSP
TMCLKL	HY/2012/08	2013-10-28	AQMS1	116	µg/m ³	S	11:12	12:12	1-hour TSP
TMCLKL	HY/2012/08	2013-10-28	AQMS1	129	µg/m ³	S	12:12	13:12	1-hour TSP
TMCLKL	HY/2012/08	2013-10-28	AQMS1	118	µg/m ³	S	13:12	14:12	1-hour TSP
TMCLKL	HY/2012/08	2013-10-29	AQMS1	113	µg/m ³	S	11:11	12:11	1-hour TSP
TMCLKL	HY/2012/08	2013-10-29	AQMS1	110	µg/m ³	S	12:11	13:11	1-hour TSP
TMCLKL	HY/2012/08	2013-10-29	AQMS1	100	µg/m ³	S	13:11	14:11	1-hour TSP
TMCLKL	HY/2012/08	2013-10-30	AQMS1	90	µg/m ³	S	11:15	12:15	1-hour TSP
TMCLKL	HY/2012/08	2013-10-30	AQMS1	80	µg/m ³	S	12:15	13:15	1-hour TSP
TMCLKL	HY/2012/08	2013-10-30	AQMS1	72	µg/m ³	S	13:15	14:15	1-hour TSP
TMCLKL	HY/2012/08	2013-10-17	AQMS2	170	µg/m ³	S	15:10	16:10	1-hour TSP
TMCLKL	HY/2012/08	2013-10-17	AQMS2	191	µg/m ³	S	16:10	17:10	1-hour TSP
TMCLKL	HY/2012/08	2013-10-17	AQMS2	184	µg/m ³	S	17:10	18:10	1-hour TSP
TMCLKL	HY/2012/08	2013-10-18	AQMS2	103	µg/m ³	S	16:26	17:26	1-hour TSP
TMCLKL	HY/2012/08	2013-10-18	AQMS2	96	µg/m ³	S	17:26	18:26	1-hour TSP
TMCLKL	HY/2012/08	2013-10-18	AQMS2	92	µg/m ³	S	18:26	19:26	1-hour TSP
TMCLKL	HY/2012/08	2013-10-19	AQMS2	128	µg/m ³	S	14:22	15:22	1-hour TSP
TMCLKL	HY/2012/08	2013-10-19	AQMS2	125	µg/m ³	S	15:22	16:22	1-hour TSP

Project	Works	Date	Station	Results	units	Weather*	Start time	End Time	Parameters
TMCLKL	HY/2012/08	2013-10-19	AQMS2	129	µg/m ³	S	16:22	17:22	1-hour TSP
TMCLKL	HY/2012/08	2013-10-20	AQMS2	124	µg/m ³	S	14:25	15:25	1-hour TSP
TMCLKL	HY/2012/08	2013-10-20	AQMS2	139	µg/m ³	S	15:25	16:25	1-hour TSP
TMCLKL	HY/2012/08	2013-10-20	AQMS2	137	µg/m ³	S	16:25	17:25	1-hour TSP
TMCLKL	HY/2012/08	2013-10-21	AQMS2	226	µg/m ³	S	14:30	15:30	1-hour TSP
TMCLKL	HY/2012/08	2013-10-21	AQMS2	208	µg/m ³	S	15:30	16:30	1-hour TSP
TMCLKL	HY/2012/08	2013-10-21	AQMS2	201	µg/m ³	S	16:30	17:30	1-hour TSP
TMCLKL	HY/2012/08	2013-10-22	AQMS2	157	µg/m ³	S	14:30	15:30	1-hour TSP
TMCLKL	HY/2012/08	2013-10-22	AQMS2	147	µg/m ³	S	15:30	16:30	1-hour TSP
TMCLKL	HY/2012/08	2013-10-22	AQMS2	135	µg/m ³	S	16:30	17:30	1-hour TSP
TMCLKL	HY/2012/08	2013-10-23	AQMS2	166	µg/m ³	S	14:31	15:31	1-hour TSP
TMCLKL	HY/2012/08	2013-10-23	AQMS2	172	µg/m ³	S	15:31	16:31	1-hour TSP
TMCLKL	HY/2012/08	2013-10-23	AQMS2	157	µg/m ³	S	16:31	17:31	1-hour TSP
TMCLKL	HY/2012/08	2013-10-24	AQMS2	116	µg/m ³	S	14:34	15:34	1-hour TSP
TMCLKL	HY/2012/08	2013-10-24	AQMS2	114	µg/m ³	S	15:34	16:34	1-hour TSP
TMCLKL	HY/2012/08	2013-10-24	AQMS2	110	µg/m ³	S	16:34	17:34	1-hour TSP
TMCLKL	HY/2012/08	2013-10-25	AQMS2	135	µg/m ³	S	14:31	15:31	1-hour TSP
TMCLKL	HY/2012/08	2013-10-25	AQMS2	130	µg/m ³	S	15:31	16:31	1-hour TSP
TMCLKL	HY/2012/08	2013-10-25	AQMS2	128	µg/m ³	S	16:31	17:31	1-hour TSP
TMCLKL	HY/2012/08	2013-10-26	AQMS2	156	µg/m ³	S	14:33	15:33	1-hour TSP
TMCLKL	HY/2012/08	2013-10-26	AQMS2	149	µg/m ³	S	15:33	16:33	1-hour TSP
TMCLKL	HY/2012/08	2013-10-26	AQMS2	152	µg/m ³	S	16:33	17:33	1-hour TSP
TMCLKL	HY/2012/08	2013-10-27	AQMS2	139	µg/m ³	S	14:25	15:25	1-hour TSP
TMCLKL	HY/2012/08	2013-10-27	AQMS2	120	µg/m ³	S	15:25	16:25	1-hour TSP
TMCLKL	HY/2012/08	2013-10-27	AQMS2	117	µg/m ³	S	16:25	17:25	1-hour TSP
TMCLKL	HY/2012/08	2013-10-28	AQMS2	113	µg/m ³	S	14:35	15:35	1-hour TSP
TMCLKL	HY/2012/08	2013-10-28	AQMS2	109	µg/m ³	S	15:35	16:35	1-hour TSP
TMCLKL	HY/2012/08	2013-10-28	AQMS2	114	µg/m ³	S	16:35	17:35	1-hour TSP
TMCLKL	HY/2012/08	2013-10-29	AQMS2	120	µg/m ³	S	14:33	15:33	1-hour TSP
TMCLKL	HY/2012/08	2013-10-29	AQMS2	117	µg/m ³	S	15:33	16:33	1-hour TSP
TMCLKL	HY/2012/08	2013-10-29	AQMS2	115	µg/m ³	S	16:33	17:33	1-hour TSP
TMCLKL	HY/2012/08	2013-10-30	AQMS2	86	µg/m ³	S	14:38	15:38	1-hour TSP
TMCLKL	HY/2012/08	2013-10-30	AQMS2	79	µg/m ³	S	15:38	16:38	1-hour TSP
TMCLKL	HY/2012/08	2013-10-30	AQMS2	76	µg/m ³	S	16:38	17:38	1-hour TSP
TMCLKL	HY/2012/08	2013-10-17	ASR1	151	µg/m ³	S	11:00	12:00	1-hour TSP
TMCLKL	HY/2012/08	2013-10-17	ASR1	153	µg/m ³	S	12:00	13:00	1-hour TSP
TMCLKL	HY/2012/08	2013-10-17	ASR1	160	µg/m ³	S	13:00	14:00	1-hour TSP
TMCLKL	HY/2012/08	2013-10-18	ASR1	98	µg/m ³	S	14:15	15:15	1-hour TSP
TMCLKL	HY/2012/08	2013-10-18	ASR1	95	µg/m ³	S	15:15	16:15	1-hour TSP
TMCLKL	HY/2012/08	2013-10-18	ASR1	97	µg/m ³	S	16:15	17:15	1-hour TSP
TMCLKL	HY/2012/08	2013-10-19	ASR1	119	µg/m ³	S	14:10	15:10	1-hour TSP
TMCLKL	HY/2012/08	2013-10-19	ASR1	126	µg/m ³	S	15:10	16:10	1-hour TSP
TMCLKL	HY/2012/08	2013-10-19	ASR1	124	µg/m ³	S	16:10	17:10	1-hour TSP
TMCLKL	HY/2012/08	2013-10-20	ASR1	140	µg/m ³	S	14:16	15:16	1-hour TSP
TMCLKL	HY/2012/08	2013-10-20	ASR1	142	µg/m ³	S	15:16	16:16	1-hour TSP
TMCLKL	HY/2012/08	2013-10-20	ASR1	133	µg/m ³	S	16:16	17:16	1-hour TSP
TMCLKL	HY/2012/08	2013-10-21	ASR1	182	µg/m ³	S	14:20	15:20	1-hour TSP
TMCLKL	HY/2012/08	2013-10-21	ASR1	176	µg/m ³	S	15:20	16:20	1-hour TSP
TMCLKL	HY/2012/08	2013-10-21	ASR1	173	µg/m ³	S	16:20	17:20	1-hour TSP
TMCLKL	HY/2012/08	2013-10-22	ASR1	134	µg/m ³	S	14:20	15:20	1-hour TSP

Project	Works	Date	Station	Results	units	Weather*	Start time	End Time	Parameters
TMCLKL	HY/2012/08	2013-10-22	ASR1	152	µg/m ³	S	15:20	16:20	1-hour TSP
TMCLKL	HY/2012/08	2013-10-22	ASR1	132	µg/m ³	S	16:20	17:20	1-hour TSP
TMCLKL	HY/2012/08	2013-10-23	ASR1	160	µg/m ³	S	14:22	15:22	1-hour TSP
TMCLKL	HY/2012/08	2013-10-23	ASR1	152	µg/m ³	S	15:22	16:22	1-hour TSP
TMCLKL	HY/2012/08	2013-10-23	ASR1	136	µg/m ³	S	16:22	17:22	1-hour TSP
TMCLKL	HY/2012/08	2013-10-24	ASR1	118	µg/m ³	S	14:25	15:25	1-hour TSP
TMCLKL	HY/2012/08	2013-10-24	ASR1	107	µg/m ³	S	15:25	16:25	1-hour TSP
TMCLKL	HY/2012/08	2013-10-24	ASR1	109	µg/m ³	S	16:25	17:25	1-hour TSP
TMCLKL	HY/2012/08	2013-10-25	ASR1	136	µg/m ³	S	14:22	15:22	1-hour TSP
TMCLKL	HY/2012/08	2013-10-25	ASR1	127	µg/m ³	S	15:22	16:22	1-hour TSP
TMCLKL	HY/2012/08	2013-10-25	ASR1	125	µg/m ³	S	16:22	17:22	1-hour TSP
TMCLKL	HY/2012/08	2013-10-26	ASR1	150	µg/m ³	S	14:22	15:22	1-hour TSP
TMCLKL	HY/2012/08	2013-10-26	ASR1	148	µg/m ³	S	15:22	16:22	1-hour TSP
TMCLKL	HY/2012/08	2013-10-26	ASR1	145	µg/m ³	S	16:22	17:22	1-hour TSP
TMCLKL	HY/2012/08	2013-10-27	ASR1	123	µg/m ³	S	14:15	15:15	1-hour TSP
TMCLKL	HY/2012/08	2013-10-27	ASR1	112	µg/m ³	S	15:15	16:15	1-hour TSP
TMCLKL	HY/2012/08	2013-10-27	ASR1	111	µg/m ³	S	16:15	17:15	1-hour TSP
TMCLKL	HY/2012/08	2013-10-28	ASR1	105	µg/m ³	S	14:27	15:27	1-hour TSP
TMCLKL	HY/2012/08	2013-10-28	ASR1	107	µg/m ³	S	15:27	16:27	1-hour TSP
TMCLKL	HY/2012/08	2013-10-28	ASR1	101	µg/m ³	S	16:27	17:27	1-hour TSP
TMCLKL	HY/2012/08	2013-10-29	ASR1	93	µg/m ³	S	14:23	15:23	1-hour TSP
TMCLKL	HY/2012/08	2013-10-29	ASR1	90	µg/m ³	S	15:23	16:23	1-hour TSP
TMCLKL	HY/2012/08	2013-10-29	ASR1	96	µg/m ³	S	16:23	17:23	1-hour TSP
TMCLKL	HY/2012/08	2013-10-30	ASR1	73	µg/m ³	S	14:30	15:30	1-hour TSP
TMCLKL	HY/2012/08	2013-10-30	ASR1	67	µg/m ³	S	15:30	16:30	1-hour TSP
TMCLKL	HY/2012/08	2013-10-30	ASR1	65	µg/m ³	S	16:30	17:30	1-hour TSP
TMCLKL	HY/2012/08	2013-10-17	ASR10	187	µg/m ³	S	07:46	08:46	1-hour TSP
TMCLKL	HY/2012/08	2013-10-17	ASR10	175	µg/m ³	S	08:46	09:46	1-hour TSP
TMCLKL	HY/2012/08	2013-10-17	ASR10	143	µg/m ³	S	09:46	10:46	1-hour TSP
TMCLKL	HY/2012/08	2013-10-18	ASR10	114	µg/m ³	S	07:50	08:50	1-hour TSP
TMCLKL	HY/2012/08	2013-10-18	ASR10	116	µg/m ³	S	08:50	09:50	1-hour TSP
TMCLKL	HY/2012/08	2013-10-18	ASR10	95	µg/m ³	S	09:50	10:50	1-hour TSP
TMCLKL	HY/2012/08	2013-10-19	ASR10	127	µg/m ³	S	07:50	08:50	1-hour TSP
TMCLKL	HY/2012/08	2013-10-19	ASR10	133	µg/m ³	S	08:50	09:50	1-hour TSP
TMCLKL	HY/2012/08	2013-10-19	ASR10	123	µg/m ³	S	09:50	10:50	1-hour TSP
TMCLKL	HY/2012/08	2013-10-20	ASR10	149	µg/m ³	S	07:55	08:55	1-hour TSP
TMCLKL	HY/2012/08	2013-10-20	ASR10	137	µg/m ³	S	08:55	09:55	1-hour TSP
TMCLKL	HY/2012/08	2013-10-20	ASR10	143	µg/m ³	S	09:55	10:55	1-hour TSP
TMCLKL	HY/2012/08	2013-10-21	ASR10	215	µg/m ³	S	07:55	08:55	1-hour TSP
TMCLKL	HY/2012/08	2013-10-21	ASR10	210	µg/m ³	S	08:55	09:55	1-hour TSP
TMCLKL	HY/2012/08	2013-10-21	ASR10	190	µg/m ³	S	09:55	10:55	1-hour TSP
TMCLKL	HY/2012/08	2013-10-22	ASR10	174	µg/m ³	S	07:56	08:56	1-hour TSP
TMCLKL	HY/2012/08	2013-10-22	ASR10	155	µg/m ³	S	08:56	09:56	1-hour TSP
TMCLKL	HY/2012/08	2013-10-22	ASR10	143	µg/m ³	S	09:56	10:56	1-hour TSP
TMCLKL	HY/2012/08	2013-10-23	ASR10	169	µg/m ³	S	07:58	08:58	1-hour TSP
TMCLKL	HY/2012/08	2013-10-23	ASR10	165	µg/m ³	S	08:58	09:58	1-hour TSP
TMCLKL	HY/2012/08	2013-10-23	ASR10	153	µg/m ³	S	09:58	10:58	1-hour TSP
TMCLKL	HY/2012/08	2013-10-24	ASR10	124	µg/m ³	S	08:00	09:00	1-hour TSP
TMCLKL	HY/2012/08	2013-10-24	ASR10	119	µg/m ³	S	09:00	10:00	1-hour TSP
TMCLKL	HY/2012/08	2013-10-24	ASR10	116	µg/m ³	S	10:00	11:00	1-hour TSP

Project	Works	Date	Station	Results	units	Weather*	Start time	End Time	Parameters
TMCLKL	HY/2012/08	2013-10-25	ASR10	140	µg/m ³	S	08:02	09:02	1-hour TSP
TMCLKL	HY/2012/08	2013-10-25	ASR10	131	µg/m ³	S	09:02	10:02	1-hour TSP
TMCLKL	HY/2012/08	2013-10-25	ASR10	135	µg/m ³	S	10:02	11:02	1-hour TSP
TMCLKL	HY/2012/08	2013-10-26	ASR10	121	µg/m ³	S	08:00	09:00	1-hour TSP
TMCLKL	HY/2012/08	2013-10-26	ASR10	123	µg/m ³	S	09:00	10:00	1-hour TSP
TMCLKL	HY/2012/08	2013-10-26	ASR10	126	µg/m ³	S	10:00	11:00	1-hour TSP
TMCLKL	HY/2012/08	2013-10-27	ASR10	133	µg/m ³	S	07:55	08:55	1-hour TSP
TMCLKL	HY/2012/08	2013-10-27	ASR10	115	µg/m ³	S	08:55	09:55	1-hour TSP
TMCLKL	HY/2012/08	2013-10-27	ASR10	114	µg/m ³	S	08:55	10:55	1-hour TSP
TMCLKL	HY/2012/08	2013-10-28	ASR10	126	µg/m ³	S	08:03	09:03	1-hour TSP
TMCLKL	HY/2012/08	2013-10-28	ASR10	124	µg/m ³	S	09:03	10:03	1-hour TSP
TMCLKL	HY/2012/08	2013-10-28	ASR10	120	µg/m ³	S	10:03	11:03	1-hour TSP
TMCLKL	HY/2012/08	2013-10-29	ASR10	95	µg/m ³	S	08:00	09:00	1-hour TSP
TMCLKL	HY/2012/08	2013-10-29	ASR10	105	µg/m ³	S	09:00	10:00	1-hour TSP
TMCLKL	HY/2012/08	2013-10-29	ASR10	102	µg/m ³	S	10:00	11:00	1-hour TSP
TMCLKL	HY/2012/08	2013-10-30	ASR10	81	µg/m ³	S	08:05	09:05	1-hour TSP
TMCLKL	HY/2012/08	2013-10-30	ASR10	74	µg/m ³	S	09:05	10:05	1-hour TSP
TMCLKL	HY/2012/08	2013-10-30	ASR10	70	µg/m ³	S	10:05	11:05	1-hour TSP
TMCLKL	HY/2012/08	2013-10-17	ASR5	188	µg/m ³	S	07:25	08:25	1-hour TSP
TMCLKL	HY/2012/08	2013-10-17	ASR5	178	µg/m ³	S	08:25	09:25	1-hour TSP
TMCLKL	HY/2012/08	2013-10-17	ASR5	142	µg/m ³	S	09:25	10:25	1-hour TSP
TMCLKL	HY/2012/08	2013-10-18	ASR5	108	µg/m ³	S	07:35	08:35	1-hour TSP
TMCLKL	HY/2012/08	2013-10-18	ASR5	118	µg/m ³	S	08:35	09:35	1-hour TSP
TMCLKL	HY/2012/08	2013-10-18	ASR5	107	µg/m ³	S	09:35	10:35	1-hour TSP
TMCLKL	HY/2012/08	2013-10-19	ASR5	131	µg/m ³	S	07:37	08:37	1-hour TSP
TMCLKL	HY/2012/08	2013-10-19	ASR5	130	µg/m ³	S	08:37	09:37	1-hour TSP
TMCLKL	HY/2012/08	2013-10-19	ASR5	128	µg/m ³	S	09:37	10:37	1-hour TSP
TMCLKL	HY/2012/08	2013-10-20	ASR5	145	µg/m ³	S	07:38	08:38	1-hour TSP
TMCLKL	HY/2012/08	2013-10-20	ASR5	137	µg/m ³	S	08:38	09:38	1-hour TSP
TMCLKL	HY/2012/08	2013-10-20	ASR5	135	µg/m ³	S	09:38	10:38	1-hour TSP
TMCLKL	HY/2012/08	2013-10-21	ASR5	211	µg/m ³	S	07:35	08:35	1-hour TSP
TMCLKL	HY/2012/08	2013-10-21	ASR5	199	µg/m ³	S	08:35	09:35	1-hour TSP
TMCLKL	HY/2012/08	2013-10-21	ASR5	194	µg/m ³	S	09:35	10:35	1-hour TSP
TMCLKL	HY/2012/08	2013-10-22	ASR5	178	µg/m ³	S	07:38	08:38	1-hour TSP
TMCLKL	HY/2012/08	2013-10-22	ASR5	165	µg/m ³	S	08:38	09:38	1-hour TSP
TMCLKL	HY/2012/08	2013-10-22	ASR5	154	µg/m ³	S	09:38	10:38	1-hour TSP
TMCLKL	HY/2012/08	2013-10-23	ASR5	172	µg/m ³	S	07:40	08:40	1-hour TSP
TMCLKL	HY/2012/08	2013-10-23	ASR5	168	µg/m ³	S	08:40	09:40	1-hour TSP
TMCLKL	HY/2012/08	2013-10-23	ASR5	161	µg/m ³	S	09:40	10:40	1-hour TSP
TMCLKL	HY/2012/08	2013-10-24	ASR5	130	µg/m ³	S	07:41	08:41	1-hour TSP
TMCLKL	HY/2012/08	2013-10-24	ASR5	133	µg/m ³	S	08:41	09:41	1-hour TSP
TMCLKL	HY/2012/08	2013-10-24	ASR5	137	µg/m ³	S	09:41	10:41	1-hour TSP
TMCLKL	HY/2012/08	2013-10-25	ASR5	139	µg/m ³	S	07:44	08:44	1-hour TSP
TMCLKL	HY/2012/08	2013-10-25	ASR5	143	µg/m ³	S	08:44	09:44	1-hour TSP
TMCLKL	HY/2012/08	2013-10-25	ASR5	146	µg/m ³	S	09:44	10:44	1-hour TSP
TMCLKL	HY/2012/08	2013-10-26	ASR5	120	µg/m ³	S	07:45	08:45	1-hour TSP
TMCLKL	HY/2012/08	2013-10-26	ASR5	122	µg/m ³	S	08:45	09:45	1-hour TSP
TMCLKL	HY/2012/08	2013-10-26	ASR5	127	µg/m ³	S	09:45	10:45	1-hour TSP
TMCLKL	HY/2012/08	2013-10-27	ASR5	136	µg/m ³	S	07:45	08:45	1-hour TSP
TMCLKL	HY/2012/08	2013-10-27	ASR5	120	µg/m ³	S	08:45	09:45	1-hour TSP

Project	Works	Date	Station	Results	units	Weather*	Start time	End Time	Parameters
TMCLKL	HY/2012/08	2013-10-27	ASR5	116	µg/m ³	S	09:45	10:45	1-hour TSP
TMCLKL	HY/2012/08	2013-10-28	ASR5	130	µg/m ³	S	07:50	08:50	1-hour TSP
TMCLKL	HY/2012/08	2013-10-28	ASR5	132	µg/m ³	S	08:50	09:50	1-hour TSP
TMCLKL	HY/2012/08	2013-10-28	ASR5	127	µg/m ³	S	09:50	10:50	1-hour TSP
TMCLKL	HY/2012/08	2013-10-29	ASR5	106	µg/m ³	S	07:50	08:50	1-hour TSP
TMCLKL	HY/2012/08	2013-10-29	ASR5	112	µg/m ³	S	08:50	09:50	1-hour TSP
TMCLKL	HY/2012/08	2013-10-29	ASR5	114	µg/m ³	S	09:50	10:50	1-hour TSP
TMCLKL	HY/2012/08	2013-10-30	ASR5	86	µg/m ³	S	07:52	08:52	1-hour TSP
TMCLKL	HY/2012/08	2013-10-30	ASR5	82	µg/m ³	S	08:52	09:52	1-hour TSP
TMCLKL	HY/2012/08	2013-10-30	ASR5	77	µg/m ³	S	09:52	10:52	1-hour TSP

* Note:

S = Sunny/Fine; C = Cloudy/Overcast; R = Rainy

Date	Time (24 hrs)	Average of Wind Direction (degree)	Average of Wind Speed (m/s)	Average Pressure (mbar)	Average Humidity (%)	Average Temperature (°C)
17-Oct-13	17:00	112.8	2.4	1014.4	68.5	25.0
17-Oct-13	18:00	98.6	2.7	1014.8	68.8	24.5
17-Oct-13	19:00	116.4	1.6	1015.3	67.1	24.4
17-Oct-13	20:00	128.9	1.0	1016.0	66.8	24.2
17-Oct-13	21:00	91.6	1.6	1016.2	67.6	24.3
17-Oct-13	22:00	87.0	1.8	1016.1	69.1	24.3
17-Oct-13	23:00	88.5	1.5	1016.1	70.1	24.1
18-Oct-13	0:00	117.3	1.2	1015.9	69.8	23.8
18-Oct-13	1:00	158.4	1.3	1015.7	70.9	23.9
18-Oct-13	2:00	118.0	1.6	1015.5	72.0	23.9
18-Oct-13	3:00	105.5	1.6	1015.4	72.7	23.6
18-Oct-13	4:00	108.2	1.6	1015.2	72.5	23.3
18-Oct-13	5:00	114.0	1.3	1015.6	71.0	23.2
18-Oct-13	6:00	111.4	1.5	1016.2	69.5	23.2
18-Oct-13	7:00	91.9	1.8	1016.7	64.7	23.9
18-Oct-13	8:00	117.0	2.1	1017.2	62.0	24.6
18-Oct-13	9:00	118.1	2.3	1017.3	56.6	25.8
18-Oct-13	10:00	125.9	2.0	1017.1	49.4	27.1
18-Oct-13	11:00	126.9	2.3	1016.4	43.6	28.3
18-Oct-13	12:00	139.0	2.4	1015.5	40.7	29.0
18-Oct-13	13:00	139.4	1.9	1014.6	39.5	29.7
18-Oct-13	14:00	134.9	1.8	1013.8	40.3	29.9
18-Oct-13	15:00	170.1	1.2	1013.7	42.6	29.2
18-Oct-13	16:00	202.4	1.8	1013.7	44.5	28.8
18-Oct-13	17:00	228.6	0.7	1014.2	58.6	27.3
18-Oct-13	18:00	277.8	0.8	1014.5	59.8	25.7
18-Oct-13	19:00	224.3	1.3	1015.3	56.6	25.7
18-Oct-13	20:00	160.4	1.3	1016.0	57.2	25.5
18-Oct-13	21:00	152.0	1.5	1016.4	57.0	25.1
18-Oct-13	22:00	107.3	1.7	1016.4	56.7	24.8
18-Oct-13	23:00	167.4	1.9	1016.3	58.5	24.3
19-Oct-13	0:00	149.5	2.4	1015.8	58.1	24.1
19-Oct-13	1:00	114.6	2.6	1015.2	58.8	23.9
19-Oct-13	2:00	93.6	3.1	1014.7	60.3	23.6
19-Oct-13	3:00	87.2	3.1	1014.4	59.9	23.4
19-Oct-13	4:00	90.0	2.9	1014.4	60.6	23.1
19-Oct-13	5:00	117.5	2.5	1015.0	61.1	22.7
19-Oct-13	6:00	100.2	2.1	1015.6	61.6	22.5
19-Oct-13	7:00	119.5	2.4	1016.4	59.9	22.8
19-Oct-13	8:00	115.8	2.9	1017.0	55.2	24.2
19-Oct-13	9:00	91.2	3.2	1017.1	52.2	25.2
19-Oct-13	10:00	105.3	2.3	1017.0	48.2	26.8
19-Oct-13	11:00	122.4	2.1	1016.3	46.8	27.6
19-Oct-13	12:00	114.0	2.1	1015.2	43.6	28.6
19-Oct-13	13:00	133.3	2.0	1014.2	41.6	29.2
19-Oct-13	14:00	107.1	2.0	1013.4	40.7	29.4
19-Oct-13	15:00	217.2	1.4	1013.1	42.6	29.3
19-Oct-13	16:00	224.8	1.0	1013.1	43.1	29.2
19-Oct-13	17:00	287.5	1.1	1013.3	51.1	27.4
19-Oct-13	18:00	298.7	1.4	1013.7	56.6	26.0
19-Oct-13	19:00	251.9	0.9	1014.4	56.3	25.8
19-Oct-13	20:00	272.6	0.7	1015.0	60.9	24.9
19-Oct-13	21:00	266.5	0.6	1015.2	63.4	24.5

Date	Time (24 hrs)	Average of Wind Direction (degree)	Average of Wind Speed (m/s)	Average Pressure (mbar)	Average Humidity (%)	Average Temperature (°C)
19-Oct-13	22:00	288.9	0.7	1015.1	65.4	23.8
19-Oct-13	23:00	288.0	0.7	1014.7	65.2	23.5
20-Oct-13	0:00	253.5	0.5	1014.3	64.8	23.4
20-Oct-13	1:00	239.4	0.5	1014.0	64.9	23.3
20-Oct-13	2:00	193.4	0.9	1013.7	61.9	23.7
20-Oct-13	3:00	152.4	1.4	1013.5	62.2	23.7
20-Oct-13	4:00	130.0	1.3	1013.7	64.4	23.3
20-Oct-13	5:00	161.7	1.1	1014.2	65.4	22.6
20-Oct-13	6:00	202.4	1.7	1014.8	63.0	22.4
20-Oct-13	7:00	115.5	3.5	1014.8	56.4	23.4
20-Oct-13	8:00	97.8	2.4	1015.1	53.4	24.7
20-Oct-13	9:00	101.9	1.8	1015.3	50.2	26.1
20-Oct-13	10:00	115.9	1.6	1014.9	47.7	27.5
20-Oct-13	11:00	122.2	1.5	1014.1	46.6	28.3
20-Oct-13	12:00	159.6	1.1	1013.1	45.5	29.2
20-Oct-13	13:00	213.7	1.0	1012.1	43.9	30.2
20-Oct-13	14:00	241.2	1.4	1011.2	47.0	29.4
20-Oct-13	15:00	268.6	1.7	1011.0	48.0	28.9
20-Oct-13	16:00	280.6	1.8	1010.9	51.4	28.1
20-Oct-13	17:00	282.8	1.0	1011.1	56.5	27.2
20-Oct-13	18:00	246.7	1.7	1011.7	54.3	26.5
20-Oct-13	19:00	208.8	1.1	1012.0	53.4	26.6
20-Oct-13	20:00	243.4	0.6	1012.7	63.4	25.2
20-Oct-13	21:00	203.2	0.6	1013.1	68.2	25.0
20-Oct-13	22:00	225.6	0.6	1013.0	72.3	24.6
20-Oct-13	23:00	260.1	0.7	1012.9	74.8	24.1
21-Oct-13	0:00	207.9	0.7	1012.6	68.4	24.0
21-Oct-13	1:00	129.8	1.8	1012.2	62.4	24.2
21-Oct-13	2:00	116.5	2.6	1011.9	61.6	23.8
21-Oct-13	3:00	100.7	3.4	1011.7	61.1	23.4
21-Oct-13	4:00	99.1	3.7	1011.5	61.4	23.0
21-Oct-13	5:00	92.8	3.7	1011.9	60.5	22.9
21-Oct-13	6:00	97.1	3.3	1012.5	60.5	23.1
21-Oct-13	7:00	104.9	3.0	1013.3	60.5	23.2
21-Oct-13	8:00	111.9	2.3	1013.8	58.4	24.2
21-Oct-13	9:00	99.1	2.2	1014.1	54.2	25.7
21-Oct-13	10:00	97.8	2.2	1013.9	51.1	26.9
21-Oct-13	11:00	158.6	1.4	1013.1	48.9	28.2
21-Oct-13	12:00	193.8	1.0	1012.1	47.6	29.1
21-Oct-13	13:00	245.9	1.7	1011.3	50.3	28.4
21-Oct-13	14:00	267.7	1.9	1010.8	50.9	28.1
21-Oct-13	15:00	276.8	1.8	1010.7	52.0	28.1
21-Oct-13	16:00	273.8	1.4	1010.7	54.3	27.7
21-Oct-13	17:00	238.8	1.3	1011.0	56.6	27.1
21-Oct-13	18:00	94.7	1.3	1011.5	67.1	26.2
21-Oct-13	18:00	97.8	1.5	1011.9	68.7	26.0
21-Oct-13	19:00	97.6	1.8	1012.4	70.6	25.7
21-Oct-13	20:00	90.9	1.6	1013.2	71.1	25.6
21-Oct-13	21:00	93.8	1.6	1013.5	71.7	25.5
21-Oct-13	22:00	105.8	1.7	1013.3	67.0	25.4
21-Oct-13	23:00	145.4	1.2	1013.2	62.3	25.0
22-Oct-13	0:00	124.8	1.1	1013.1	62.4	24.6
22-Oct-13	1:00	213.1	0.8	1012.9	65.2	23.8

Date	Time (24 hrs)	Average of Wind Direction (degree)	Average of Wind Speed (m/s)	Average Pressure (mbar)	Average Humidity (%)	Average Temperature (°C)
22-Oct-13	2:00	135.5	1.3	1012.6	63.8	23.8
22-Oct-13	3:00	145.4	1.0	1012.3	63.1	23.8
22-Oct-13	4:00	175.1	1.1	1012.5	62.3	23.4
22-Oct-13	5:00	176.0	0.8	1013.2	64.1	23.0
22-Oct-13	6:00	180.5	1.8	1013.8	65.2	22.6
22-Oct-13	7:00	97.9	3.3	1014.3	60.4	23.7
22-Oct-13	8:00	110.1	3.7	1014.7	56.7	24.8
22-Oct-13	9:00	118.6	2.9	1014.9	51.9	26.1
22-Oct-13	10:00	116.1	2.3	1014.6	46.8	27.5
22-Oct-13	11:00	112.0	2.1	1013.7	43.1	28.6
22-Oct-13	12:00	169.1	1.4	1012.8	40.8	29.6
22-Oct-13	13:00	184.3	1.1	1011.9	41.3	29.7
22-Oct-13	14:00	203.0	1.3	1011.0	39.0	30.3
22-Oct-13	15:00	189.0	1.6	1010.8	36.5	30.6
22-Oct-13	16:00	186.1	1.7	1011.0	41.0	29.6
22-Oct-13	17:00	89.8	1.4	1011.2	57.7	27.3
23-Oct-13	18:00	290.2	1.5	1010.0	36.5	24.8
23-Oct-13	19:00	204.9	0.9	1010.8	34.3	25.4
23-Oct-13	20:00	269.4	0.7	1011.3	44.2	23.5
23-Oct-13	21:00	275.1	0.7	1011.5	47.3	22.7
23-Oct-13	22:00	242.7	1.0	1011.6	43.1	23.3
23-Oct-13	23:00	158.1	1.3	1011.5	38.9	23.8
24-Oct-13	0:00	187.2	1.0	1011.0	39.1	23.6
24-Oct-13	1:00	267.8	0.6	1010.7	49.5	21.5
24-Oct-13	2:00	249.7	0.5	1010.5	51.3	21.2
24-Oct-13	3:00	256.8	0.5	1010.4	54.5	20.3
24-Oct-13	4:00	235.9	0.5	1010.4	50.2	20.5
24-Oct-13	5:00	265.2	0.6	1010.9	53.0	19.8
24-Oct-13	6:00	240.9	0.5	1011.7	55.9	19.3
24-Oct-13	7:00	165.1	1.5	1012.2	43.8	21.8
24-Oct-13	8:00	139.5	2.8	1012.5	37.9	23.4
24-Oct-13	9:00	116.5	4.2	1012.4	34.4	24.8
24-Oct-13	10:00	123.6	4.3	1011.8	31.7	25.9
24-Oct-13	11:00	118.5	2.4	1010.9	29.1	27.3
24-Oct-13	12:00	182.7	2.0	1009.9	27.5	28.4
24-Oct-13	13:00	260.7	1.9	1008.8	27.5	28.7
24-Oct-13	14:00	258.6	2.2	1008.1	26.6	28.9
24-Oct-13	15:00	233.4	1.6	1007.8	25.9	29.1
24-Oct-13	16:00	255.0	1.3	1007.9	28.2	28.3
24-Oct-13	17:00	263.7	1.3	1008.5	30.2	26.6
24-Oct-13	18:00	284.6	1.5	1008.8	31.3	25.8
24-Oct-13	19:00	247.6	0.7	1009.5	38.1	23.8
24-Oct-13	20:00	178.9	0.5	1010.0	37.0	24.0
24-Oct-13	21:00	254.2	0.5	1010.3	37.2	23.5
24-Oct-13	22:00	234.2	0.6	1010.7	36.8	23.3
24-Oct-13	23:00	193.7	0.9	1010.9	33.2	23.7
25-Oct-13	0:00	148.4	2.1	1010.9	32.6	23.8
25-Oct-13	1:00	110.2	3.5	1010.8	34.6	23.2
25-Oct-13	2:00	103.4	2.5	1011.2	37.0	22.7
25-Oct-13	3:00	97.0	2.0	1011.4	38.7	22.4
25-Oct-13	4:00	127.6	1.6	1011.4	38.7	22.1
25-Oct-13	5:00	129.5	2.3	1012.0	38.2	22.0
25-Oct-13	6:00	152.3	2.1	1012.7	38.1	22.1

Date	Time (24 hrs)	Average of Wind Direction (degree)	Average of Wind Speed (m/s)	Average Pressure (mbar)	Average Humidity (%)	Average Temperature (°C)
25-Oct-13	7:00	197.8	1.0	1013.4	38.1	22.4
25-Oct-13	8:00	124.6	2.0	1014.1	36.3	23.5
25-Oct-13	9:00	138.8	3.2	1014.3	33.2	24.5
25-Oct-13	10:00	124.9	3.0	1013.9	31.2	25.8
25-Oct-13	11:00	114.6	2.8	1013.2	27.2	26.8
25-Oct-13	12:00	127.6	2.1	1012.4	26.1	27.9
25-Oct-13	13:00	152.9	2.4	1011.6	22.0	28.4
25-Oct-13	14:00	141.6	2.1	1011.0	21.2	28.6
25-Oct-13	15:00	260.9	1.9	1011.0	23.1	28.3
25-Oct-13	16:00	213.7	1.6	1011.4	22.3	27.6
25-Oct-13	17:00	184.0	1.9	1011.6	23.5	26.7
25-Oct-13	18:00	265.7	1.6	1012.3	26.7	24.7
25-Oct-13	19:00	251.9	0.5	1013.0	33.6	22.9
25-Oct-13	20:00	238.3	0.8	1013.7	32.9	22.5
25-Oct-13	21:00	182.7	1.4	1014.0	27.8	23.2
25-Oct-13	22:00	174.2	1.9	1014.0	28.9	22.9
25-Oct-13	23:00	115.7	3.0	1014.0	30.7	22.5
26-Oct-13	0:00	132.8	3.3	1014.0	31.7	21.8
26-Oct-13	1:00	157.5	3.8	1013.8	32.0	21.3
26-Oct-13	2:00	120.3	3.7	1014.0	32.8	20.8
26-Oct-13	3:00	145.8	3.6	1014.2	33.5	20.4
26-Oct-13	4:00	128.8	3.7	1014.0	34.5	19.9
26-Oct-13	5:00	126.1	3.7	1014.4	34.9	19.5
26-Oct-13	6:00	108.5	3.5	1015.5	35.2	19.4
26-Oct-13	7:00	102.1	4.1	1016.2	35.1	19.7
26-Oct-13	8:00	111.2	3.9	1017.0	34.0	20.7
26-Oct-13	9:00	120.8	3.2	1017.8	31.9	22.1
26-Oct-13	10:00	135.6	2.6	1017.4	30.2	23.7
26-Oct-13	11:00	131.1	1.6	1016.6	29.7	25.2
26-Oct-13	12:00	225.2	1.2	1015.6	30.2	26.3
26-Oct-13	13:00	229.5	1.6	1014.7	30.1	26.5
26-Oct-13	14:00	243.6	1.3	1014.1	32.7	26.5
26-Oct-13	15:00	268.5	1.5	1014.0	34.1	25.8
26-Oct-13	16:00	263.5	1.1	1014.2	34.7	25.5
26-Oct-13	17:00	212.2	0.8	1014.5	43.2	24.4
26-Oct-13	18:00	177.1	0.9	1014.5	49.1	23.7
26-Oct-13	18:00	193.0	1.0	1014.6	51.7	23.4
26-Oct-13	19:00	148.2	1.1	1015.2	53.8	22.7
26-Oct-13	20:00	248.6	0.7	1015.6	55.9	21.2
26-Oct-13	21:00	139.8	1.0	1016.0	53.2	21.3
26-Oct-13	22:00	121.6	1.2	1015.9	55.7	21.5
26-Oct-13	23:00	112.5	0.8	1016.1	59.8	21.0
27-Oct-13	0:00	144.6	0.9	1015.6	60.9	20.6
27-Oct-13	1:00	268.8	0.6	1015.5	64.3	19.7
27-Oct-13	2:00	159.4	0.7	1015.4	61.9	20.3
27-Oct-13	3:00	140.0	1.0	1015.2	63.8	20.2
27-Oct-13	4:00	132.0	1.2	1015.0	67.0	20.0
27-Oct-13	5:00	98.1	1.0	1015.5	68.6	19.9
27-Oct-13	6:00	138.5	1.2	1015.9	71.3	19.6
27-Oct-13	7:00	109.9	1.4	1016.4	65.5	20.9
27-Oct-13	8:00	102.5	1.8	1017.1	62.6	21.9
27-Oct-13	9:00	125.3	1.5	1017.6	56.2	23.2
27-Oct-13	10:00	144.6	1.6	1017.4	51.6	24.3

Date	Time (24 hrs)	Average of Wind Direction (degree)	Average of Wind Speed (m/s)	Average Pressure (mbar)	Average Humidity (%)	Average Temperature (°C)
27-Oct-13	11:00	154.1	1.3	1016.7	50.2	25.2
27-Oct-13	12:00	154.3	1.4	1016.0	49.8	25.8
27-Oct-13	13:00	143.7	1.7	1014.9	48.0	25.9
27-Oct-13	14:00	155.8	1.7	1014.2	46.8	26.0
27-Oct-13	15:00	149.9	2.2	1014.0	54.5	24.3
27-Oct-13	16:00	137.5	2.5	1014.2	51.0	24.1
27-Oct-13	17:00	122.9	2.4	1014.2	50.6	23.5
27-Oct-13	18:00	106.9	1.7	1014.2	50.8	23.2
27-Oct-13	19:00	174.4	0.7	1015.5	52.9	21.9
27-Oct-13	20:00	155.1	0.9	1016.1	60.0	21.6
27-Oct-13	21:00	129.4	0.9	1016.3	63.3	21.5
27-Oct-13	22:00	103.3	1.4	1016.4	64.2	21.8
27-Oct-13	23:00	87.2	1.7	1016.3	65.3	21.9
28-Oct-13	0:00	98.1	1.9	1015.7	65.4	21.9
28-Oct-13	1:00	88.8	1.8	1015.4	66.3	21.6
28-Oct-13	2:00	91.9	1.9	1015.0	70.1	21.2
28-Oct-13	3:00	89.6	1.6	1014.7	71.5	20.9
28-Oct-13	4:00	109.0	1.1	1015.0	72.7	20.6
28-Oct-13	5:00	117.1	0.9	1015.5	73.4	20.1
28-Oct-13	6:00	102.7	1.0	1016.4	72.0	20.4
28-Oct-13	7:00	84.5	1.6	1017.1	66.6	21.7
28-Oct-13	8:00	100.5	2.5	1017.4	61.9	23.0
28-Oct-13	9:00	115.7	2.7	1017.5	59.9	23.9
28-Oct-13	10:00	130.3	1.8	1017.3	53.7	25.3
28-Oct-13	11:00	127.5	1.8	1016.3	49.6	26.1
28-Oct-13	12:00	134.7	2.0	1015.4	48.4	26.5
28-Oct-13	13:00	129.3	2.1	1014.9	45.1	26.7
28-Oct-13	14:00	122.4	2.0	1014.4	43.0	26.7
28-Oct-13	15:00	118.4	2.1	1014.1	47.3	26.0
28-Oct-13	16:00	115.8	2.0	1014.3	52.2	25.2
28-Oct-13	17:00	120.6	2.0	1014.6	59.0	24.4
28-Oct-13	18:00	113.8	2.4	1014.7	62.0	23.9
28-Oct-13	19:00	89.0	1.8	1015.5	61.8	23.5
28-Oct-13	20:00	86.0	1.5	1016.1	62.7	23.3
28-Oct-13	21:00	90.2	1.4	1016.3	63.3	23.0
28-Oct-13	22:00	93.6	1.2	1016.4	66.0	22.7
28-Oct-13	23:00	99.4	1.1	1016.2	71.0	22.5
29-Oct-13	0:00	111.1	0.9	1015.9	73.6	22.3
29-Oct-13	1:00	98.6	1.1	1015.4	73.9	22.3
29-Oct-13	2:00	105.7	1.2	1015.1	73.3	22.2
29-Oct-13	3:00	83.8	1.2	1014.8	73.1	22.2
29-Oct-13	4:00	87.0	1.3	1014.9	73.5	22.2
29-Oct-13	5:00	92.8	1.4	1015.6	74.2	22.0
29-Oct-13	6:00	92.6	1.6	1016.3	73.1	22.2
29-Oct-13	7:00	81.8	1.7	1017.0	71.2	22.7
29-Oct-13	8:00	91.3	1.6	1017.8	67.9	23.5
29-Oct-13	9:00	109.2	2.0	1018.1	63.3	24.7
29-Oct-13	10:00	134.8	1.6	1017.6	57.9	25.9
29-Oct-13	11:00	136.3	1.5	1016.9	57.2	26.0
29-Oct-13	12:00	168.3	1.5	1016.0	56.4	26.4
29-Oct-13	13:00	138.7	1.6	1015.3	50.8	27.5
29-Oct-13	14:00	147.2	1.3	1014.4	49.1	27.5
29-Oct-13	15:00	169.8	1.1	1014.0	48.9	27.5

Date	Time (24 hrs)	Average of Wind Direction (degree)	Average of Wind Speed (m/s)	Average Pressure (mbar)	Average Humidity (%)	Average Temperature (°C)
29-Oct-13	16:00	231.9	1.2	1014.0	61.1	26.0
29-Oct-13	17:00	230.3	0.9	1014.3	63.3	25.3
29-Oct-13	18:00	133.1	1.6	1014.6	63.2	24.4
29-Oct-13	19:00	110.2	1.9	1015.0	61.6	24.3
29-Oct-13	20:00	93.7	1.1	1015.4	61.2	24.4
29-Oct-13	21:00	98.3	1.7	1015.7	62.8	24.2
29-Oct-13	22:00	82.7	1.4	1015.8	64.0	23.9
29-Oct-13	23:00	94.4	1.2	1015.6	65.4	23.7
30-Oct-13	0:00	169.4	0.8	1015.2	67.8	23.2
30-Oct-13	1:00	126.5	0.8	1015.0	68.6	23.4
30-Oct-13	2:00	92.9	1.2	1014.3	70.4	23.4
30-Oct-13	3:00	89.7	1.2	1014.0	71.7	23.1
30-Oct-13	4:00	93.1	1.4	1013.8	72.0	23.1
30-Oct-13	5:00	90.1	1.4	1014.2	72.4	23.2
30-Oct-13	6:00	83.6	1.4	1014.5	72.5	23.2
30-Oct-13	7:00	94.4	1.9	1015.0	69.4	24.0
30-Oct-13	8:00	85.7	2.0	1015.7	62.6	24.7
30-Oct-13	9:00	108.2	1.9	1016.1	57.3	26.1
30-Oct-13	10:00	159.0	1.5	1015.7	56.5	26.5
30-Oct-13	11:00	143.6	1.5	1015.0	52.0	27.8
30-Oct-13	12:00	173.6	1.6	1014.0	51.0	28.1
30-Oct-13	13:00	129.2	2.1	1013.1	53.5	27.5
30-Oct-13	14:00	132.9	2.2	1012.5	55.8	27.2
30-Oct-13	15:00	154.0	2.0	1012.3	56.1	26.8
30-Oct-13	16:00	136.6	1.8	1012.5	60.6	25.9
30-Oct-13	17:00	138.7	1.7	1012.7	62.7	25.5
30-Oct-13	18:00	149.8	1.5	1012.8	62.9	25.2
30-Oct-13	19:00	118.7	1.8	1013.7	64.8	24.7
30-Oct-13	20:00	115.4	0.9	1014.5	61.2	24.3
30-Oct-13	21:00	119.7	0.8	1014.9	61.8	23.9
30-Oct-13	22:00	116.6	0.8	1015.2	62.4	23.8
30-Oct-13	23:00	90.3	1.2	1015.1	65.6	23.8
31-Oct-13	0:00	105.3	1.2	1015.0	69.4	23.9
31-Oct-13	1:00	105.2	1.2	1014.4	71.4	23.8
31-Oct-13	2:00	121.1	1.1	1014.0	74.0	23.5
31-Oct-13	3:00	87.1	1.3	1013.8	73.3	23.6
31-Oct-13	4:00	186.4	0.5	1013.8	76.5	22.5
31-Oct-13	5:00	202.3	0.4	1014.1	78.6	22.0
31-Oct-13	6:00	114.0	1.1	1014.8	77.8	22.6
31-Oct-13	7:00	93.5	1.7	1015.6	73.5	23.7
31-Oct-13	8:00	112.3	1.8	1016.2	66.3	25.1
31-Oct-13	9:00	187.0	1.0	1016.2	61.3	26.5
31-Oct-13	10:00	226.4	1.1	1015.6	59.0	27.1
31-Oct-13	11:00	234.7	1.5	1014.6	56.6	27.8
31-Oct-13	12:00	241.8	1.3	1013.4	51.5	29.0
31-Oct-13	13:00	233.2	1.1	1012.2	50.9	29.7
31-Oct-13	14:00	243.4	1.9	1011.6	59.3	27.9
31-Oct-13	15:00	242.9	1.2	1011.4	58.3	27.8
31-Oct-13	16:00	234.4	0.9	1011.5	58.4	27.6
31-Oct-13	17:00	134.7	1.5	1012.0	65.4	26.2
31-Oct-13	18:00	113.8	1.8	1012.3	67.9	25.6
31-Oct-13	19:00	110.0	2.2	1013.2	67.8	25.1
31-Oct-13	20:00	109.6	2.4	1013.8	69.5	25.0

Date	Time (24 hrs)	Average of Wind Direction (degree)	Average of Wind Speed (m/s)	Average Pressure (mbar)	Average Humidity (%)	Average Temperature (°C)
31-Oct-13	21:00	89.9	1.5	1014.1	69.2	24.6
31-Oct-13	22:00	83.8	1.3	1014.1	70.3	24.3
31-Oct-13	23:00	81.6	1.3	1013.7	73.0	24.0
01-Nov-13	0:00	93.9	1.3	1013.5	74.4	23.8
01-Nov-13	1:00	121.5	0.8	1012.9	75.1	23.5
01-Nov-13	2:00	153.4	0.5	1012.5	75.7	22.9
01-Nov-13	3:00	246.0	0.6	1012.1	75.4	22.3
01-Nov-13	4:00	186.1	0.4	1011.9	78.1	21.9
01-Nov-13	5:00	271.2	0.9	1012.2	79.3	21.8
01-Nov-13	6:00	299.2	1.2	1012.6	80.9	22.1
01-Nov-13	7:00	262.9	0.7	1013.2	75.1	23.7
01-Nov-13	8:00	144.6	0.9	1013.8	68.0	25.2
01-Nov-13	9:00	127.4	2.1	1014.0	56.0	26.6
01-Nov-13	10:00	106.8	2.4	1013.4	46.5	28.1
01-Nov-13	11:00	143.0	2.1	1012.4	42.2	29.5
01-Nov-13	12:00	127.1	2.4	1011.3	37.7	30.2
01-Nov-13	13:00	135.6	2.3	1010.1	34.7	31.0
01-Nov-13	14:00	165.4	1.4	1009.3	36.7	31.2
01-Nov-13	15:00	269.3	1.2	1008.8	39.6	31.0
01-Nov-13	16:00	278.3	1.1	1008.5	40.7	30.4
01-Nov-13	17:00	184.4	1.3	1008.9	52.4	28.2
01-Nov-13	18:00	64.2	1.5	1009.1	59.9	26.9

*Note: electricity failure between 22 October 2013 17:00 to 23 October 2013 18:00