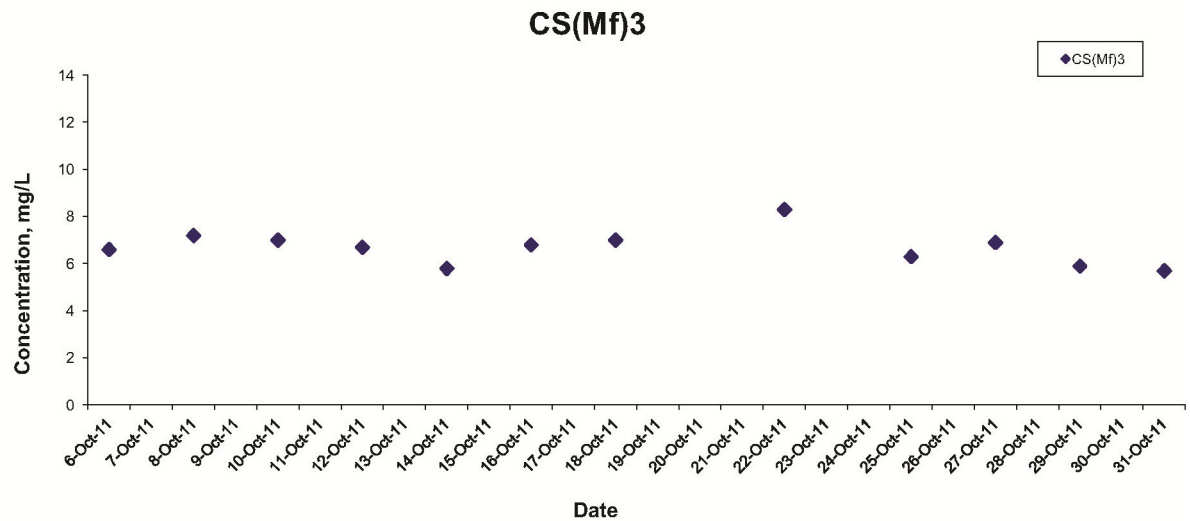


## Dissolved Oxygen (Surface & Middle) at Mid-Ebb Tide



Sources : Agreement No. CE 35/2011 (EP) Baseline Environmental Monitoring For Hong Kong-Zhuhai-Macao Bridge Hong Kong Projects - Investigation

Annex C4

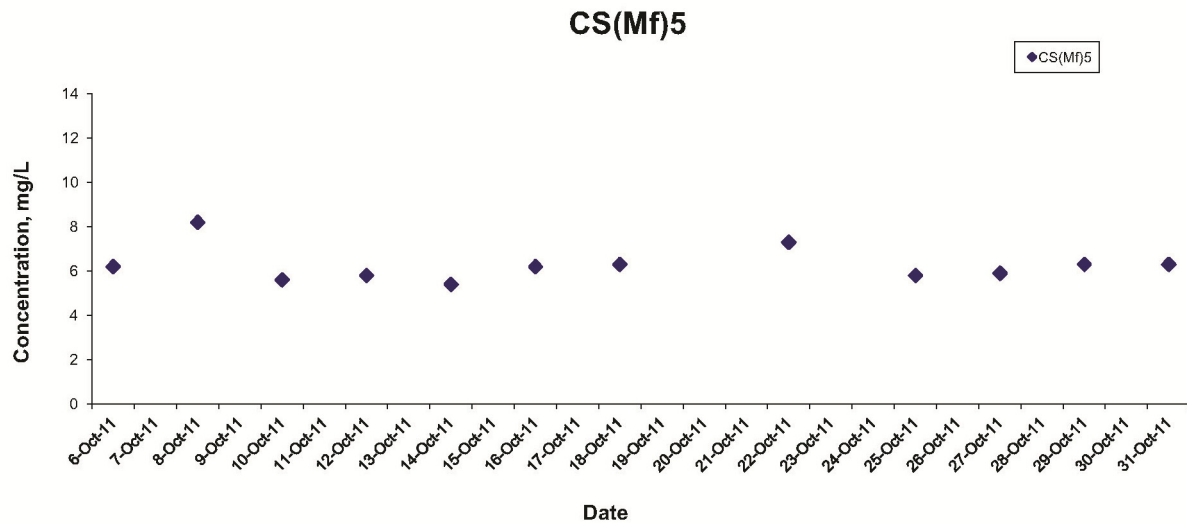
Graphical Presentation of Baseline Water Quality  
Monitoring Results

FILE: Q:\0215660-C4a  
DATE: 02/10/2013

Environmental  
Resources  
Management



## Dissolved Oxygen (Surface & Middle) at Mid-Ebb Tide



Sources : Agreement No. CE 35/2011 (EP) Baseline Environmental Monitoring For Hong Kong-Zhuhai-Macao Bridge Hong Kong Projects - Investigation

Annex C4

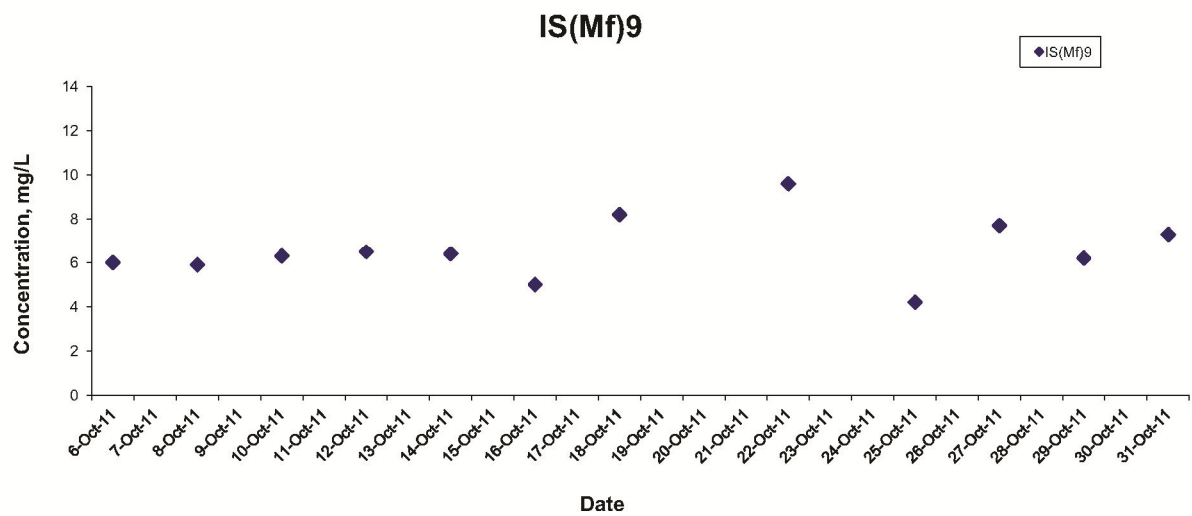
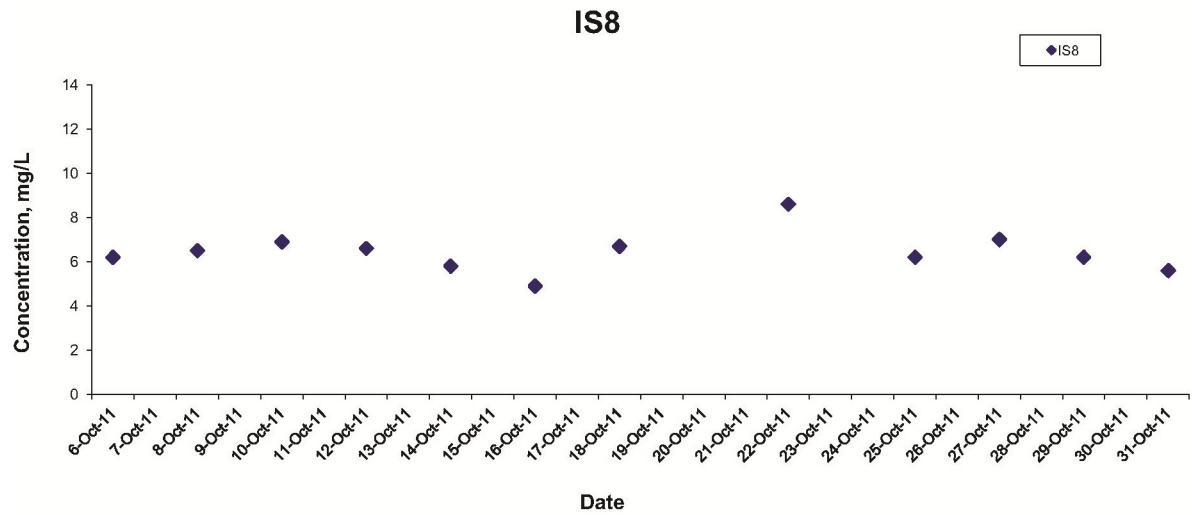
Graphical Presentation of Baseline Water Quality  
Monitoring Results

FILE: Q:\0215660-C4a  
DATE: 02/10/2013

Environmental  
Resources  
Management



## Dissolved Oxygen (Surface & Middle) at Mid-Ebb Tide



Sources : Agreement No. CE 35/2011 (EP) Baseline Environmental Monitoring For Hong Kong-Zhuhai-Macao Bridge Hong Kong Projects - Investigation

Annex C4

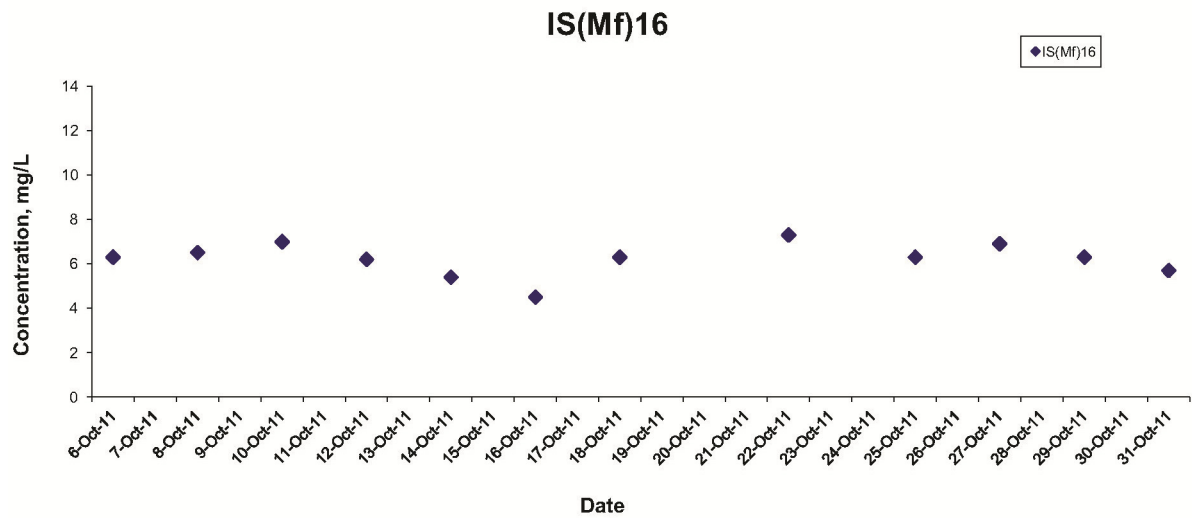
Graphical Presentation of Baseline Water Quality  
Monitoring Results

Environmental  
Resources  
Management



FILE: Q:\0215660-C4a  
DATE: 02/10/2013

## Dissolved Oxygen (Surface & Middle) at Mid-Ebb Tide



Sources : Agreement No. CE 35/2011 (EP) Baseline Environmental Monitoring For Hong Kong-Zhuhai-Macao Bridge Hong Kong Projects - Investigation

Annex C4

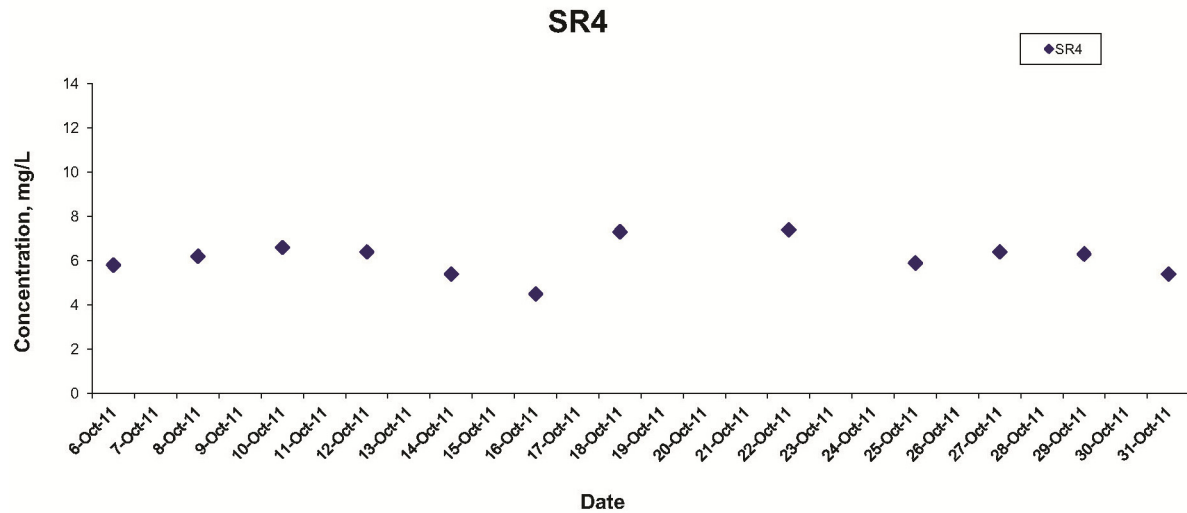
Graphical Presentation of Baseline Water Quality  
Monitoring Results

FILE: Q:\0215660-C4a  
DATE: 02/10/2013

Environmental  
Resources  
Management



## Dissolved Oxygen (Surface & Middle) at Mid-Ebb Tide



Sources : Agreement No. CE 35/2011 (EP) Baseline Environmental Monitoring For Hong Kong-Zhuhai-Macao Bridge Hong Kong Projects - Investigation

Annex C4

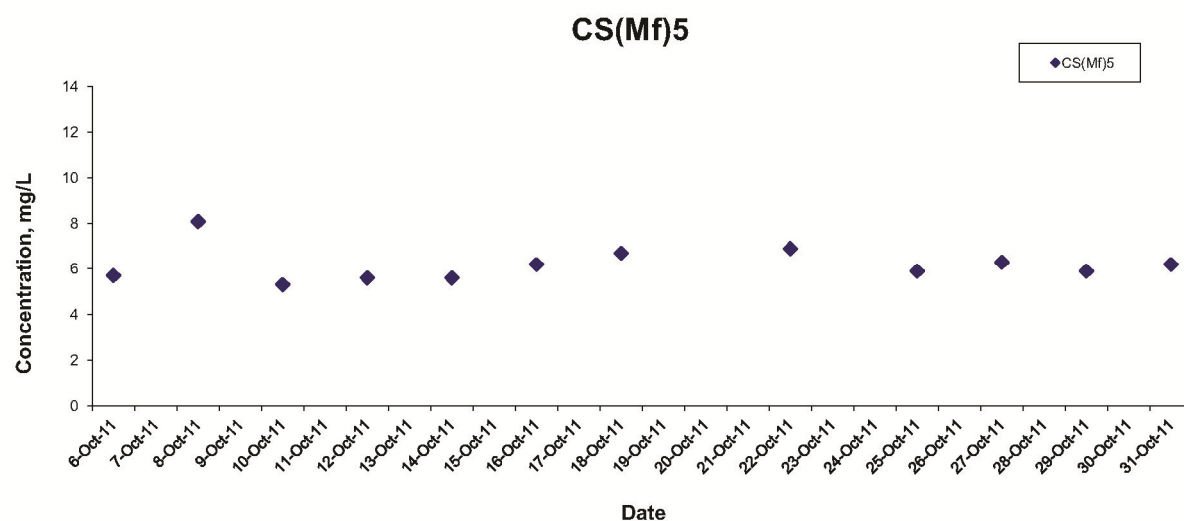
Graphical Presentation of Baseline Water Quality  
Monitoring Results

FILE: Q:\0215660-C4a  
DATE: 02/10/2013

Environmental  
Resources  
Management



## Dissolved Oxygen (Surface & Middle) at Mid-Flood Tide



Sources : Agreement No. CE 35/2011 (EP) Baseline Environmental Monitoring For Hong Kong-Zhuhai-Macao Bridge Hong Kong Projects - Investigation

Annex C4

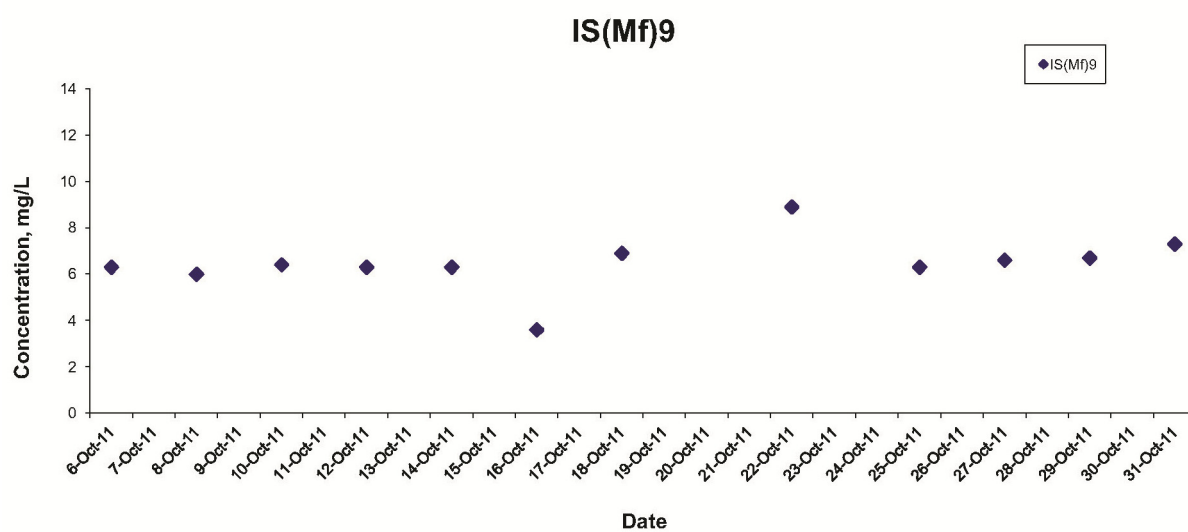
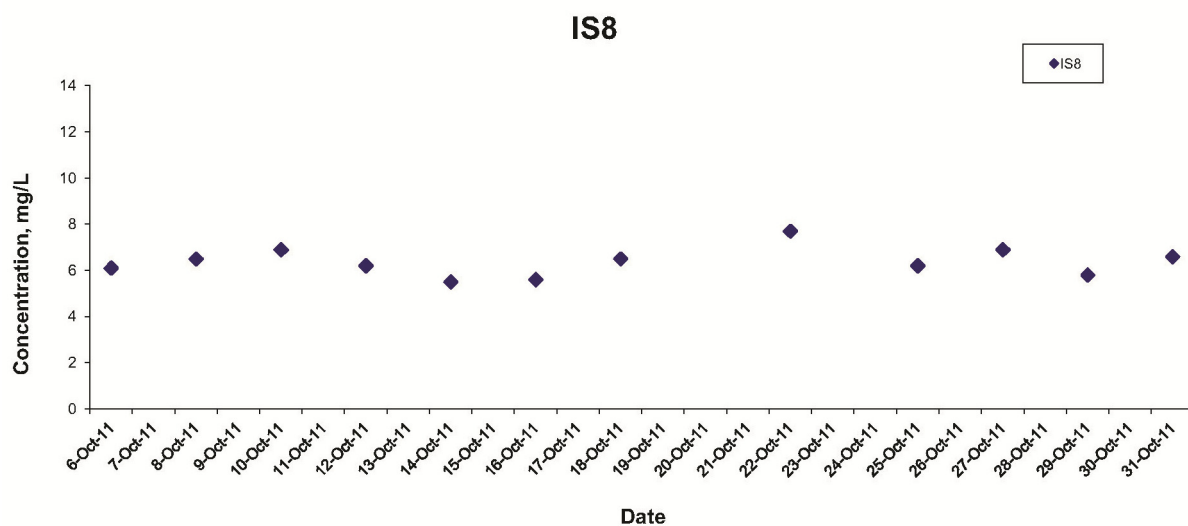
Graphical Presentation of Baseline Water Quality  
Monitoring Results

Environmental  
Resources  
Management



FILE: Q:\0215660-C4b  
DATE: 02/10/2013

## Dissolved Oxygen (Surface & Middle) at Mid-Flood Tide



Sources : Agreement No. CE 35/2011 (EP) Baseline Environmental Monitoring For Hong Kong-Zhuhai-Macao Bridge Hong Kong Projects - Investigation

Annex C4

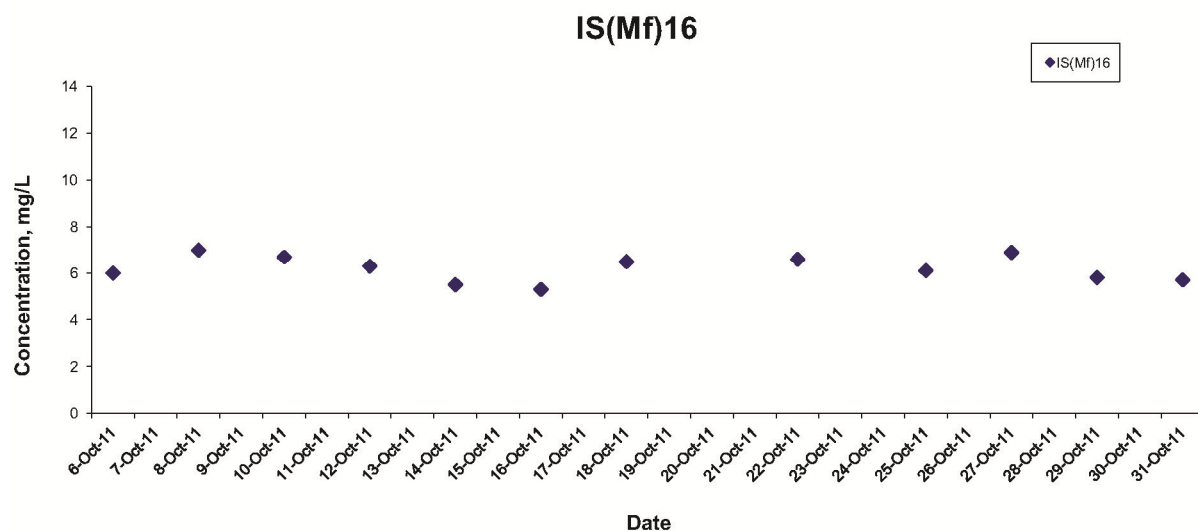
Graphical Presentation of Baseline Water Quality  
Monitoring Results

Environmental  
Resources  
Management



FILE: Q:\0215660-C4b  
DATE: 02/10/2013

## Dissolved Oxygen (Surface & Middle) at Mid-Flood Tide



Sources : Agreement No. CE 35/2011 (EP) Baseline Environmental Monitoring For Hong Kong-Zhuhai-Macao Bridge Hong Kong Projects - Investigation

Annex C4

Graphical Presentation of Baseline Water Quality  
Monitoring Results

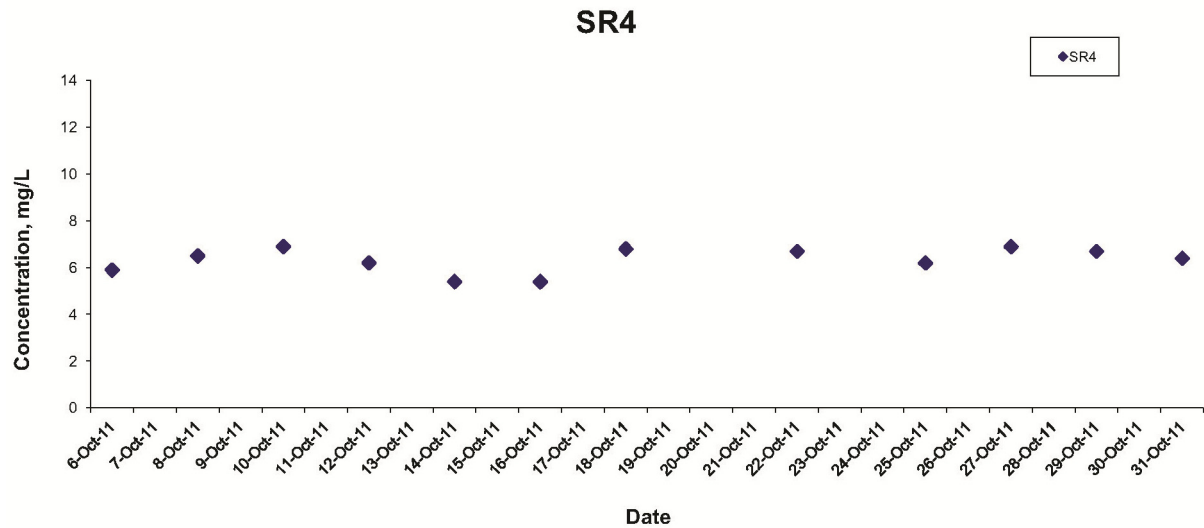
Environmental  
Resources  
Management



FILE: Q:\0215660-C4c  
DATE: 02/10/2013



## Dissolved Oxygen (Surface & Middle) at Mid-Flood Tide



Sources : Agreement No. CE 35/2011 (EP) Baseline Environmental Monitoring For Hong Kong-Zhuhai-Macao Bridge Hong Kong Projects - Investigation

Annex C4

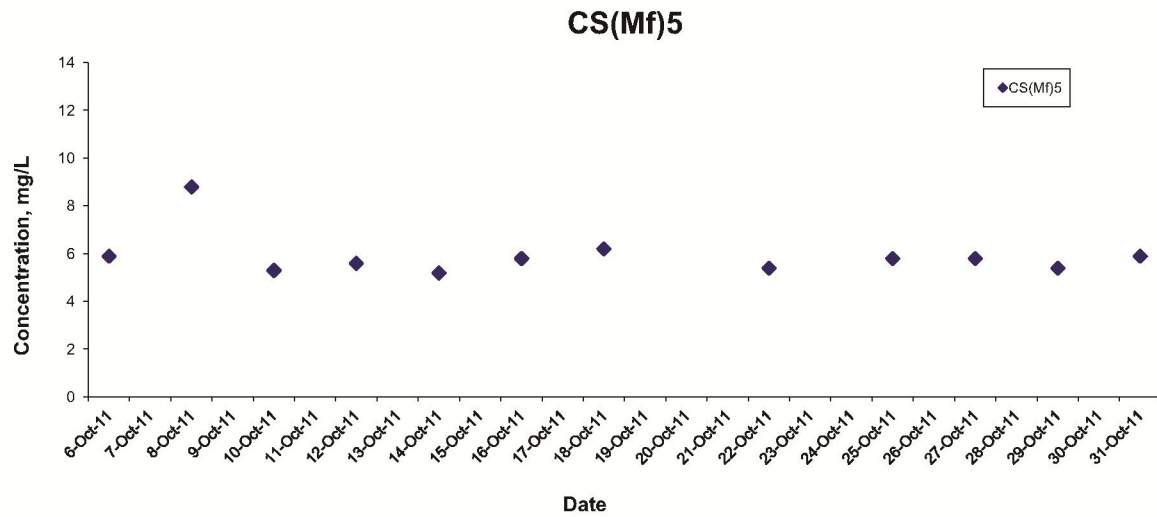
Graphical Presentation of Baseline Water Quality  
Monitoring Results

FILE: Q:\0215660-C4c  
DATE: 02/10/2013

Environmental  
Resources  
Management



## Dissolved Oxygen (Bottom) at Mid-Ebb Tide



Sources : Agreement No. CE 35/2011 (EP) Baseline Environmental Monitoring For Hong Kong-Zhuhai-Macao Bridge Hong Kong Projects - Investigation

Annex C4

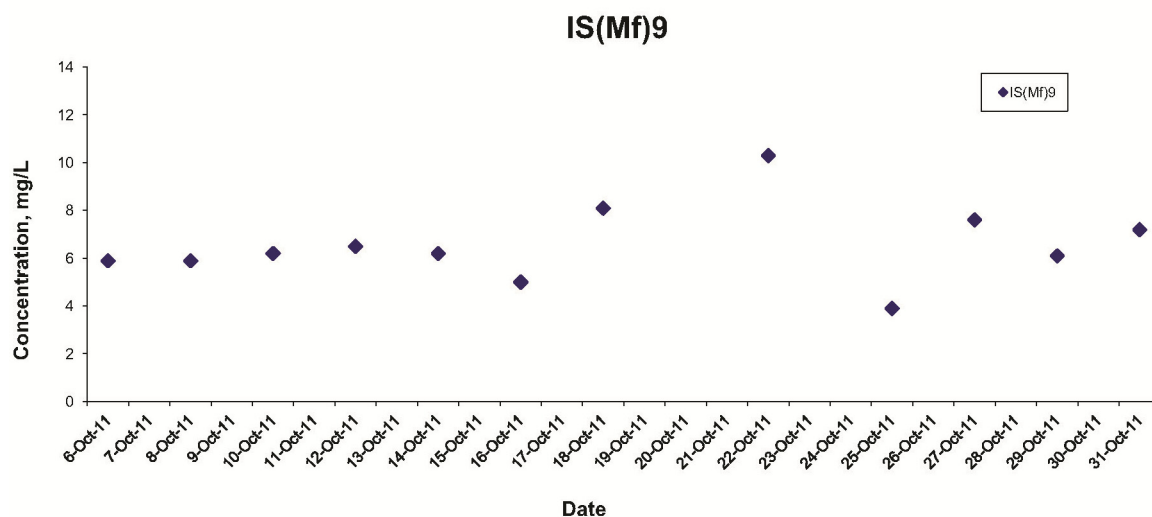
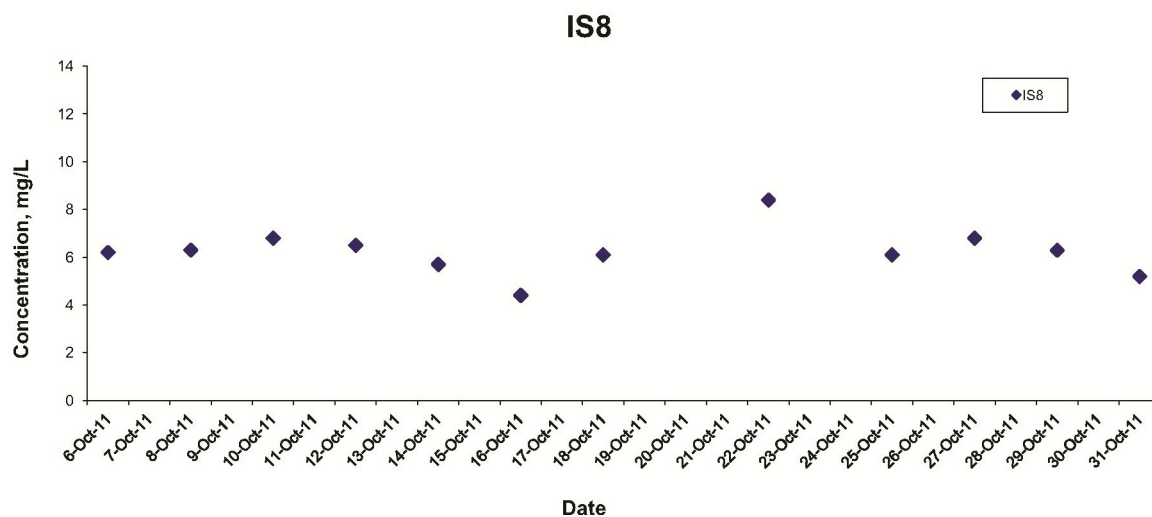
Graphical Presentation of Baseline Water Quality  
Monitoring Results

Environmental  
Resources  
Management



FILE: Q:\0215660-C4c  
DATE: 02/10/2013

## Dissolved Oxygen (Bottom) at Mid-Ebb Tide



Sources : Agreement No. CE 35/2011 (EP) Baseline Environmental Monitoring For Hong Kong-Zhuhai-Macao Bridge Hong Kong Projects - Investigation

Annex C4

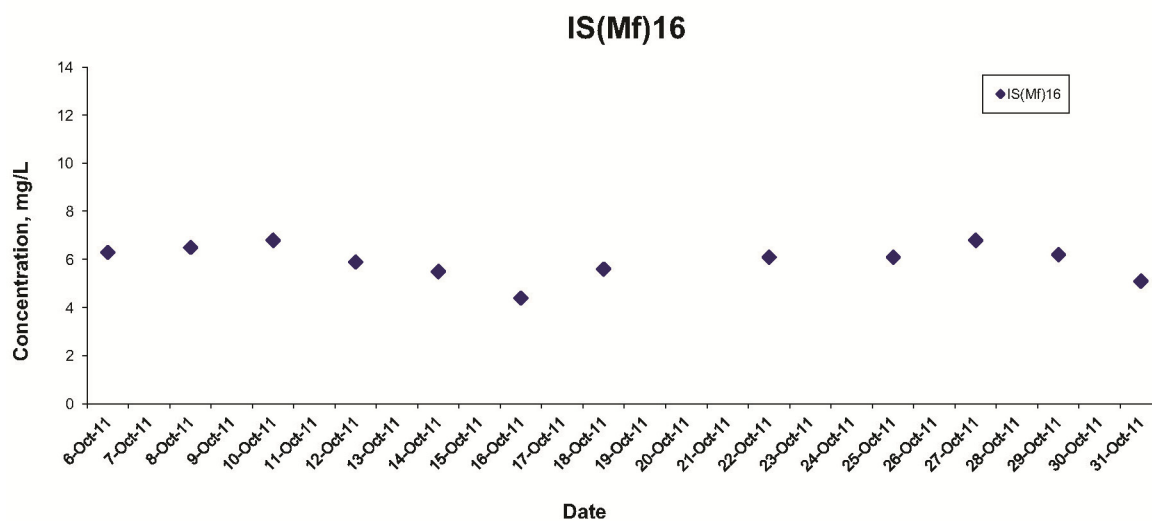
Graphical Presentation of Baseline Water Quality  
Monitoring Results

Environmental  
Resources  
Management



FILE: Q:\0215660-C4d  
DATE: 02/10/2013

## Dissolved Oxygen (Bottom) at Mid-Ebb Tide



Sources : Agreement No. CE 35/2011 (EP) Baseline Environmental Monitoring For Hong Kong-Zhuhai-Macao Bridge Hong Kong Projects - Investigation

Annex C4

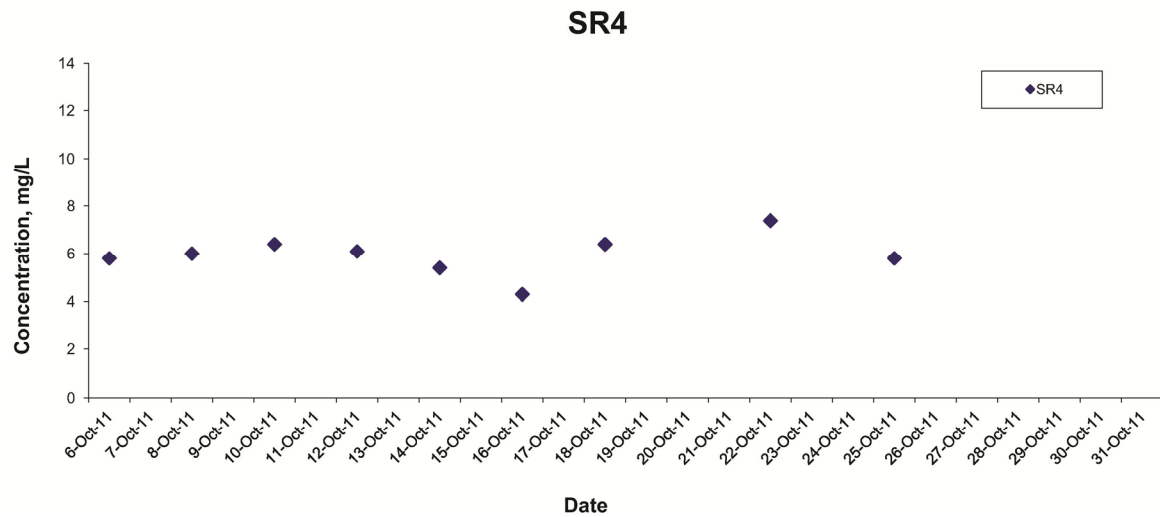
Graphical Presentation of Baseline Water Quality  
Monitoring Results

Environmental  
Resources  
Management



FILE: Q:\0215660-C4d  
DATE: 02/10/2013

## Dissolved Oxygen (Bottom) at Mid-Ebb Tide



Sources : Agreement No. CE 35/2011 (EP) Baseline Environmental Monitoring For Hong Kong-Zhuhai-Macao Bridge Hong Kong Projects - Investigation

Annex C4

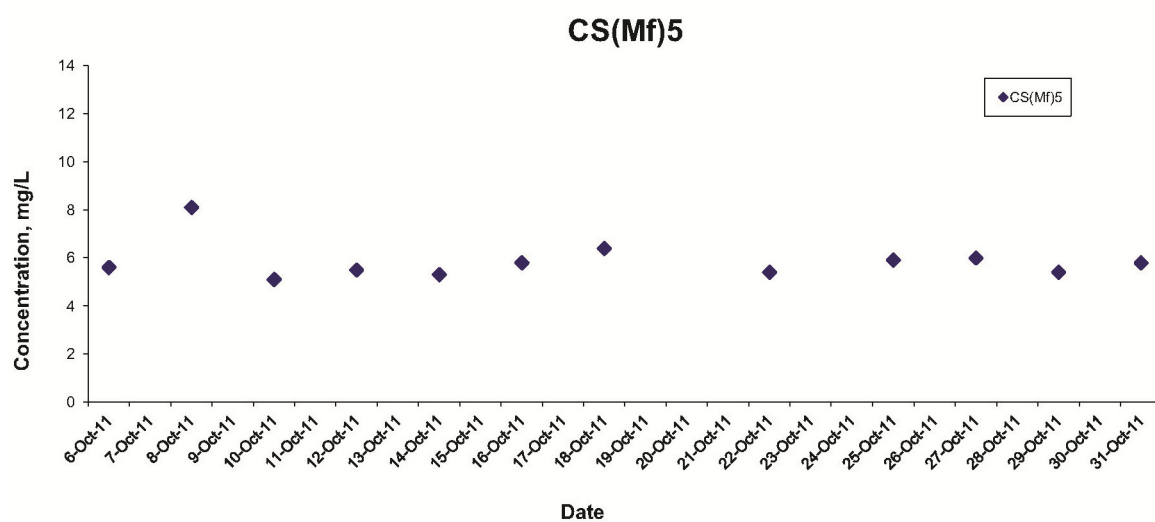
Graphical Presentation of Baseline Water Quality  
Monitoring Results

Environmental  
Resources  
Management



FILE: Q:\0215660-C4d  
DATE: 02/10/2013

## Dissolved Oxygen (Bottom) at Mid-Flood Tide



Sources : Agreement No. CE 35/2011 (EP) Baseline Environmental Monitoring For Hong Kong-Zhuhai-Macao Bridge Hong Kong Projects - Investigation

Annex C4

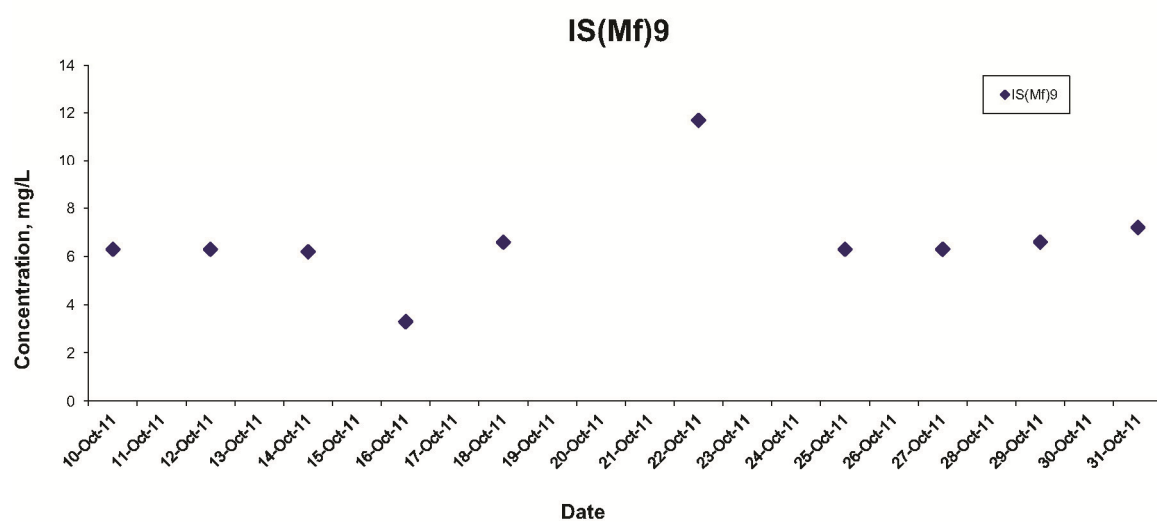
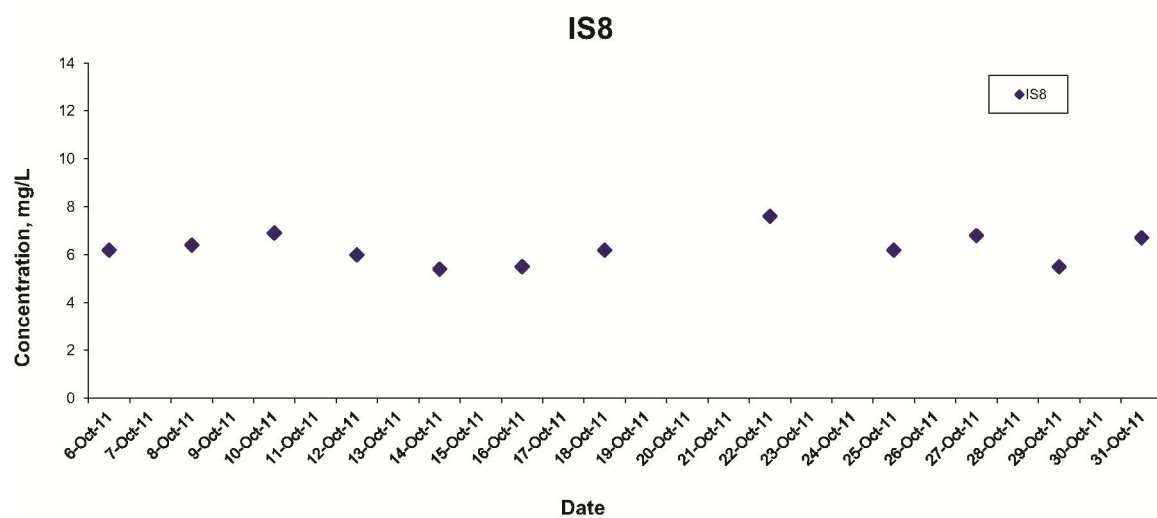
Graphical Presentation of Baseline Water Quality  
Monitoring Results

Environmental  
Resources  
Management



FILE: Q:\0215660-C4e  
DATE: 02/10/2013

## Dissolved Oxygen (Bottom) at Mid-Flood Tide



Sources : Agreement No. CE 35/2011 (EP) Baseline Environmental Monitoring For Hong Kong-Zhuhai-Macao Bridge Hong Kong Projects - Investigation

Annex C4

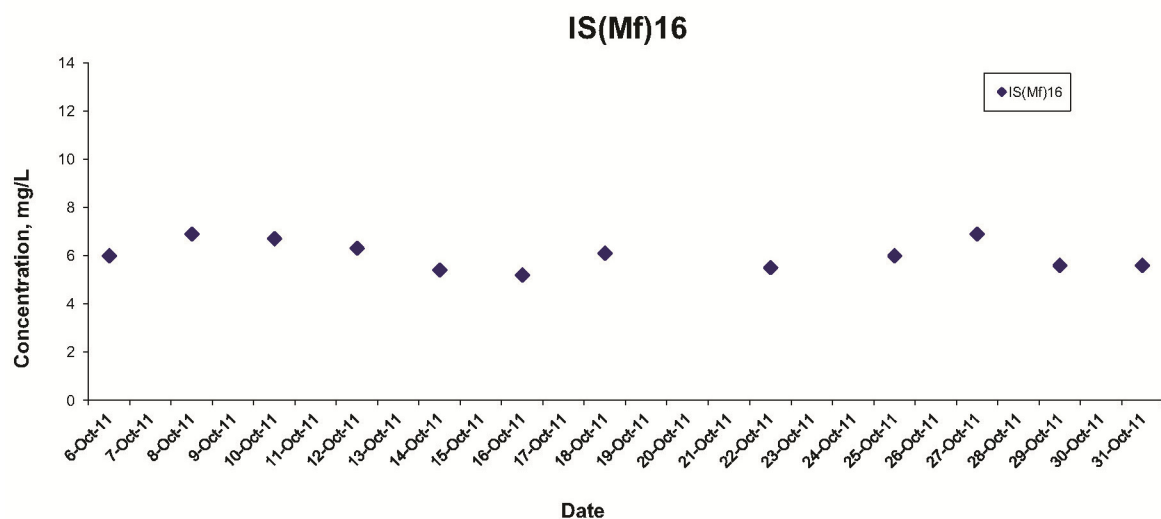
Graphical Presentation of Baseline Water Quality  
Monitoring Results

Environmental  
Resources  
Management



FILE: Q:\0215660-C4e  
DATE: 02/10/2013

## Dissolved Oxygen (Bottom) at Mid-Flood Tide



Sources : Agreement No. CE 35/2011 (EP) Baseline Environmental Monitoring For Hong Kong-Zhuhai-Macao Bridge Hong Kong Projects - Investigation

Annex C4

Graphical Presentation of Baseline Water Quality  
Monitoring Results

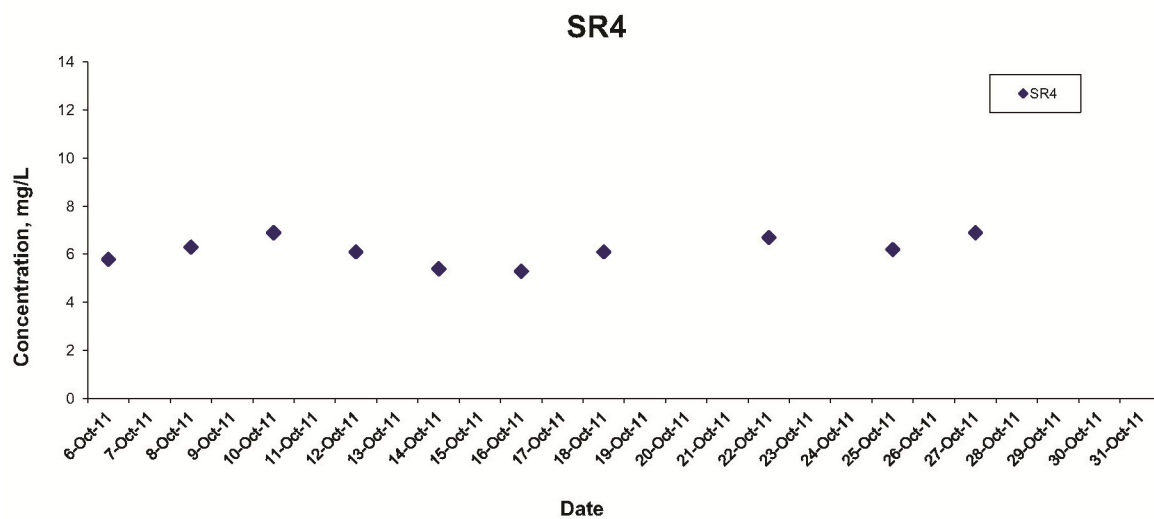
Environmental  
Resources  
Management



FILE: Q:\0215660-C4e  
DATE: 02/10/2013



## Dissolved Oxygen (Bottom) at Mid-Flood Tide



Sources : Agreement No. CE 35/2011 (EP) Baseline Environmental Monitoring For Hong Kong-Zhuhai-Macao Bridge Hong Kong Projects - Investigation

Annex C4

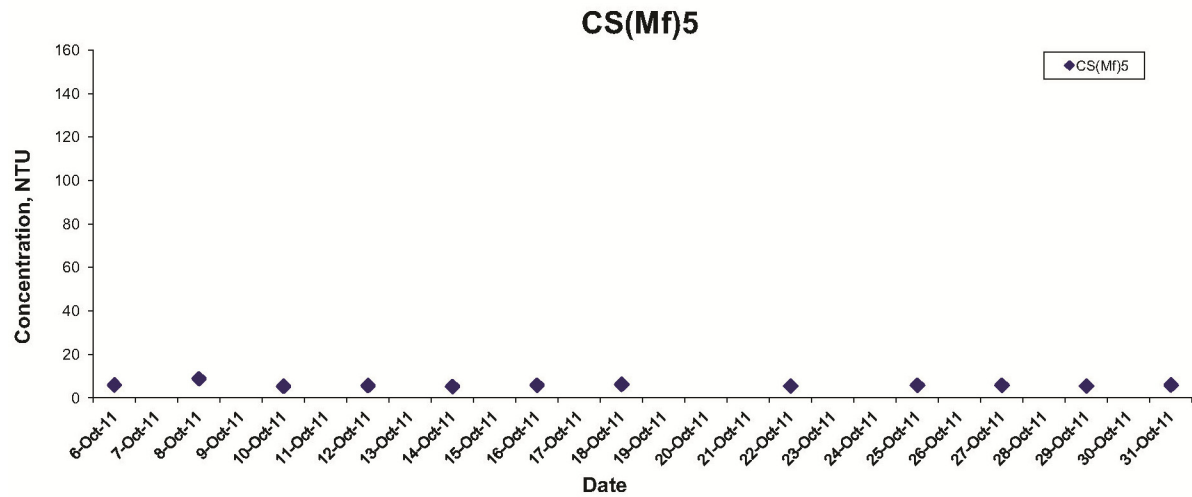
Graphical Presentation of Baseline Water Quality  
Monitoring Results

FILE: Q:\0215660-C4f  
DATE: 02/10/2013

Environmental  
Resources  
Management



## Turbidity (Depth-averaged) at Mid-Ebb Tide



Sources : Agreement No. CE 35/2011 (EP) Baseline Environmental Monitoring For Hong Kong-Zhuhai-Macao Bridge Hong Kong Projects - Investigation

Annex C4

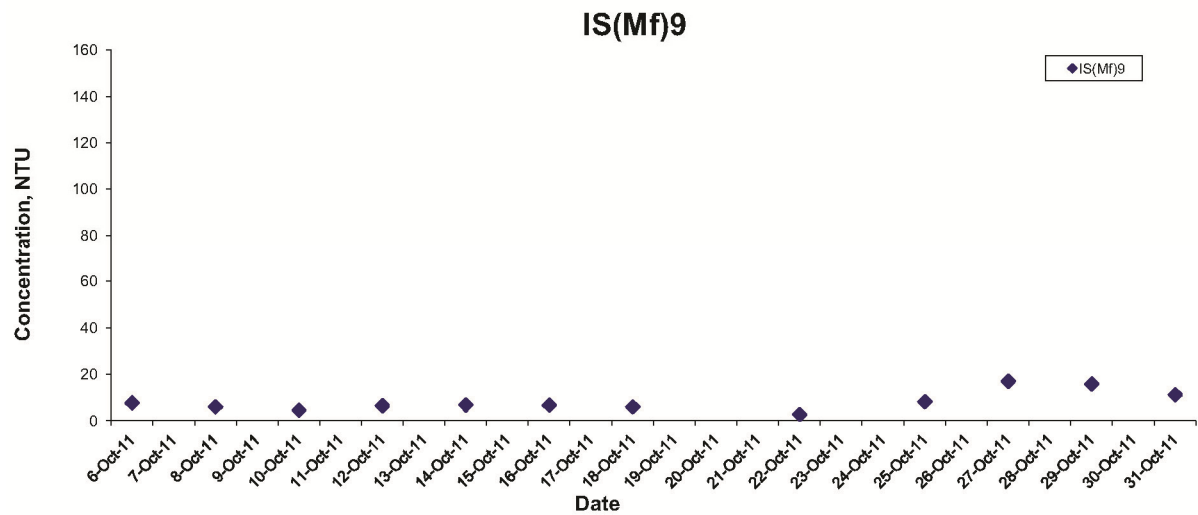
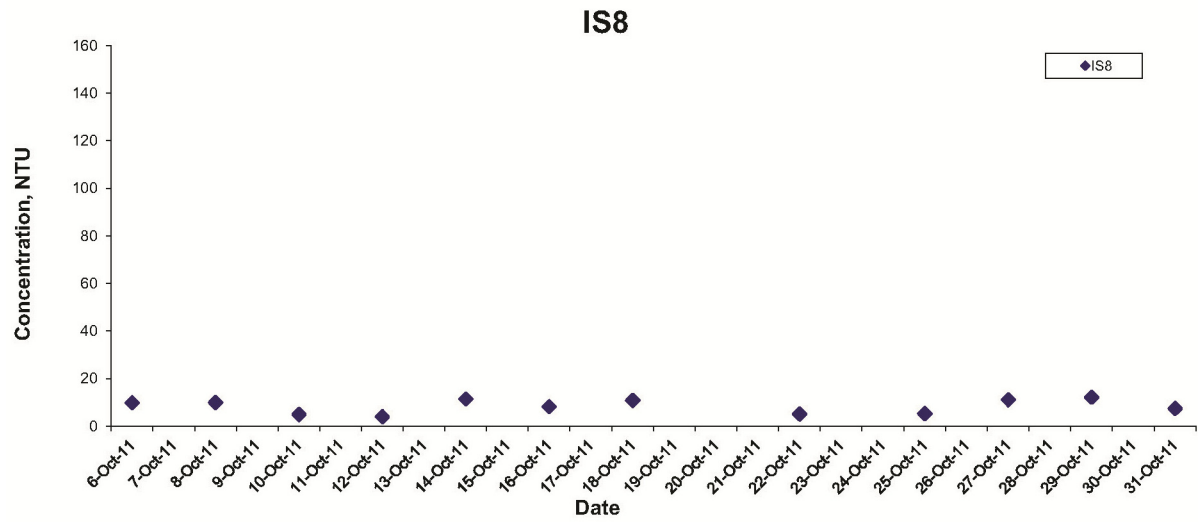
Graphical Presentation of Baseline Water Quality  
Monitoring Results

FILE: Q:\0215660-C4f  
DATE: 02/10/2013

**Environmental  
Resources  
Management**



## Turbidity (Depth-averaged) at Mid-Ebb Tide



Sources : Agreement No. CE 35/2011 (EP) Baseline Environmental Monitoring For Hong Kong-Zhuhai-Macao Bridge Hong Kong Projects - Investigation

Annex C4

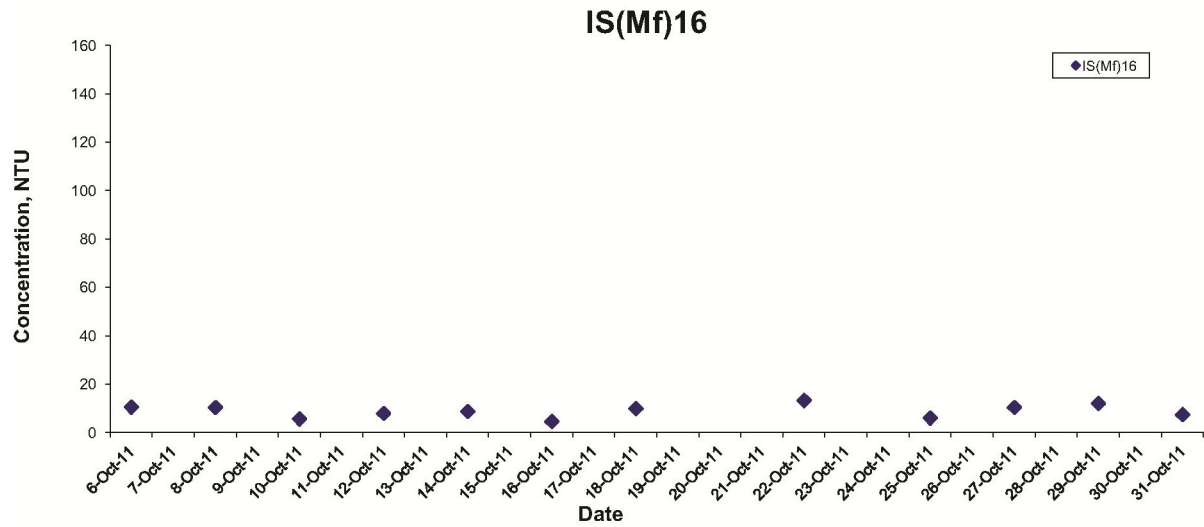
Graphical Presentation of Baseline Water Quality  
Monitoring Results

**Environmental  
Resources  
Management**



FILE: Q:\0215660-C4f  
DATE: 02/10/2013

## Turbidity (Depth-averaged) at Mid-Ebb Tide



Sources : Agreement No. CE 35/2011 (EP) Baseline Environmental Monitoring For Hong Kong-Zhuhai-Macao Bridge Hong Kong Projects - Investigation

Annex C4

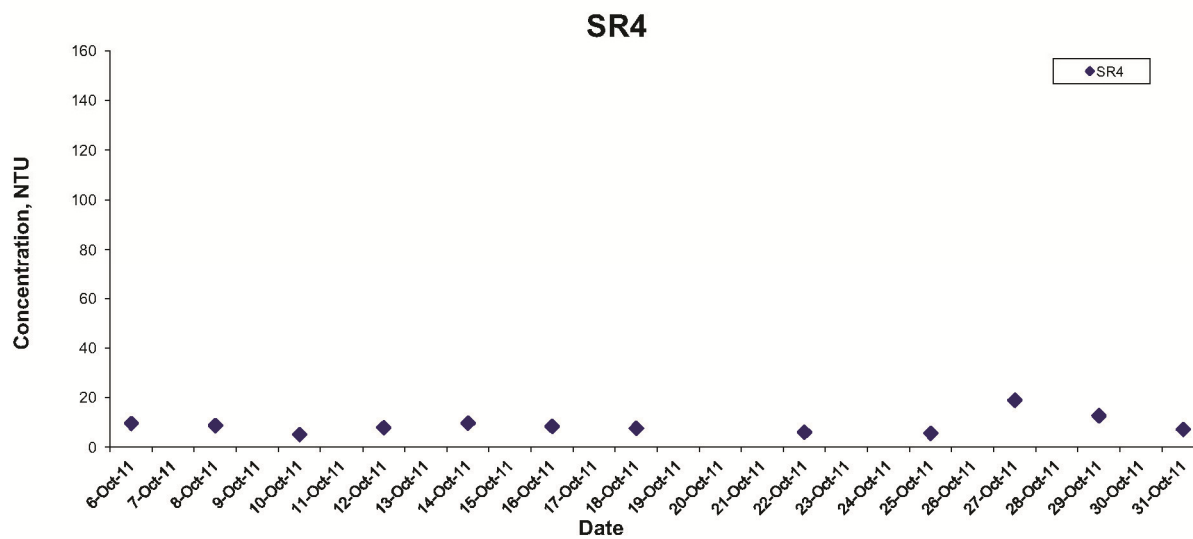
Graphical Presentation of Baseline Water Quality  
Monitoring Results

FILE: Q:\0215660-C4g  
DATE: 02/10/2013

Environmental  
Resources  
Management



## Turbidity (Depth-averaged) at Mid-Ebb Tide



Sources : Agreement No. CE 35/2011 (EP) Baseline Environmental Monitoring For Hong Kong-Zhuhai-Macao Bridge Hong Kong Projects - Investigation

Annex C4

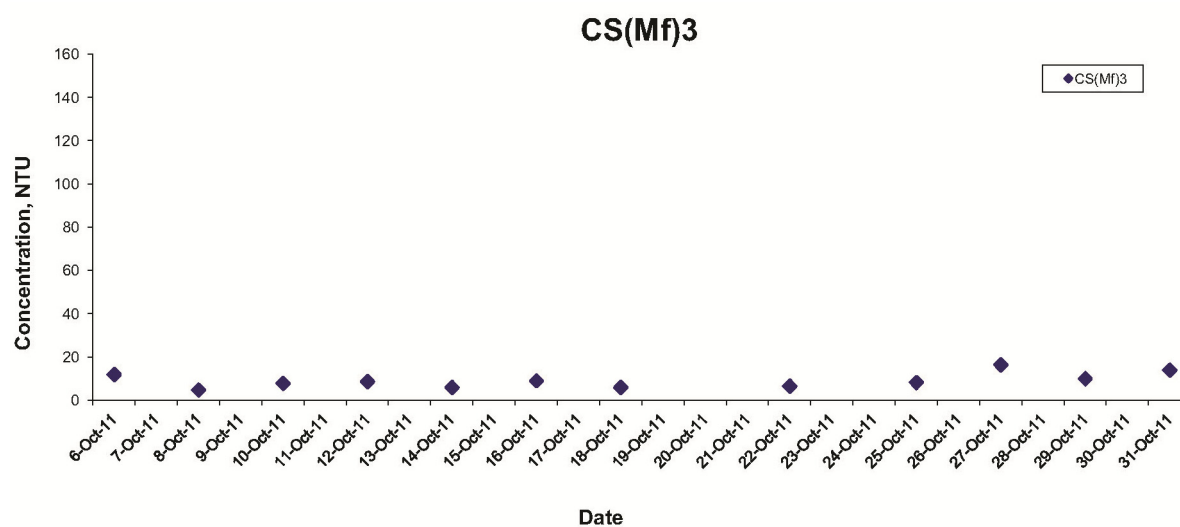
Graphical Presentation of Baseline Water Quality  
Monitoring Results

Environmental  
Resources  
Management



FILE: Q:\0215660-C4g  
DATE: 02/10/2013

## Turbidity (Depth-averaged) at Mid-Flood Tide



Sources : Agreement No. CE 35/2011 (EP) Baseline Environmental Monitoring For Hong Kong-Zhuhai-Macao Bridge Hong Kong Projects - Investigation

Annex C4

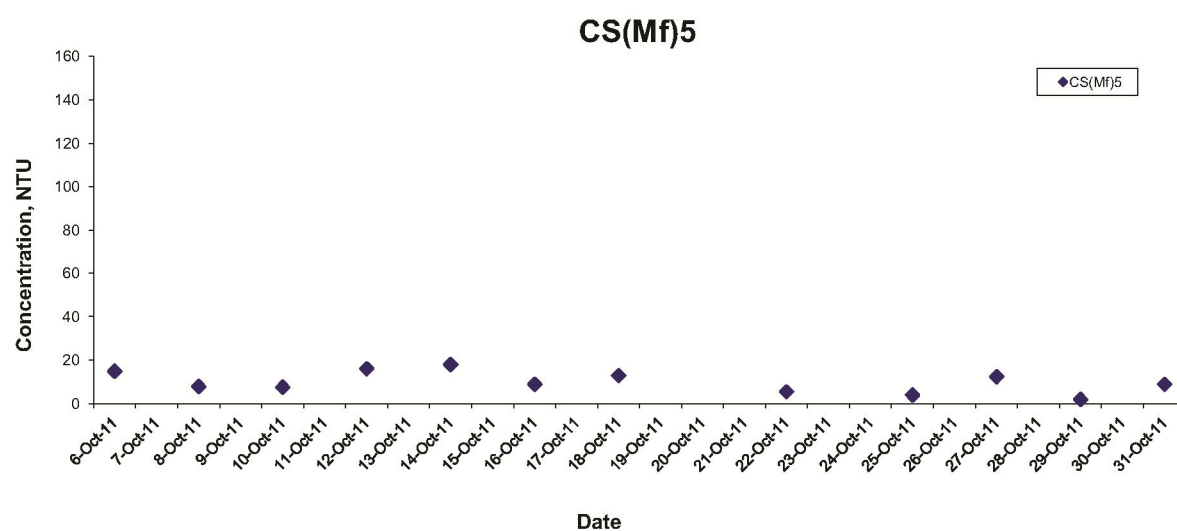
Graphical Presentation of Baseline Water Quality  
Monitoring Results

Environmental  
Resources  
Management



FILE: Q:\0215660-C4g  
DATE: 02/10/2013

## Turbidity (Depth-averaged) at Mid-Flood Tide



Sources : Agreement No. CE 35/2011 (EP) Baseline Environmental Monitoring For Hong Kong-Zhuhai-Macao Bridge Hong Kong Projects - Investigation

Annex C4

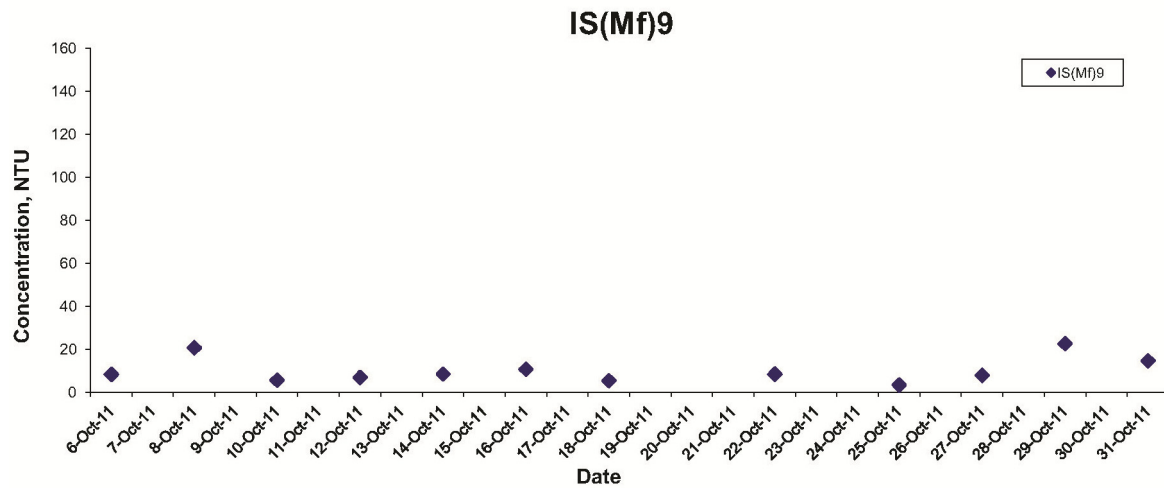
Graphical Presentation of Baseline Water Quality  
Monitoring Results

FILE: Q:\0215660-C4g  
DATE: 02/10/2013

Environmental  
Resources  
Management



## Turbidity (Depth-averaged) at Mid-Flood Tide



Sources : Agreement No. CE 35/2011 (EP) Baseline Environmental Monitoring For Hong Kong-Zhuhai-Macao Bridge Hong Kong Projects - Investigation

Annex C4

Graphical Presentation of Baseline Water Quality  
Monitoring Results

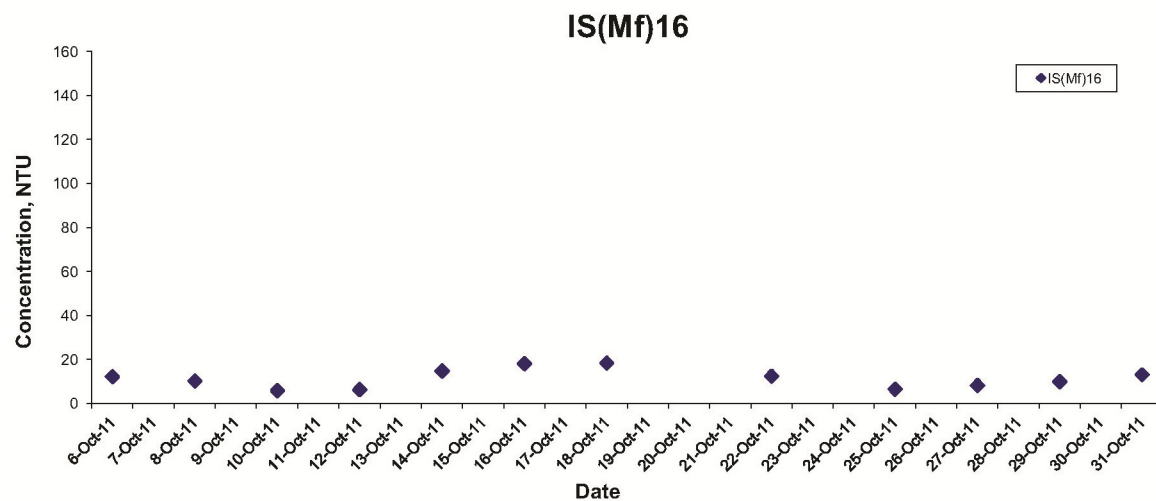
Environmental  
Resources  
Management



FILE: Q:\0215660-C4h  
DATE: 02/10/2013



## Turbidity (Depth-averaged) at Mid-Flood Tide



Sources : Agreement No. CE 35/2011 (EP) Baseline Environmental Monitoring For Hong Kong-Zhuhai-Macao Bridge Hong Kong Projects - Investigation

Annex C4

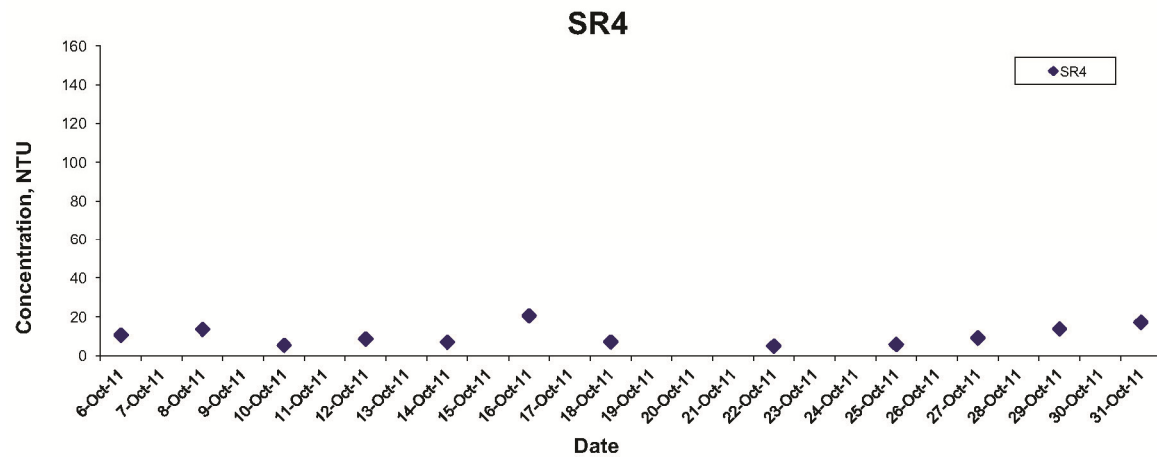
Graphical Presentation of Baseline Water Quality  
Monitoring Results

Environmental  
Resources  
Management



FILE: Q:\0215660-C4h  
DATE: 02/10/2013

## Turbidity (Depth-averaged) at Mid-Flood Tide



Sources : Agreement No. CE 35/2011 (EP) Baseline Environmental Monitoring For Hong Kong-Zhuhai-Macao Bridge Hong Kong Projects - Investigation

Annex C4

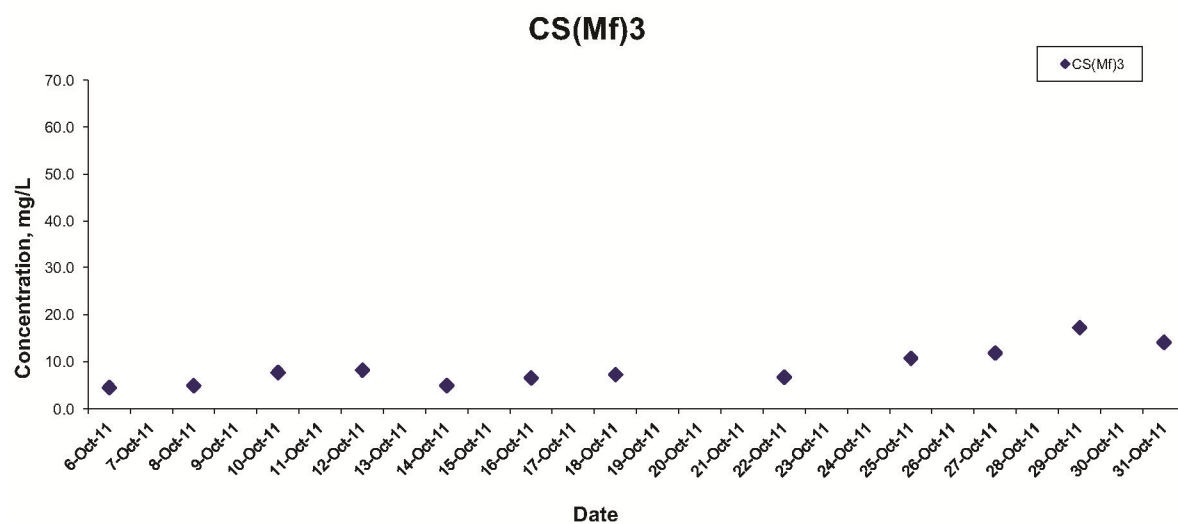
Graphical Presentation of Baseline Water Quality  
Monitoring Results

FILE: Q:\0215660-C4h  
DATE: 02/10/2013

Environmental  
Resources  
Management



## Suspended Solids (Depth-averaged) at Mid-Ebb Tide



Sources : Agreement No. CE 35/2011 (EP) Baseline Environmental Monitoring For Hong Kong-Zhuhai-Macao Bridge Hong Kong Projects - Investigation

Annex C4

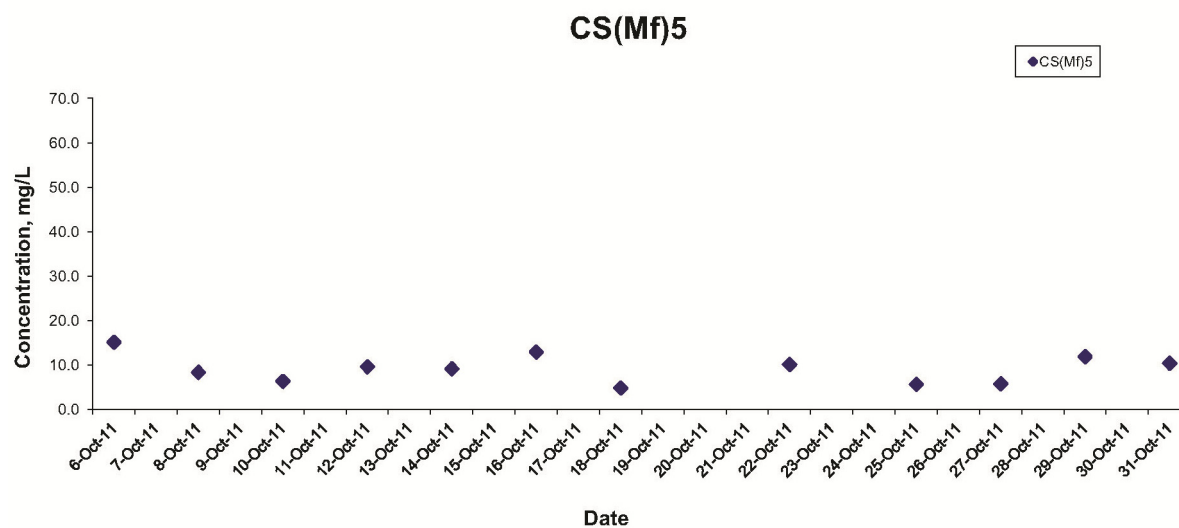
Graphical Presentation of Baseline Water Quality  
Monitoring Results

Environmental  
Resources  
Management



FILE: Q:\0215660-C4i  
DATE: 02/10/2013

## Suspended Solids (Depth-averaged) at Mid-Ebb Tide



Sources : Agreement No. CE 35/2011 (EP) Baseline Environmental Monitoring For Hong Kong-Zhuhai-Macao Bridge Hong Kong Projects - Investigation

Annex C4

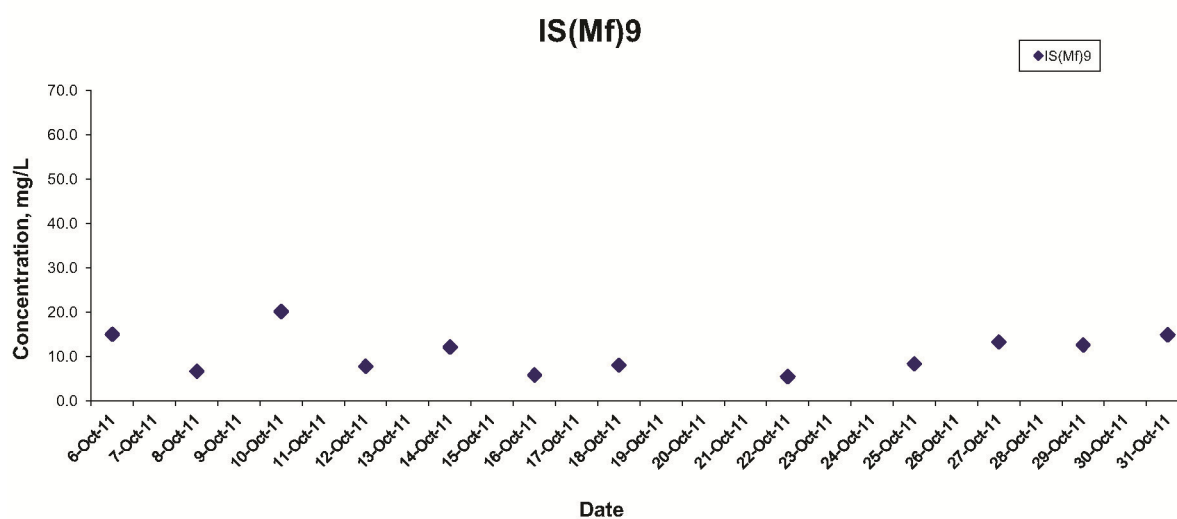
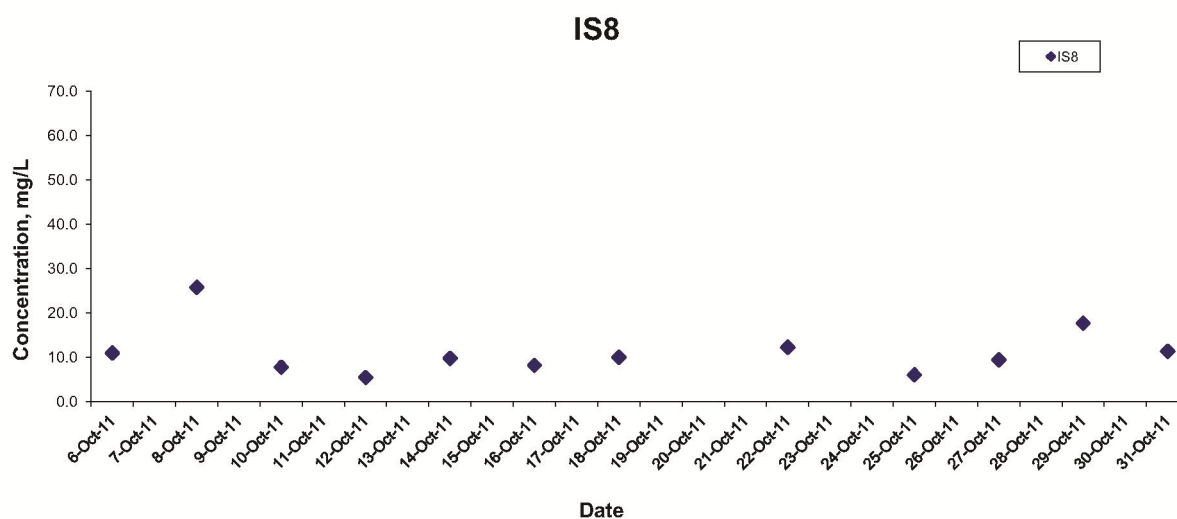
Graphical Presentation of Baseline Water Quality  
Monitoring Results

Environmental  
Resources  
Management



FILE: Q:\0215660-C4i  
DATE: 02/10/2013

## Suspended Solids (Depth-averaged) at Mid-Ebb Tide



Sources : Agreement No. CE 35/2011 (EP) Baseline Environmental Monitoring For Hong Kong-Zhuhai-Macao Bridge Hong Kong Projects - Investigation

Annex C4

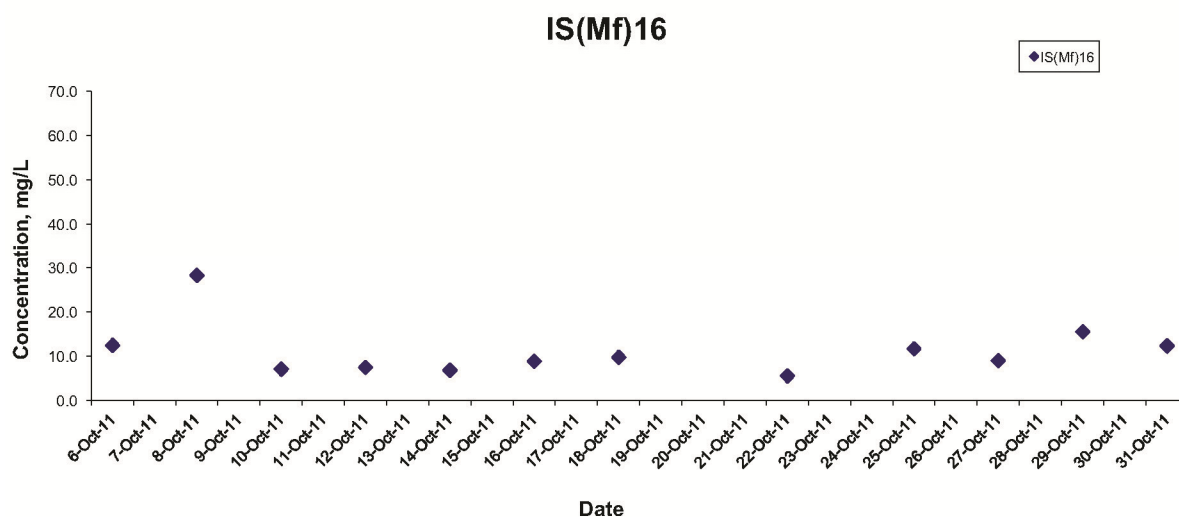
Graphical Presentation of Baseline Water Quality  
Monitoring Results

Environmental  
Resources  
Management



FILE: Q:\0215660-C4i  
DATE: 02/10/2013

## Suspended Solids (Depth-averaged) at Mid-Ebb Tide



Sources : Agreement No. CE 35/2011 (EP) Baseline Environmental Monitoring For Hong Kong-Zhuhai-Macao Bridge Hong Kong Projects - Investigation

Annex C4

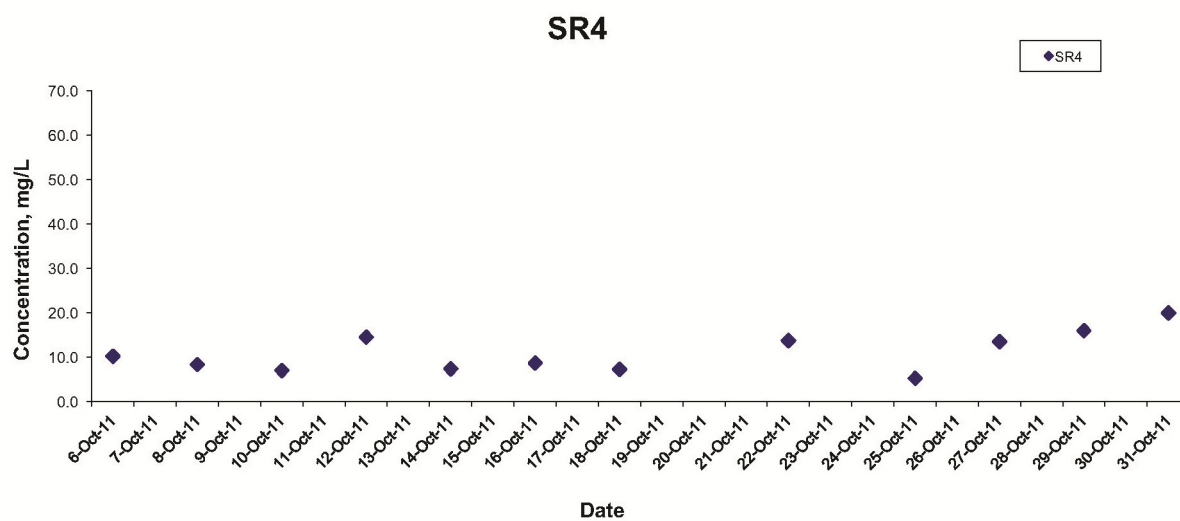
Graphical Presentation of Baseline Water Quality  
Monitoring Results

Environmental  
Resources  
Management



FILE: Q:\0215660-C4i  
DATE: 02/10/2013

## Suspended Solids (Depth-averaged) at Mid-Ebb Tide



Sources : Agreement No. CE 35/2011 (EP) Baseline Environmental Monitoring For Hong Kong-Zhuhai-Macao Bridge Hong Kong Projects - Investigation

Annex C4

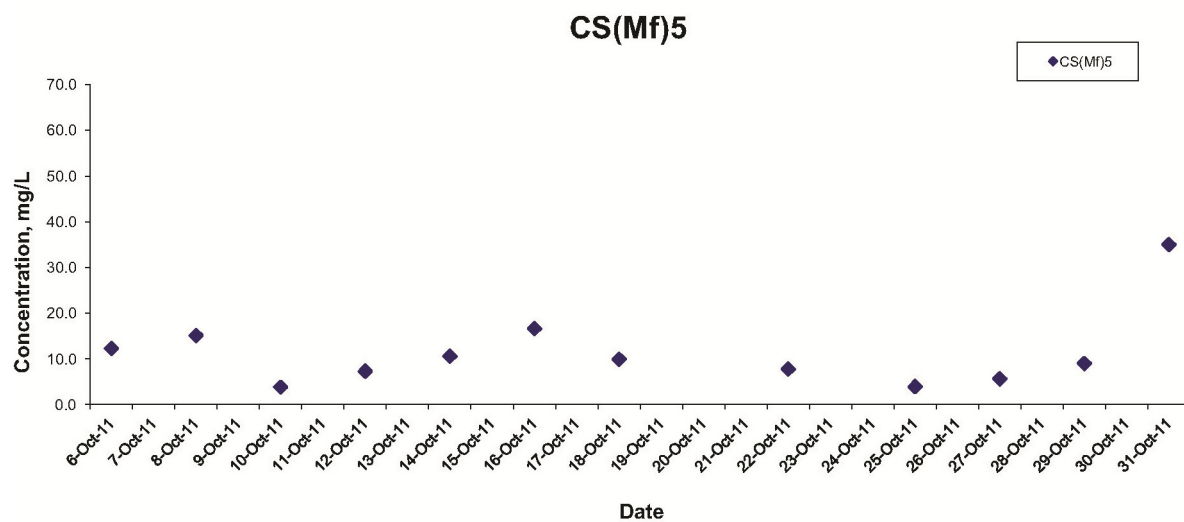
Graphical Presentation of Baseline Water Quality  
Monitoring Results

Environmental  
Resources  
Management



FILE: Q:\0215660-C4j  
DATE: 02/10/2013

## Suspended Solids (Depth-averaged) at Mid-Flood Tide



Sources : Agreement No. CE 35/2011 (EP) Baseline Environmental Monitoring For Hong Kong-Zhuhai-Macao Bridge Hong Kong Projects - Investigation

Annex C4

Graphical Presentation of Baseline Water Quality  
Monitoring Results

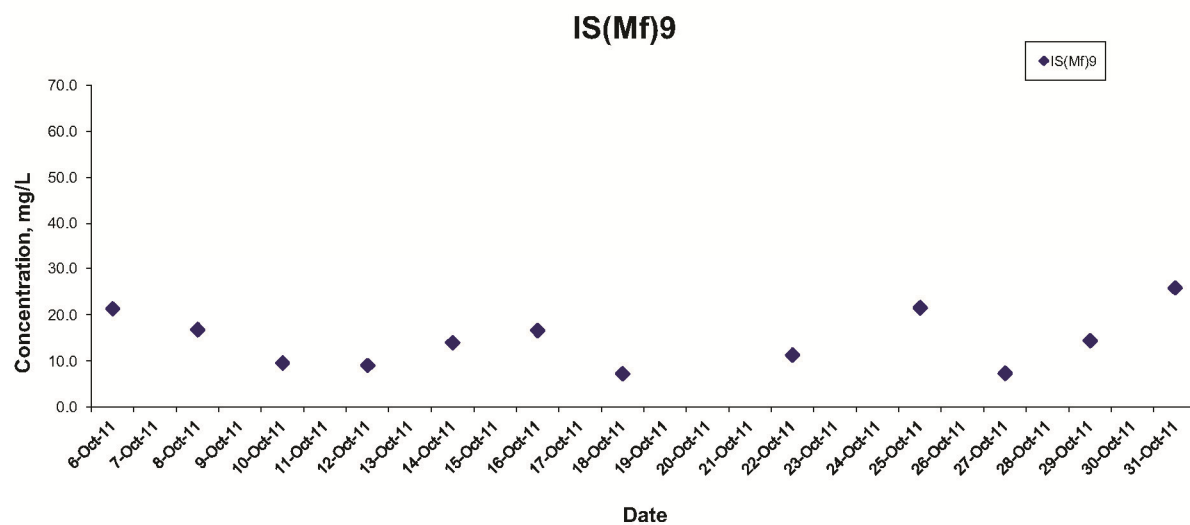
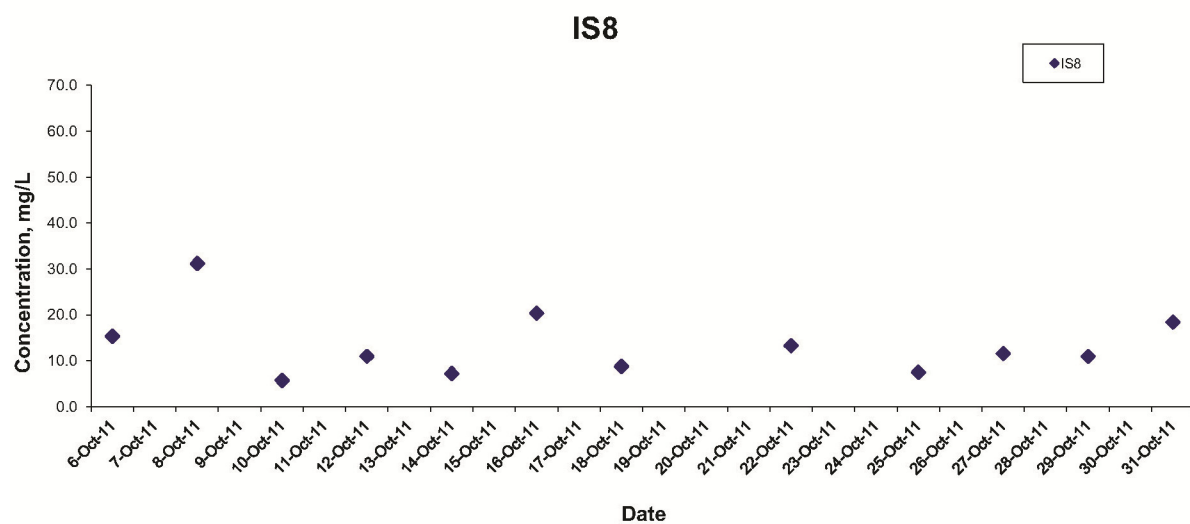
FILE: Q:\0215660-C4j  
DATE: 02/10/2013

Environmental  
Resources  
Management





## Suspended Solids (Depth-averaged) at Mid-Flood Tide



Sources : Agreement No. CE 35/2011 (EP) Baseline Environmental Monitoring For Hong Kong-Zhuhai-Macao Bridge Hong Kong Projects - Investigation

Annex C4

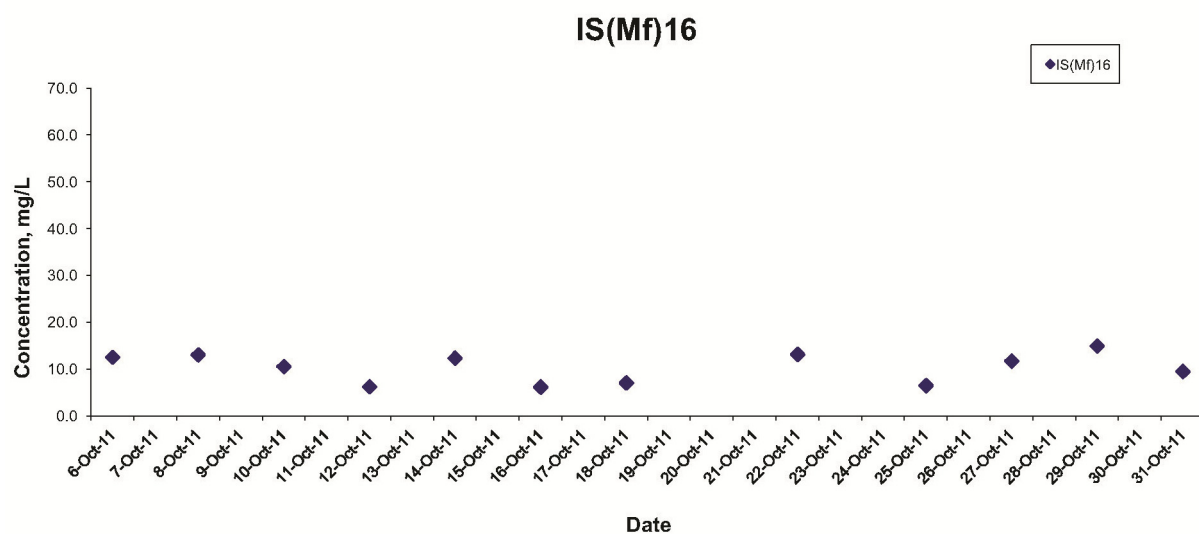
Graphical Presentation of Baseline Water Quality  
Monitoring Results

Environmental  
Resources  
Management



FILE: Q:\0215660-C4k  
DATE: 02/10/2013

## Suspended Solids (Depth-averaged) at Mid-Flood Tide



Sources : Agreement No. CE 35/2011 (EP) Baseline Environmental Monitoring For Hong Kong-Zhuhai-Macao Bridge Hong Kong Projects - Investigation

Annex C4

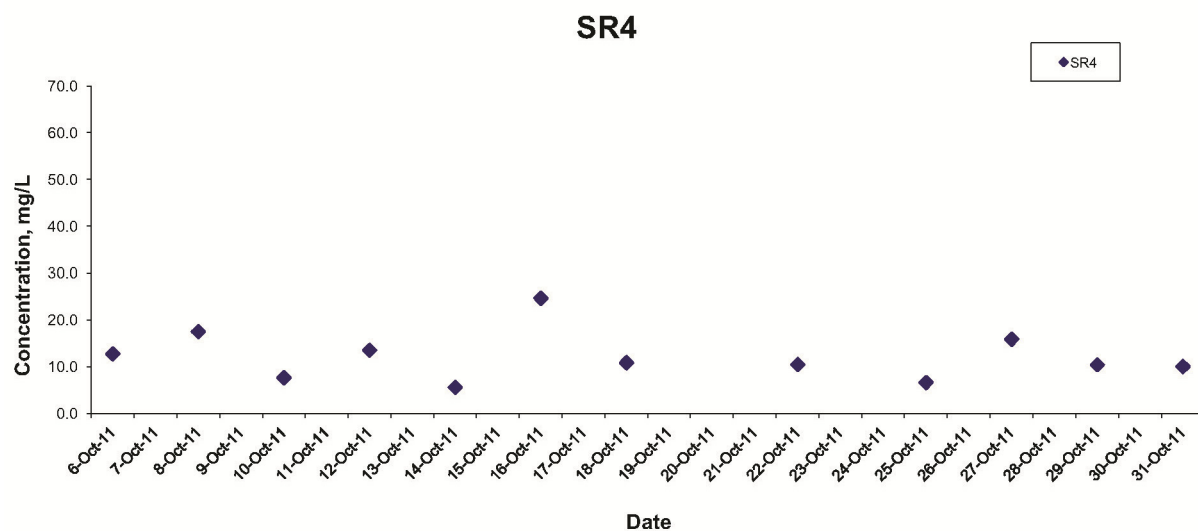
Graphical Presentation of Baseline Water Quality  
Monitoring Results

Environmental  
Resources  
Management



FILE: Q:\0215660-C4k  
DATE: 02/10/2013

## Suspended Solids (Depth-averaged) at Mid-Flood Tide



Sources : Agreement No. CE 35/2011 (EP) Baseline Environmental Monitoring For Hong Kong-Zhuhai-Macao Bridge Hong Kong Projects - Investigation

Annex C4

Graphical Presentation of Baseline Water Quality  
Monitoring Results

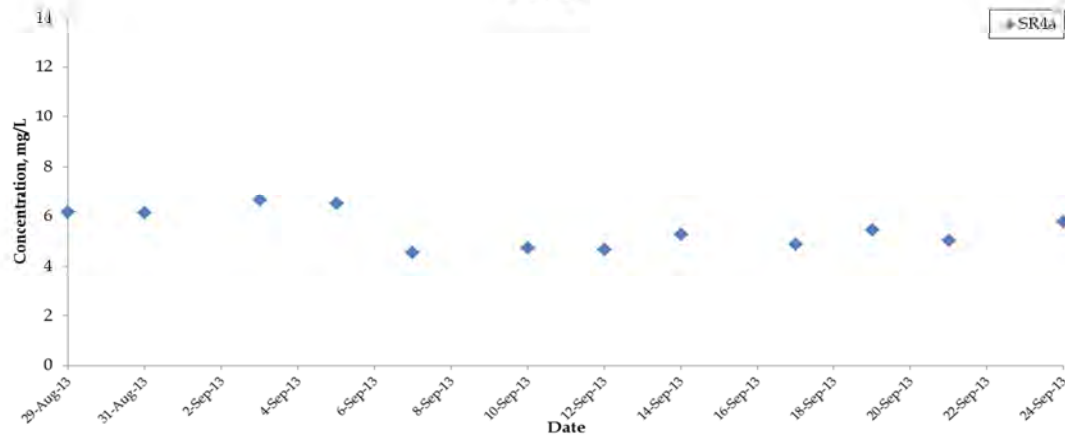
Environmental  
Resources  
Management



FILE: Q:\0215660-C4k  
DATE: 02/10/2013

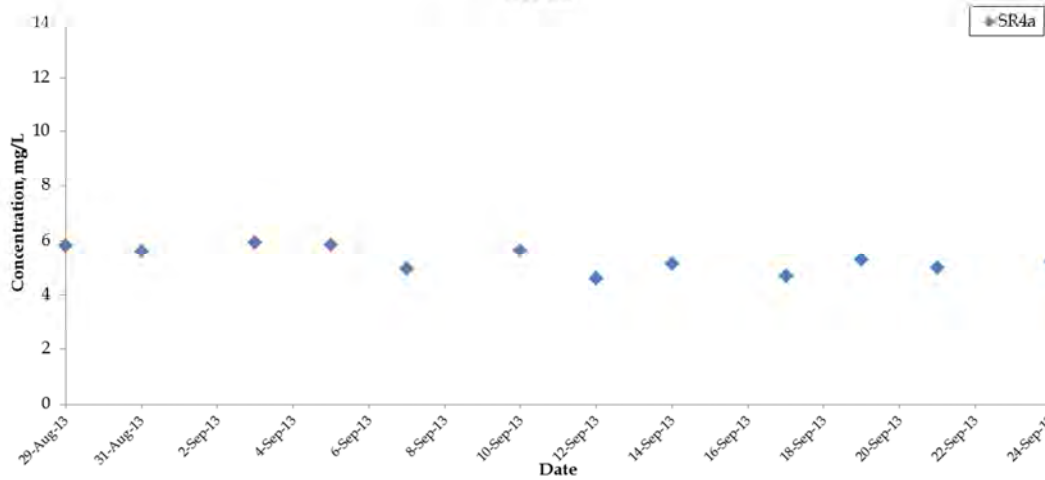
### Dissolved Oxygen (Surface & Middle) at Mid-Ebb Tide

SR4a



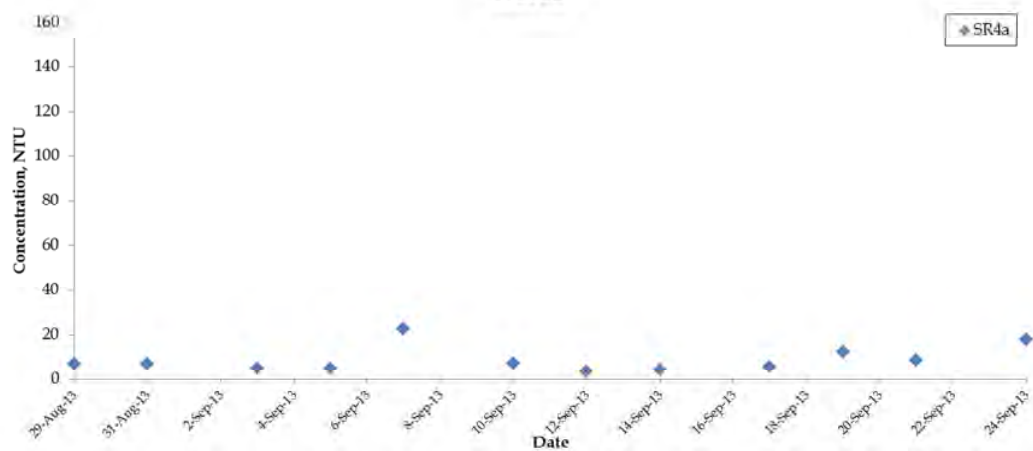
### Dissolved Oxygen (Bottom) at Mid-Ebb Tide

SR4a



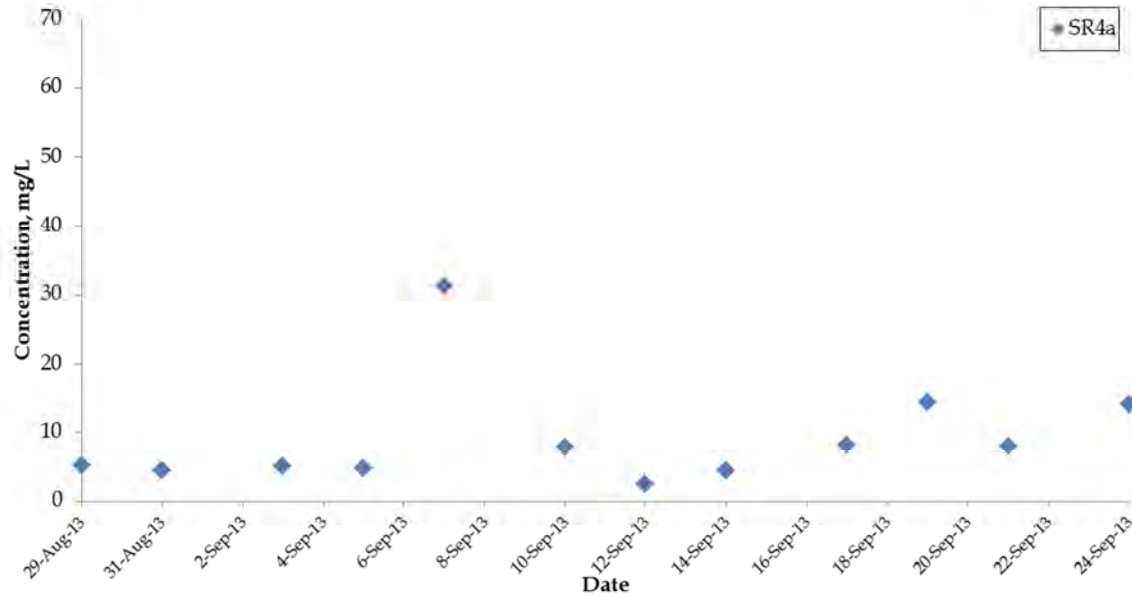
### Turbidity (Depth-Averaged) at Mid-Ebb Tide

SR4a

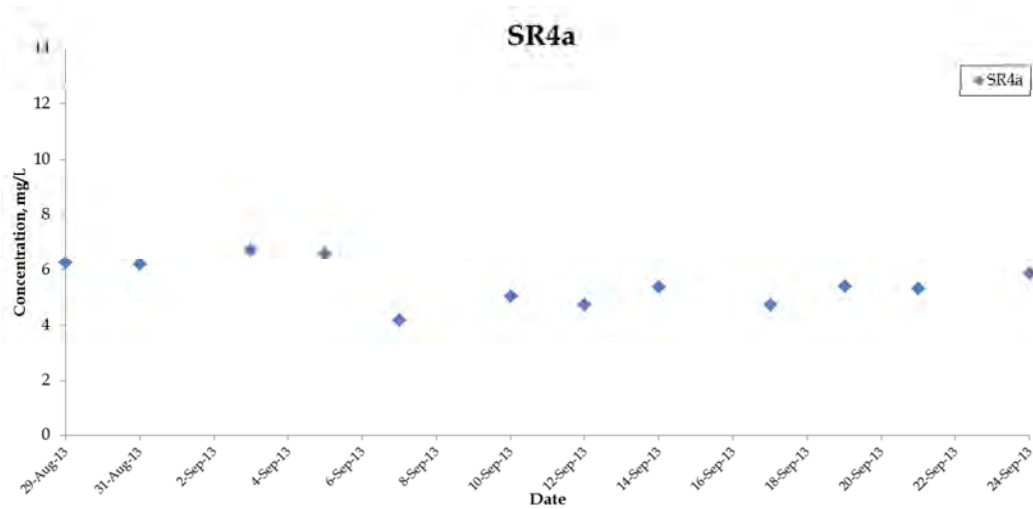


## Suspended Solids (Depth-Averaged) at Mid-Ebb Tide

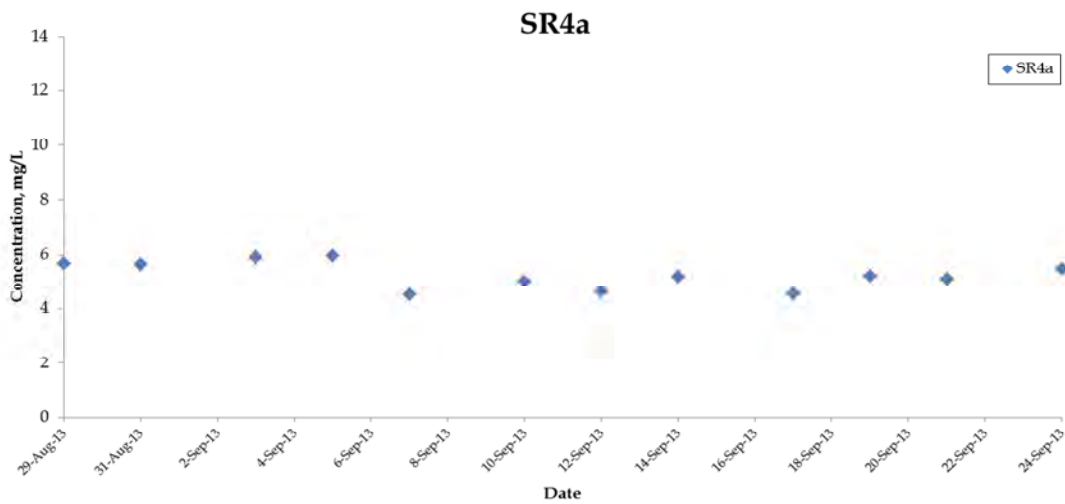
SR4a



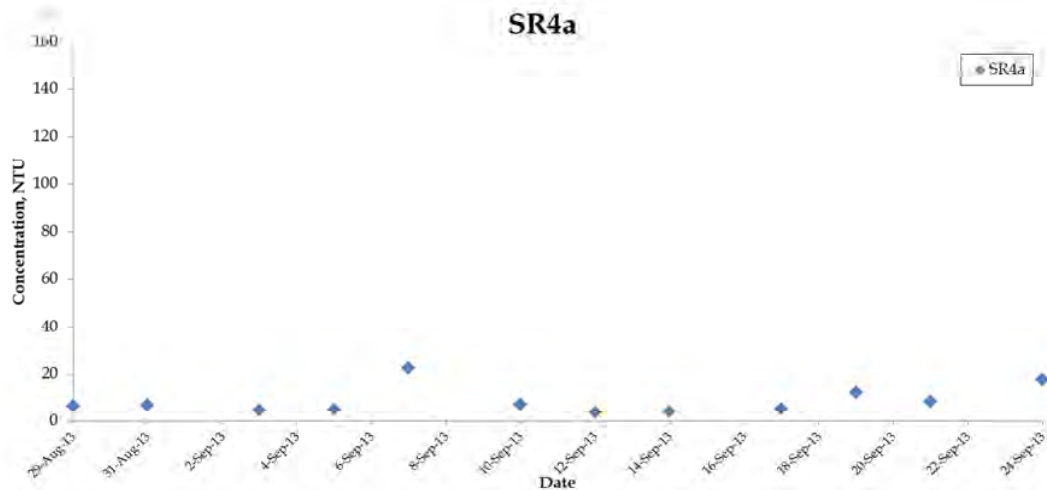
### Dissolved Oxygen (Surface & Middle) at Mid-Flood Tide



### Dissolved Oxygen (Bottom) at Mid-Flood Tide



### Turbidity (Depth-Averaged) at Mid-Flood Tide



### Suspended Solids (Depth-Averaged) at Mid-Flood Tide

SR4a

