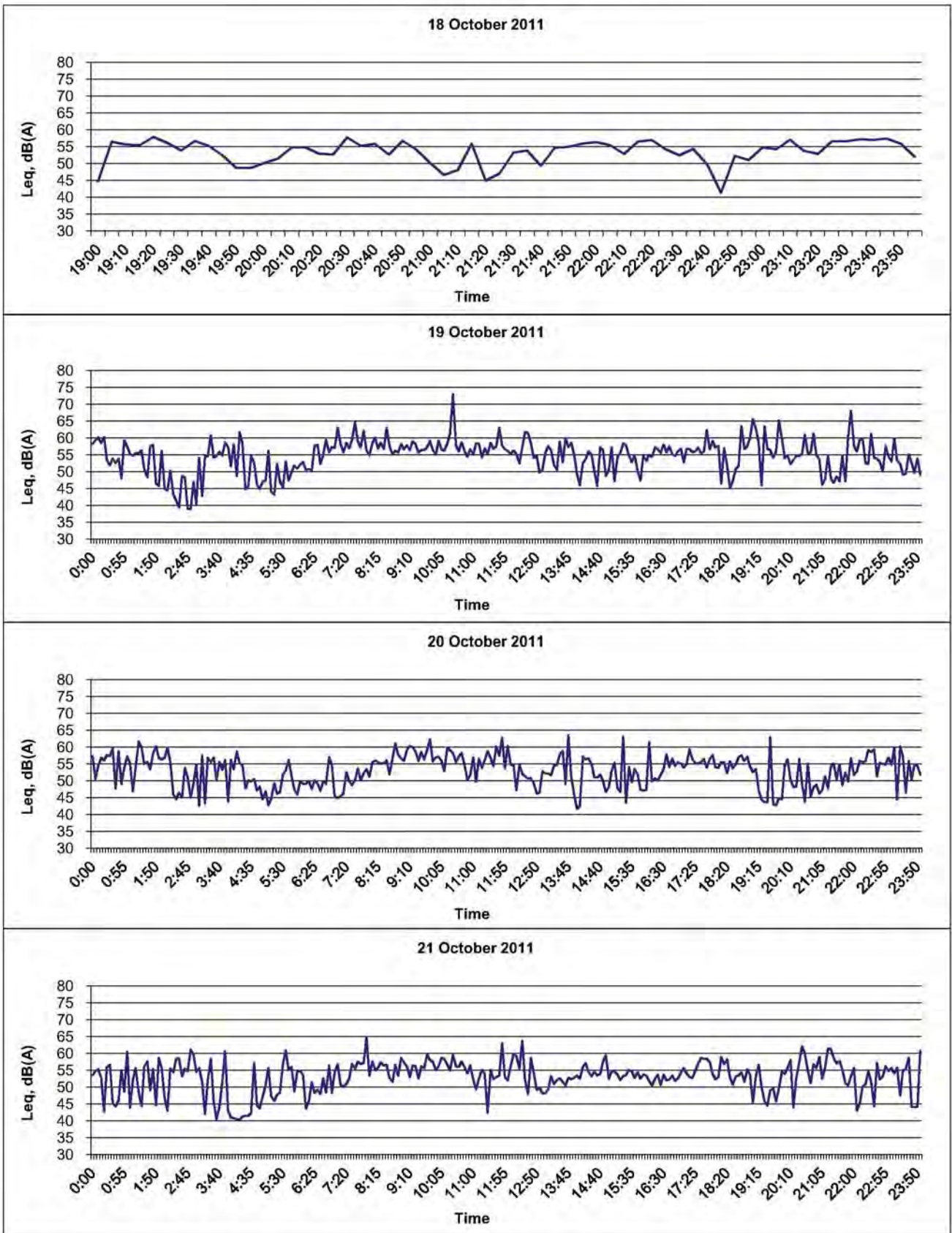


Noise Level at Pak Mong Village_NSR 1



Sources : Agreement No. CE 35/2011 (EP) Baseline Environmental Monitoring For Hong Kong-Zhuhai-Macao Bridge Hong Kong Projects - Investigation

Annex B5

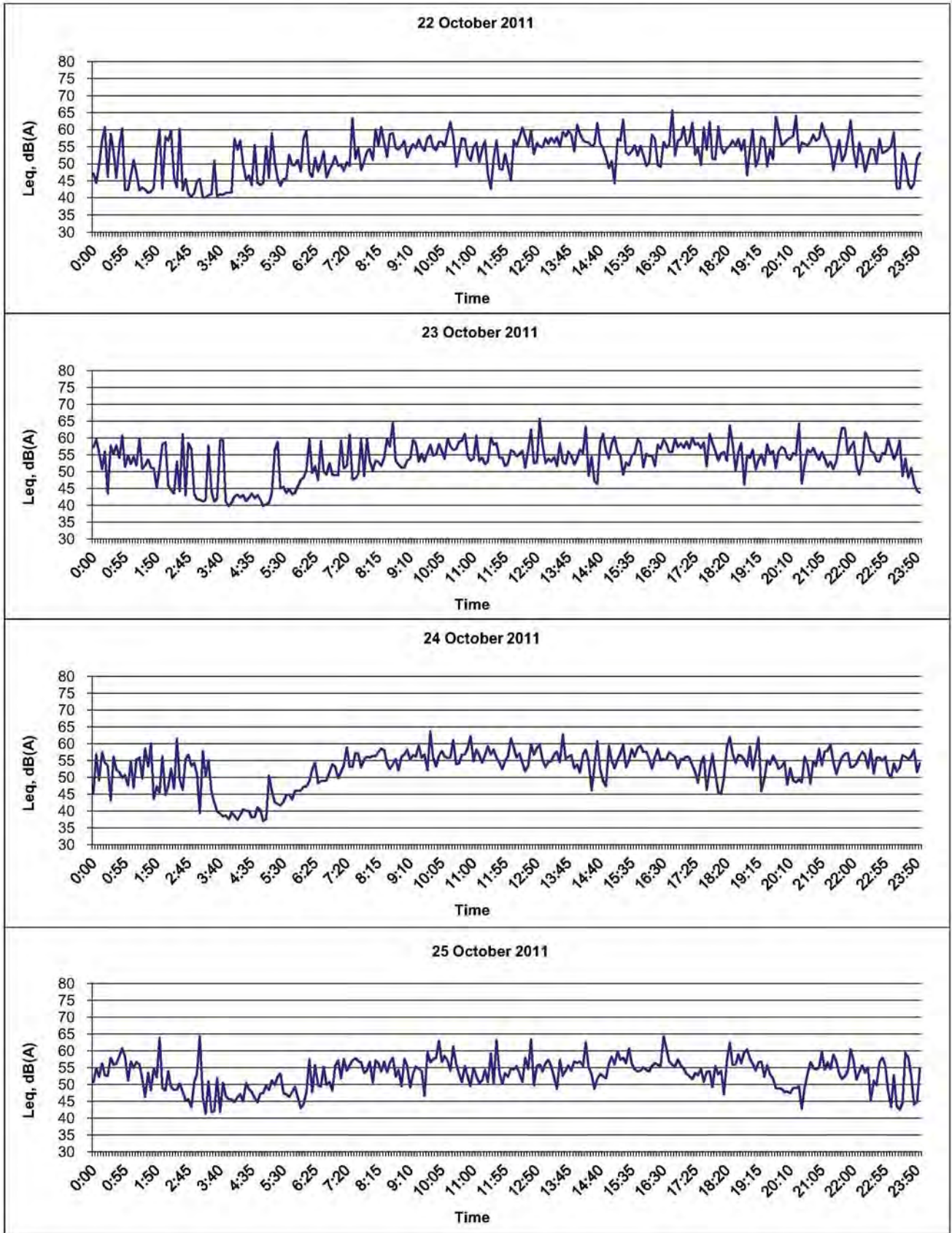
Graphical Presentation of Baseline Noise Levels
at Pak Mong Village_NSR 1

Environmental
Resources
Management



FILE: 0215660i27
DATE: 30/09/2013

Noise Level at Pak Mong Village_NSR 1



Sources : Agreement No. CE 35/2011 (EP) Baseline Environmental Monitoring For Hong Kong-Zhuhai-Macao Bridge Hong Kong Projects - Investigation

Annex B5

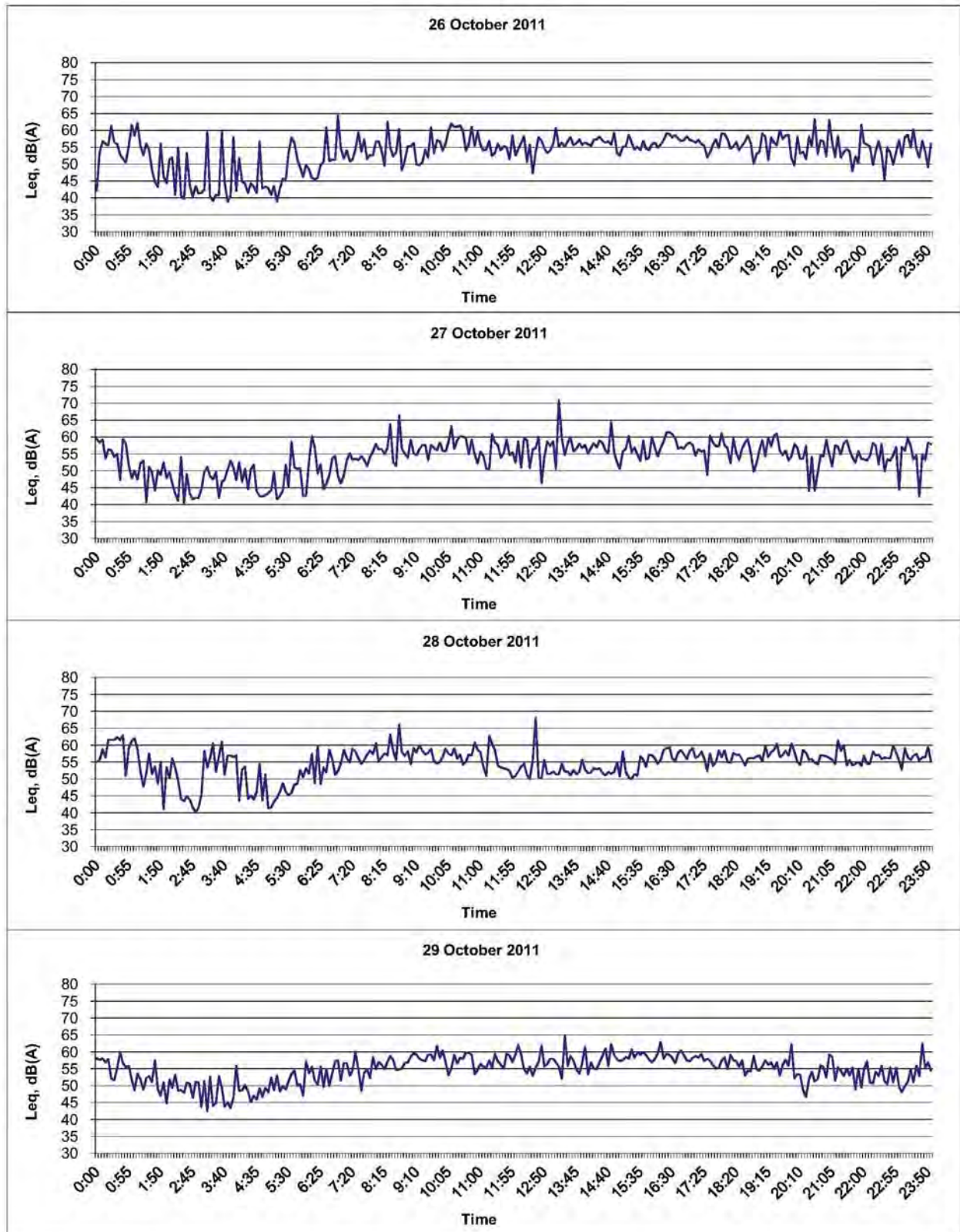
Graphical Presentation of Baseline Noise Levels
at Pak Mong Village_NSR 1

Environmental
Resources
Management



FILE: 0215660I28
DATE: 30/09/2013

Noise Level at Pak Mong Village_NSR 1



Sources : Agreement No. CE 35/2011 (EP) Baseline Environmental Monitoring For Hong Kong-Zhuhai-Macao Bridge Hong Kong Projects - Investigation

Annex B5

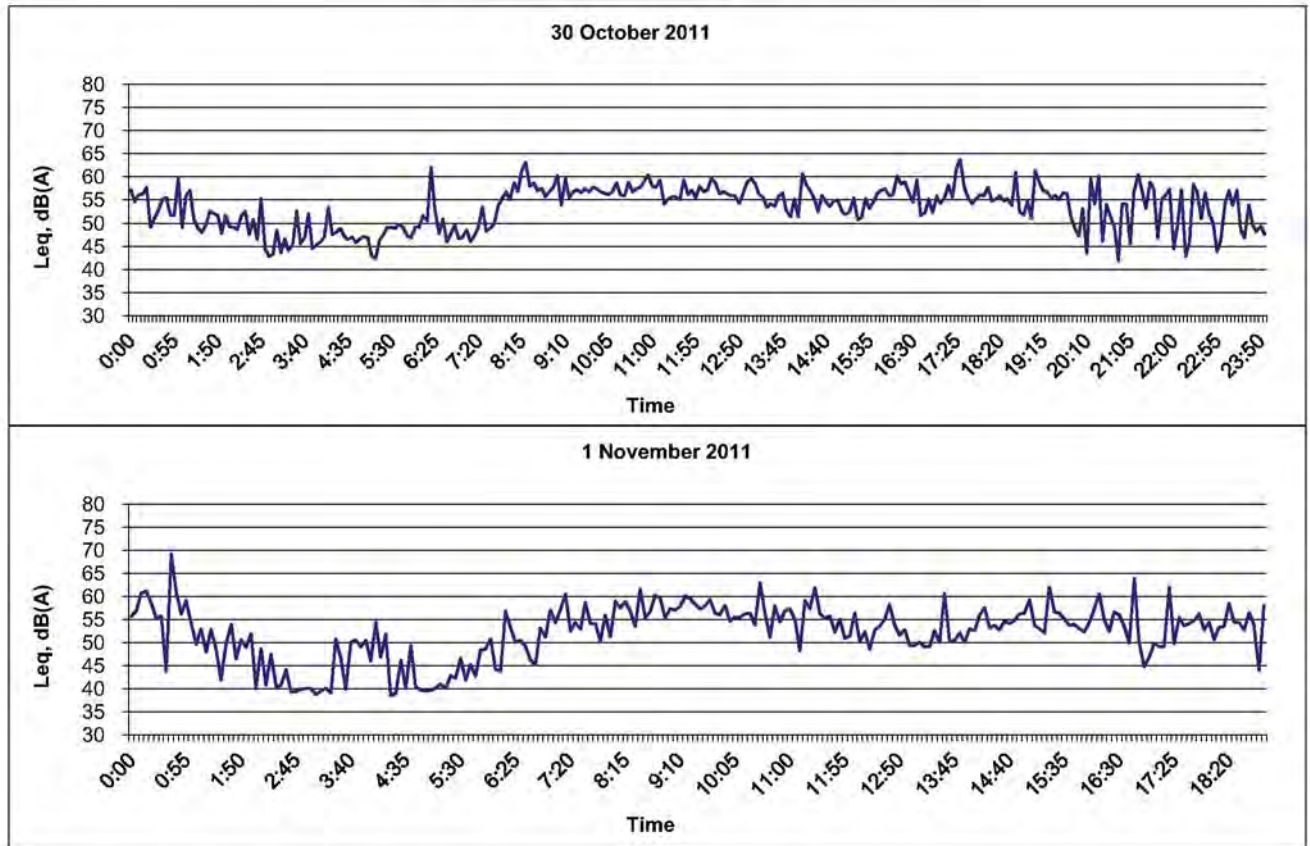
Graphical Presentation of Baseline Noise Levels
at Pak Mong Village_NSR 1

Environmental
Resources
Management



FILE: 0215660i29
DATE: 30/09/2013

Noise Level at Pak Mong Village_NSR 1



Sources : Agreement No. CE 35/2011 (EP) Baseline Environmental Monitoring For Hong Kong-Zhuhai-Macao Bridge Hong Kong Projects - Investigation

Annex B5

Graphical Presentation of Baseline Noise Levels
at Pak Mong Village_NSR 1

Environmental
Resources
Management



FILE: 0215660i30
DATE: 30/09/2013