

Setting Out Point for Transect					
Point	Easting	Northing	Point	Easting	Northing
C1	814778.2430	818276.7233	C18	815093.1725	818357.7636
C2	814973.2643	818356.5572	C19	815008.3556	818326.5015
C3	814812.6523	818202.1347	C20	815224.7779	818331.0124
C4	814841.6066	818128.1756	C21	815245.1437	818268.1515
C5	815027.7108	818209.2946	C22	815067.1009	818185.9498
C6	814869.0921	818055.5278	C23	815282.6338	818194.9486
C7	815058.8681	818141.3413	C24	815095.6903	818115.2196
C8	814896.1580	817983.1422	C25	815115.5439	818079.1842
C9	815091.2580	818069.7164	C26	815292.1803	818160.4868
C10	815095.2707	818033.9695	C27	815289.4314	818237.4912
C11	814909.7958	817951.4604	C28	815401.0742	818296.0613
C12	814880.4220	817942.9105	C29	815319.0626	818177.7964
C13	814693.1637	817897.9056	C30	815446.1570	818244.8841
C14	814878.4288	817973.3353	C31	815111.5312	818040.1589
C15	814781.0755	817938.8192	C32	815289.9773	818128.9099
C16	814766.0738	817973.3353	C33	815310.5128	818136.9353
C17	814862.4830	818008.5821	C34	815495.5680	818242.7860

**Key**

- ▲ Water Quality Monitoring Station
- Coral Area (Both Gorgonian and Balanophyllia sp.)
- REA Transects
- Spot check dive transect
- Temporary Landing Platform

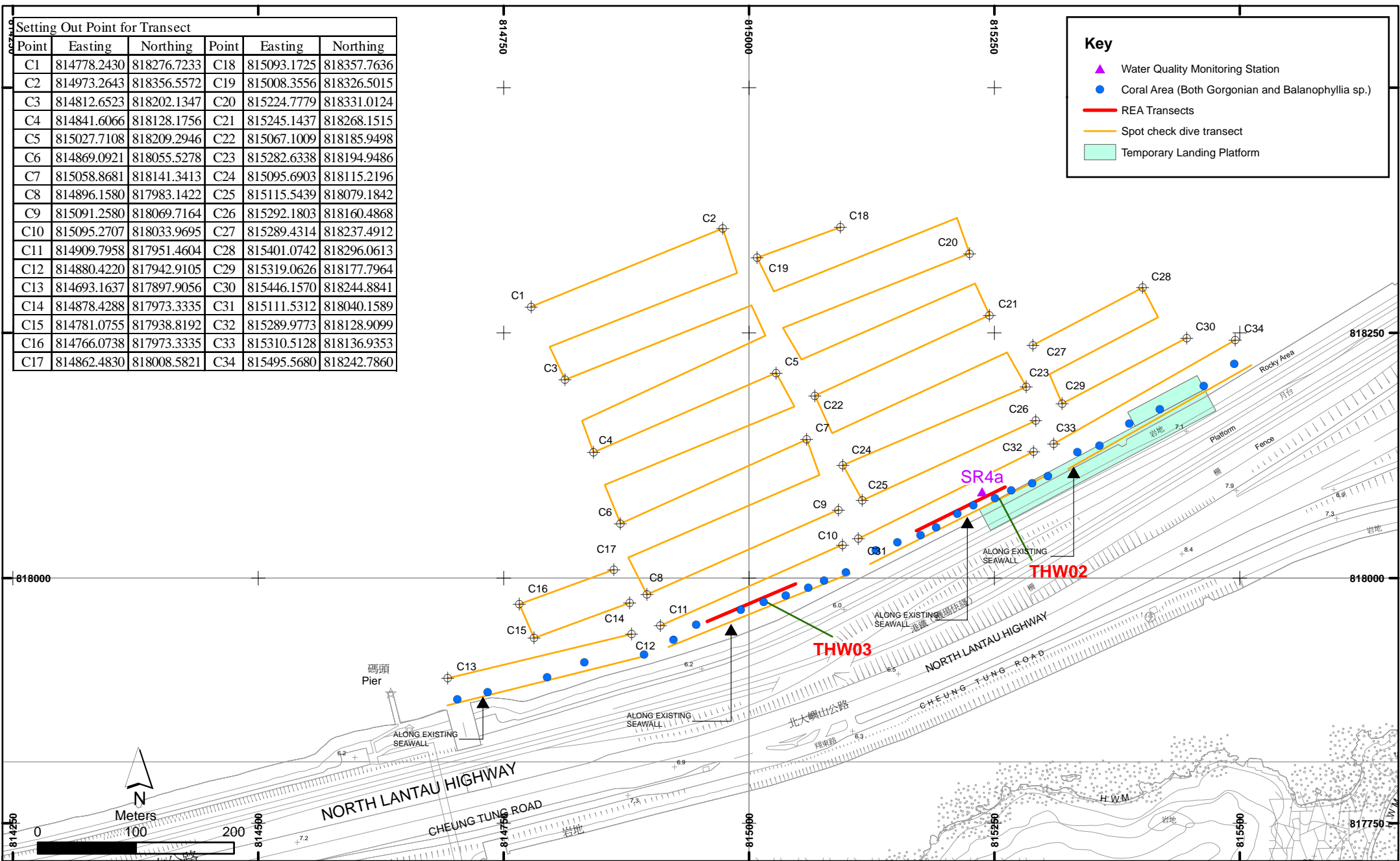


Figure 3.4

Indicative Locations of Coral Area and REA Transect at Tai Ho Wan

File: T:\GIS\CONTRACT\0212330\Mxd\0212330\_Indicative\_locations\_of\_coral\_REA\_at\_Tai\_Ho\_Wan.mxd  
Date: 21/3/2014

**Environmental Resources Management**