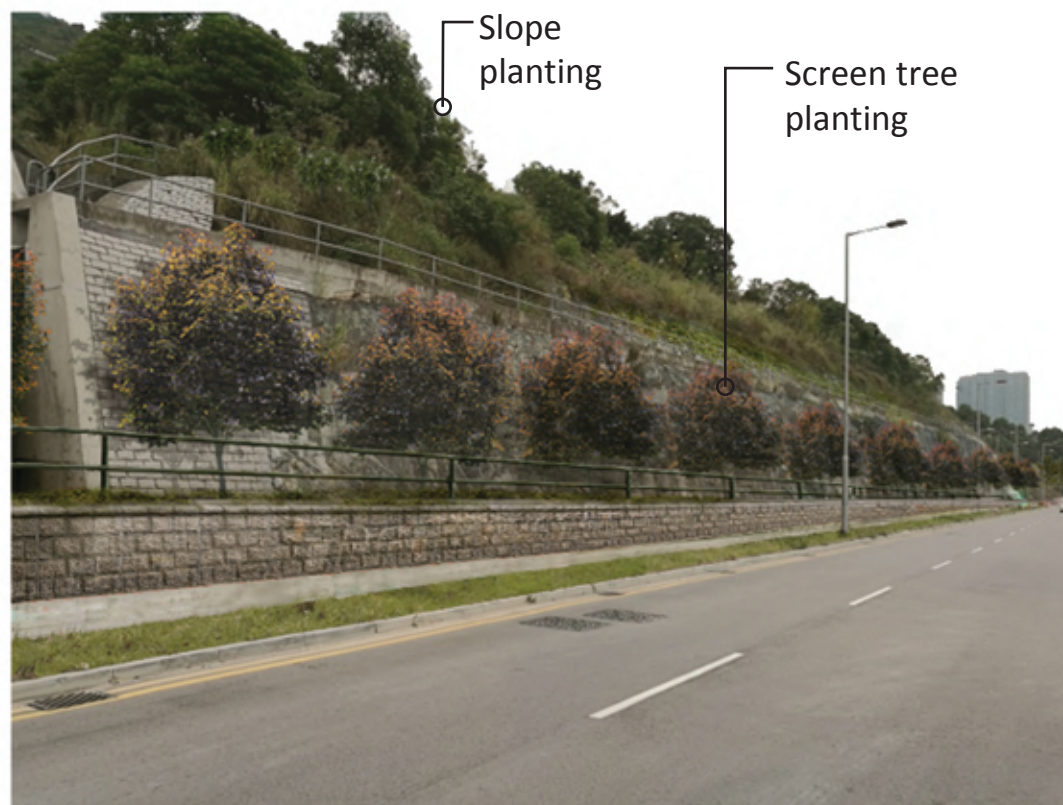
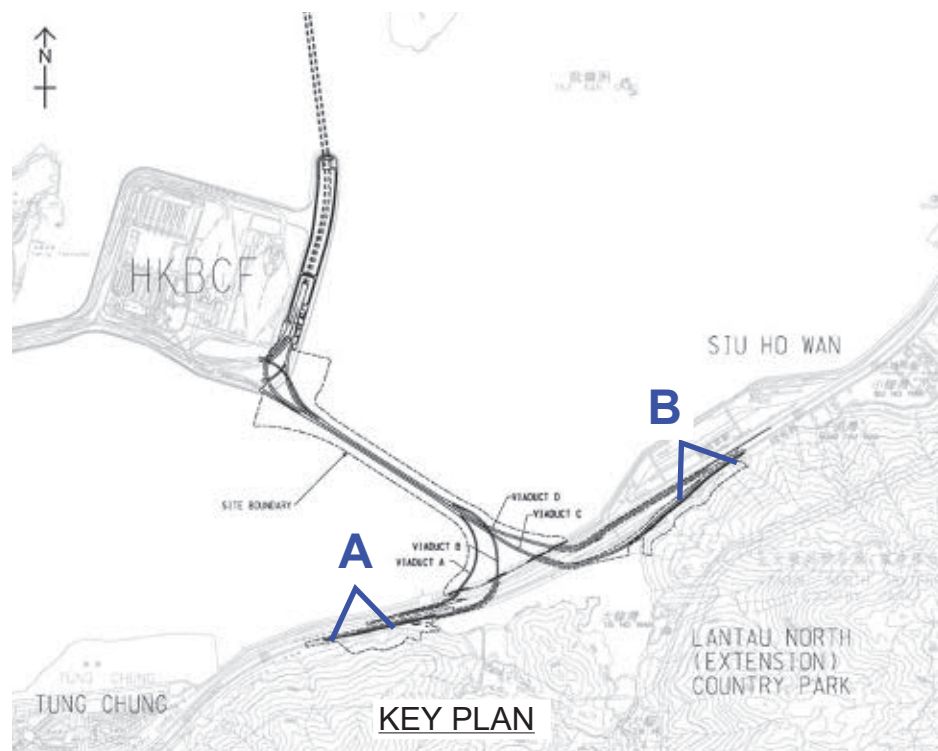


## ***Appendix F***

---

### ***Implementation of Mitigation Measures***

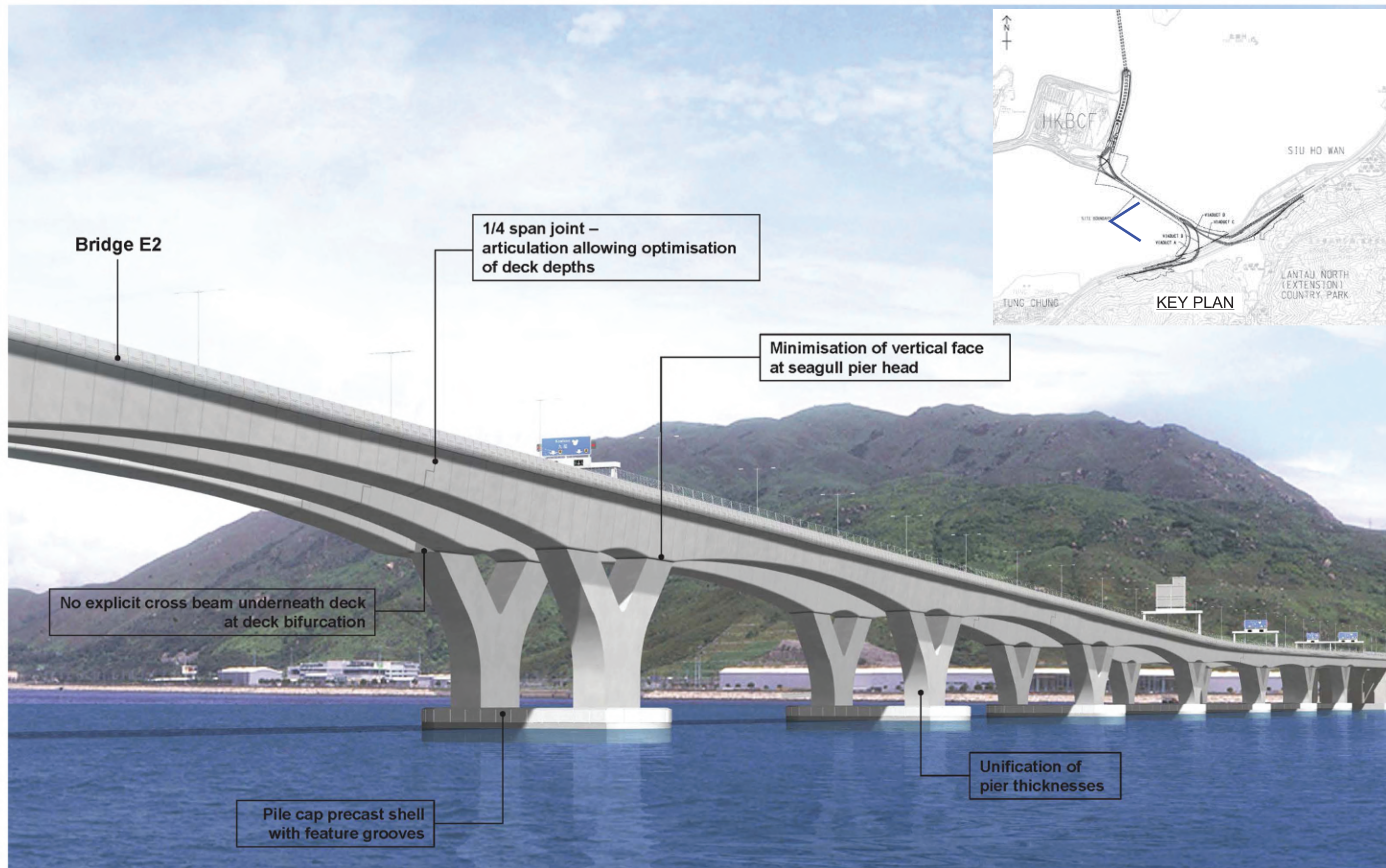


A - SCREEN TREE PLANTING AND SLOPE PLANTING  
ALONG CHEUNG TUNG ROAD



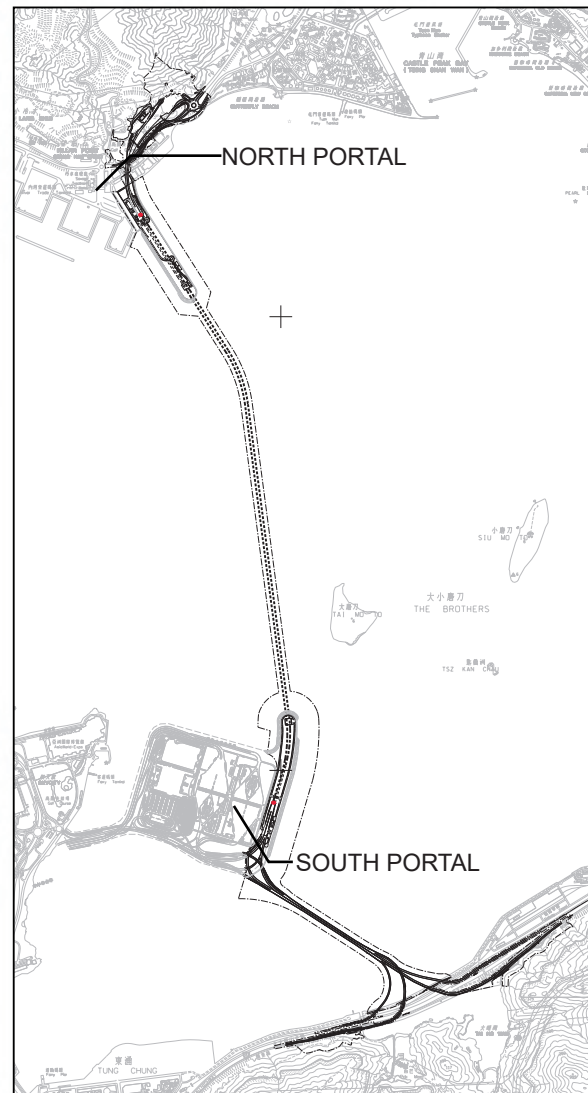
B - ROADSIDE PLANTING AND ADJACENT SLOPES WITH EXISTING WOODLAND AND  
SHRUBLAND ALONG CHEUNG TUNG ROAD





THE VIADUCT AND SEAGULL PIERS  
 (reference to ACABAS Submission - General Design Submission Package AP09.00 - Ref: J3518/OAP/PDR/004 Rev.A)





KEY PLAN

#### Practical

The pattern on the retaining wall is intended to mitigate the potential abrupt change perceived by drivers entering and leaving the tunnel. This is achieved by gradual change of concrete texture on the retaining wall such that drivers will have a sense of threshold when they are approaching or leaving the portal entrance

#### Aesthetic

A welcoming architectural feature for tunnel entrance is created by visually joining the side walls and portal together, with a simple incline detail at the top. The new architectural feature gives an impressive and welcoming symbol to match the tunnel entrance. In order to echo with the vehicular nature of this project, the gradual change of concrete texture on retaining wall creates a sense of dynamics to the drivers.

#### Smooth Concrete (KEIM Concretal C 9432)

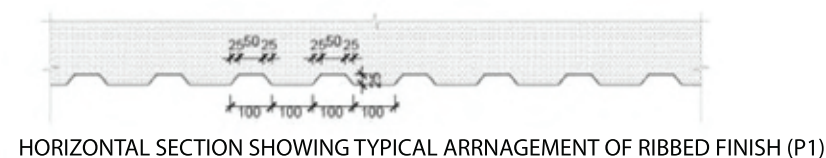
created using F4 formwork with panels defined by grooves

#### Smooth Concrete (KEIM Concretal C 9435)

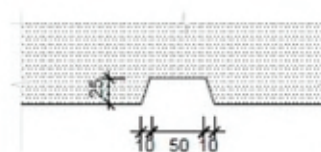
created using F4 formwork with panels defined by grooves

#### Ribbed Finish

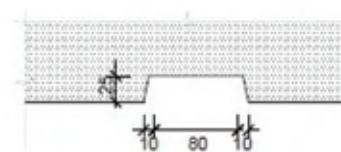
Applying F5 specialist formwork. The ribs will be vertical (to encourage water run-off) and all faces of the ribs will be smooth.



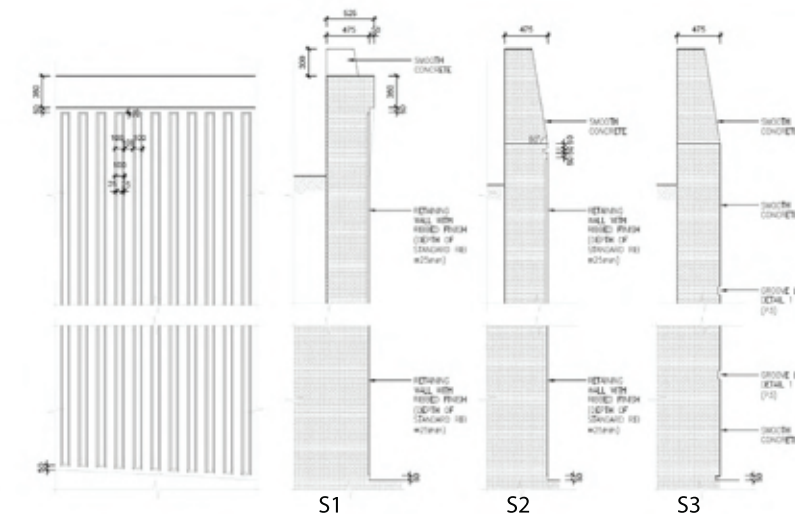
HORIZONTAL SECTION SHOWING TYPICAL ARRANGEMENT OF RIBBED FINISH (P1)



GROOVE LINE DETAIL 1 (P3)



GROOVE LINE DETAIL 2 (P4)



DETAILS OF RIBBED FINISH ON RETAINING WALL



(reference to ACABAS submission for North & South Tunnel Portals: Rev. D)

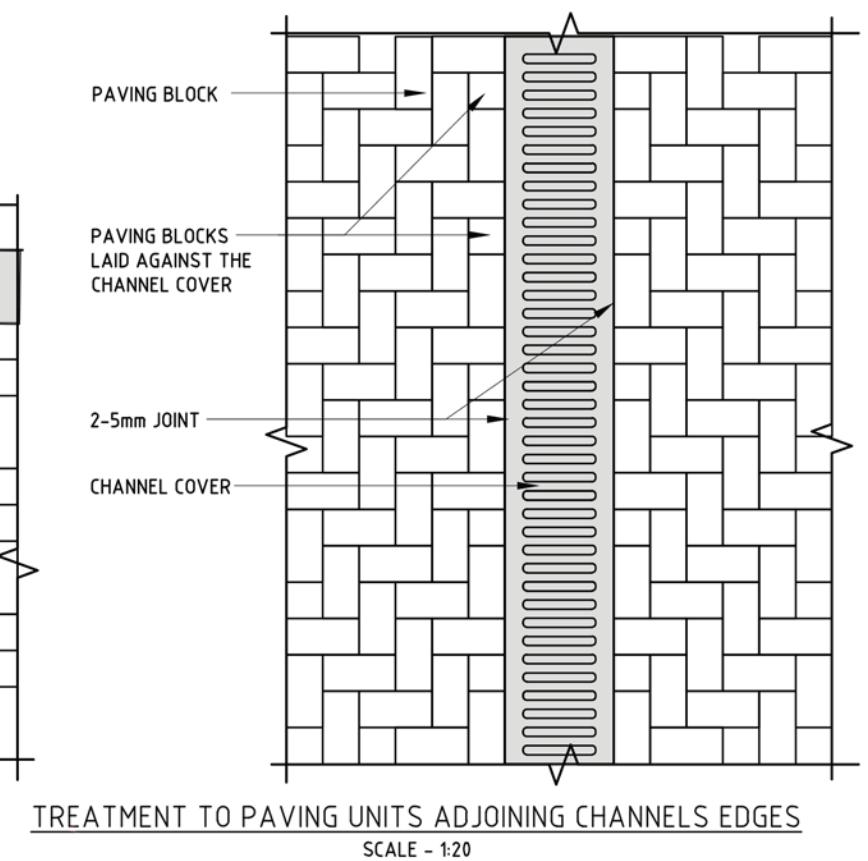
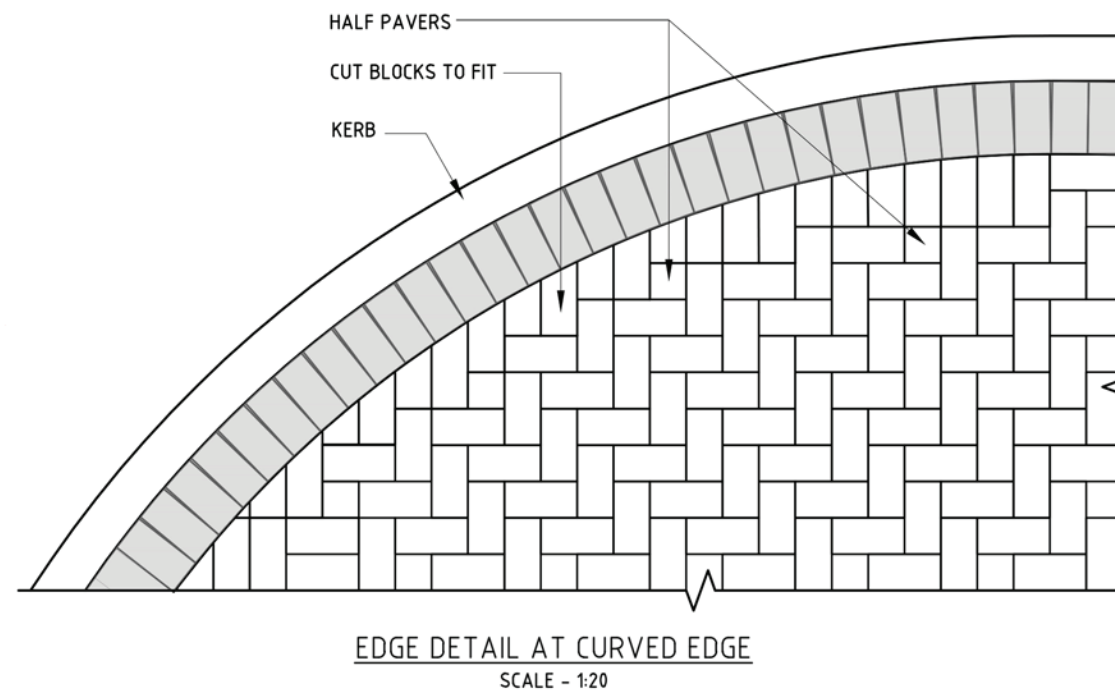
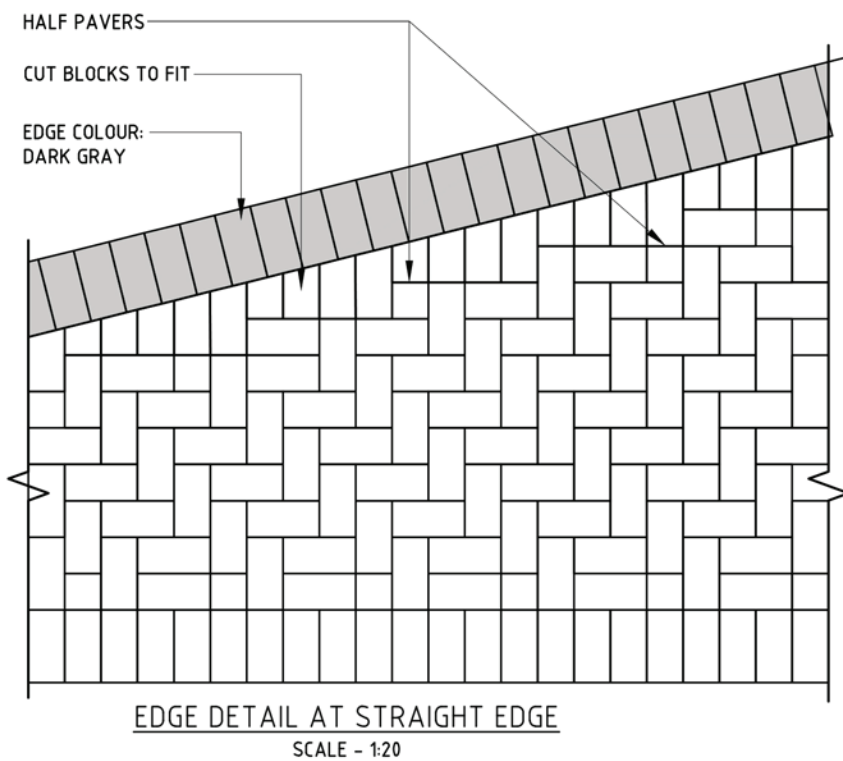
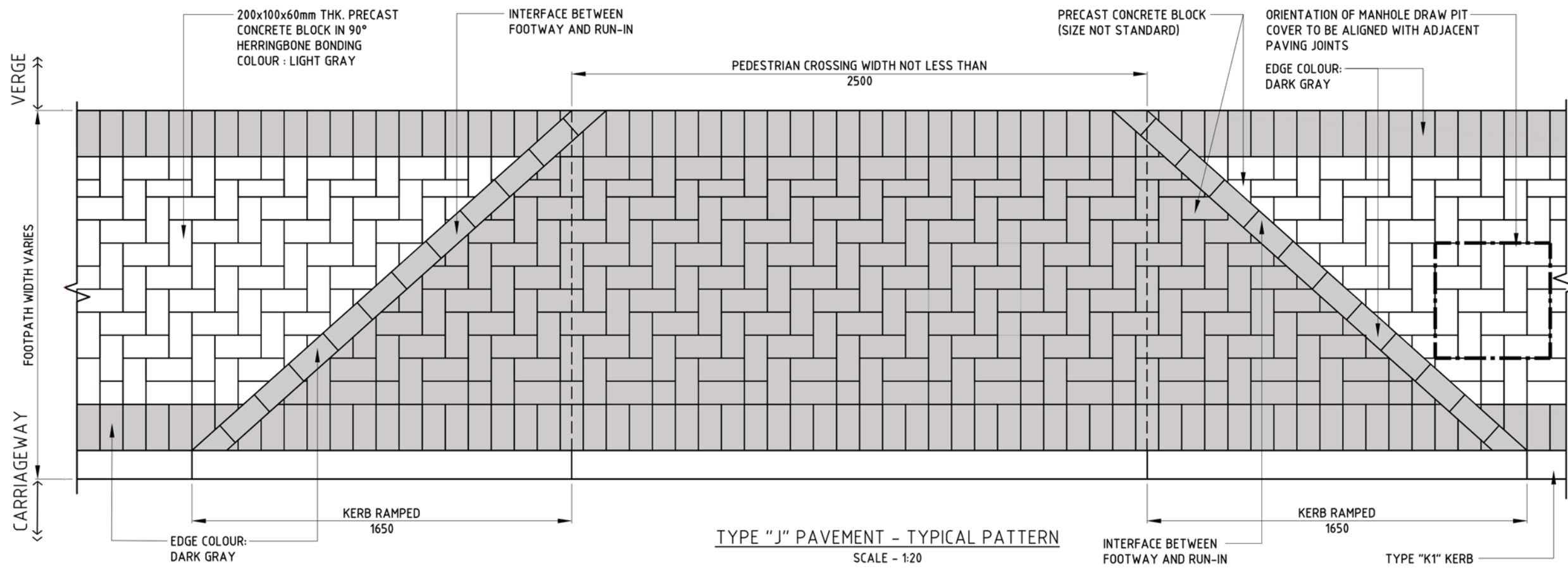
Agreement No. CE 7/2011(HY)

Tuen Mun – Chek Lap Kok Link – Design and Construction

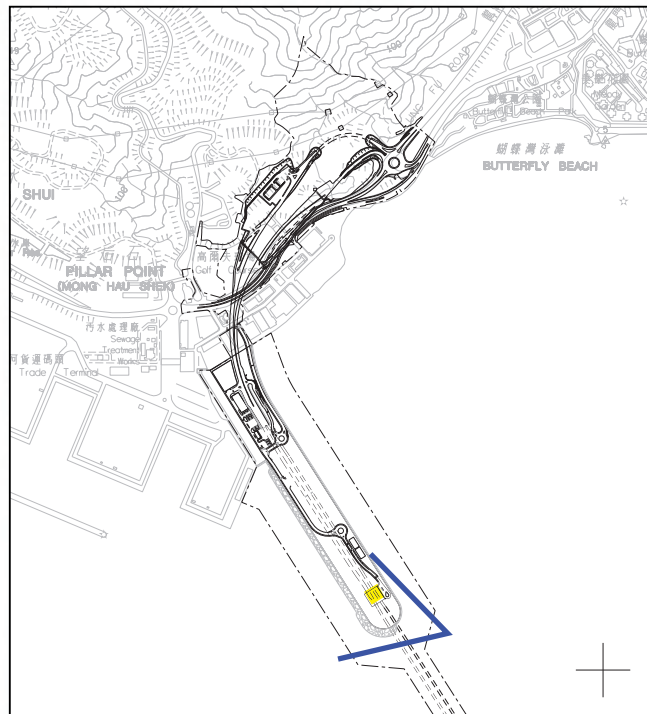
Aesthetic Design of North and South Portal at Landfalls (Contract 2 - HY/2012/08)

Drawing No: Figure 3.1









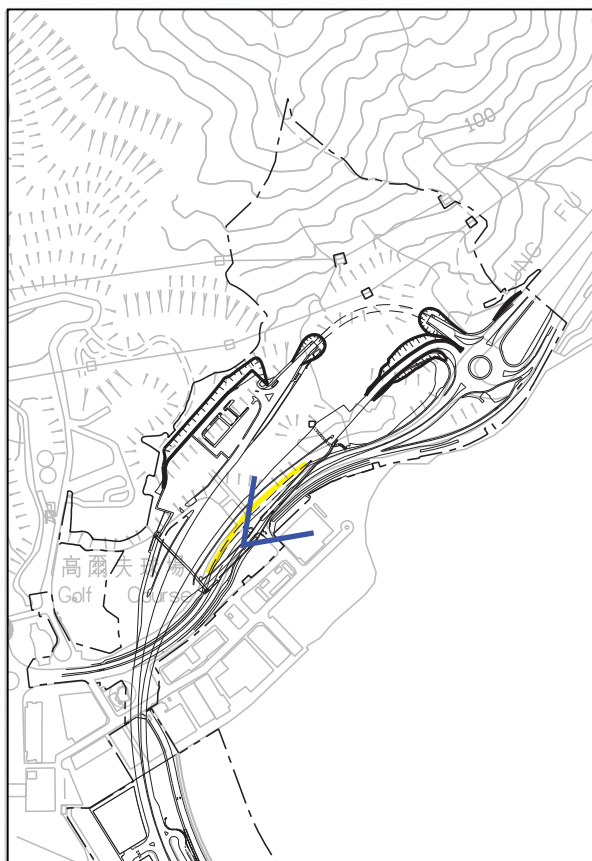
Key Plan



(reference to Aesthetic Design Submission Stage 2)

\*Artistic Impression





Key Plan



Vitreous Enamel (VE) Panel

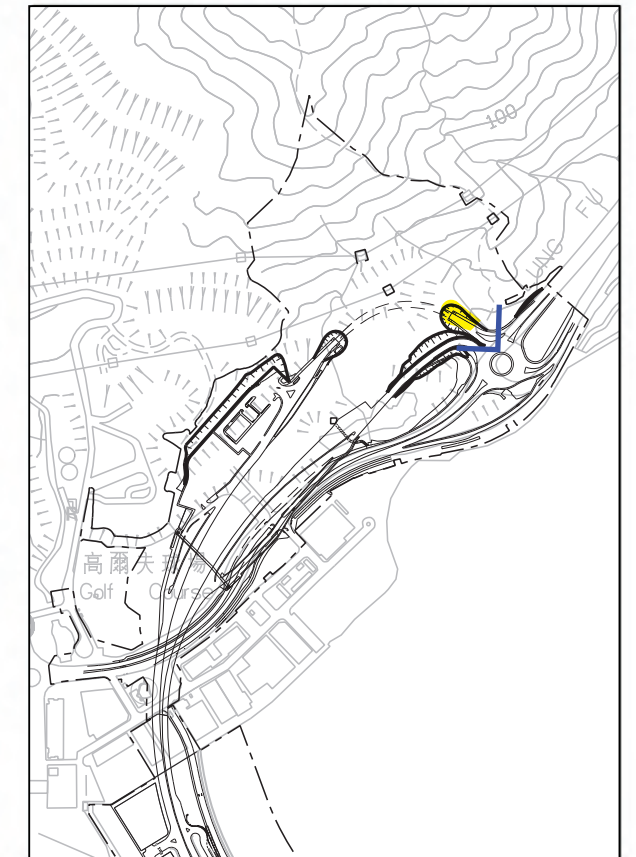


(reference to ACABAS 410th meeting)

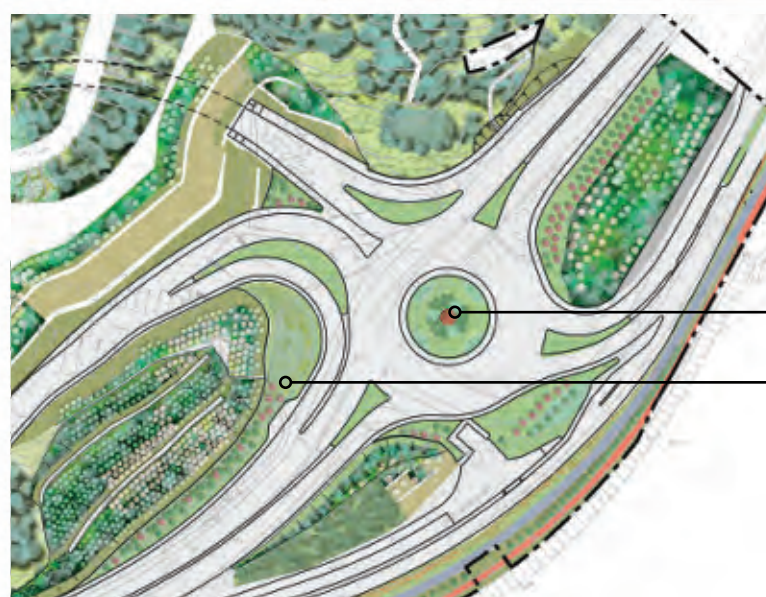




(reference to ACABAS 415th meeting)



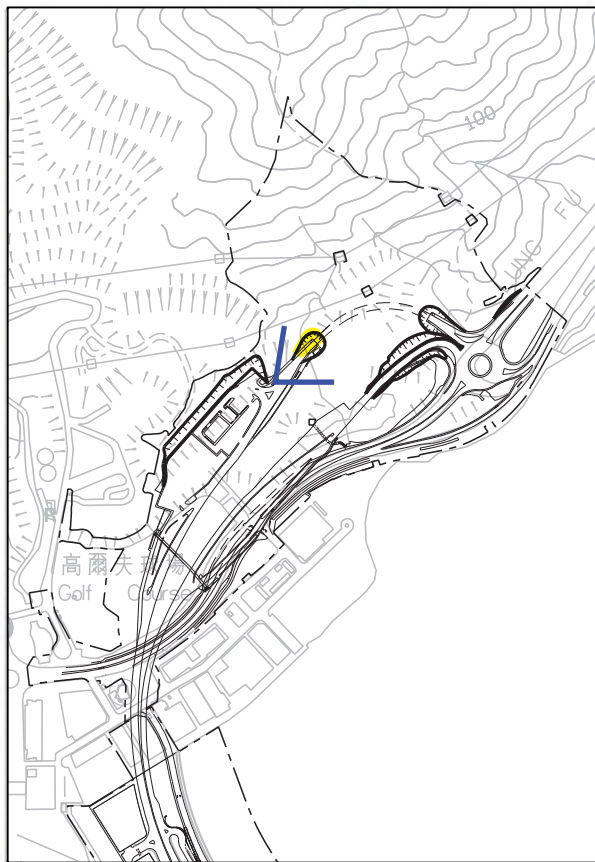
Key Plan



*Delonix regia* 鳳凰木

*Tabebuia impetiginosa* 風鈴木



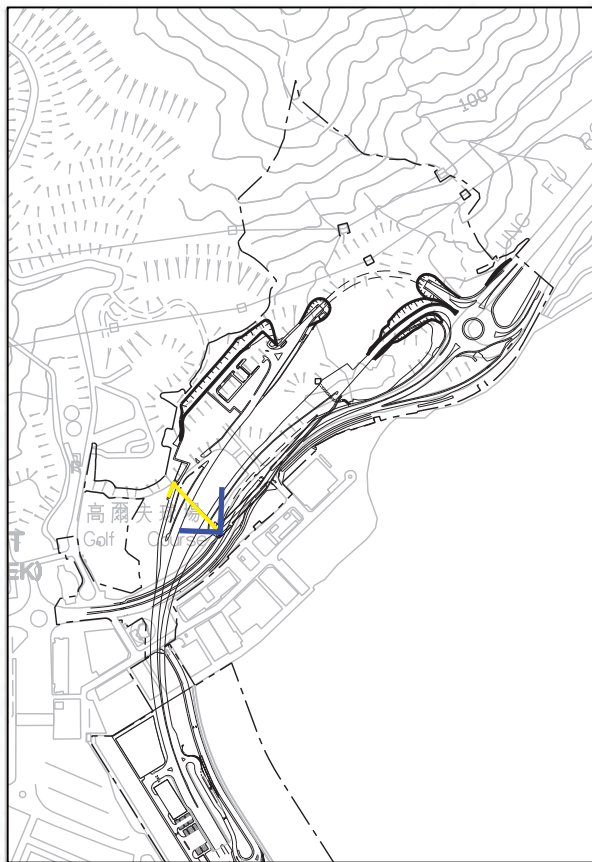


Key Plan



(reference to ACABAS 411th meeting)





Key Plan

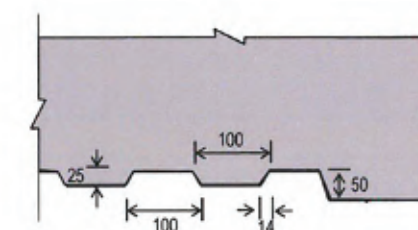
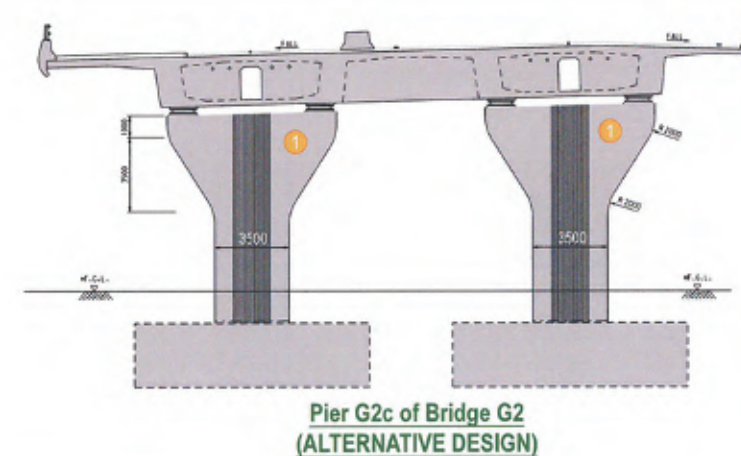
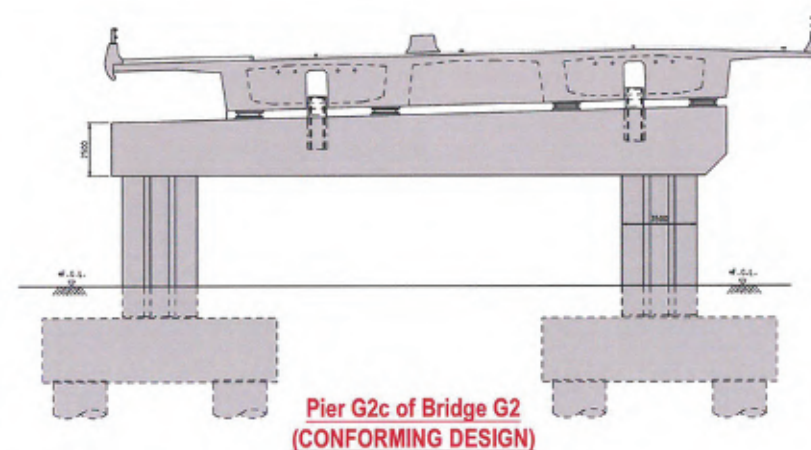
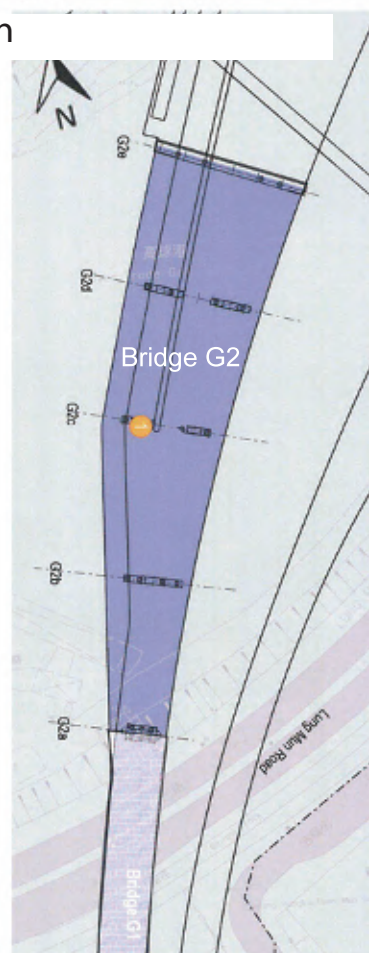


(reference to ACABAS 319th meeting)





Key Plan



Pier Finish Details  
(Same as other piers of G2 in the approved Conforming Design)

Bridge G2  
(CONFORMING DESIGN)



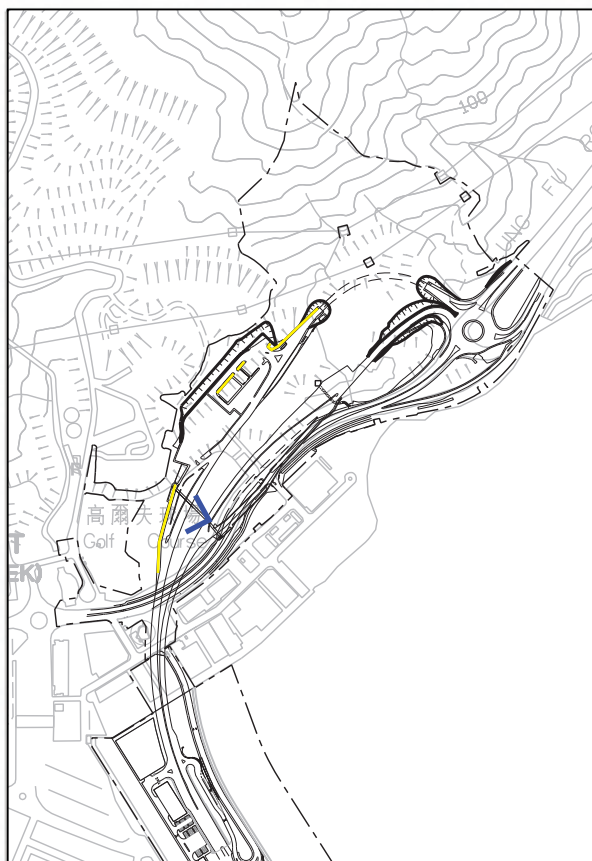
Bridge G2  
(ALTERNATIVE DESIGN)

- Aesthetic Improvements
- Higher headroom
  - Reduce bulkiness of the deck



(reference to ACABAS 367th meeting)





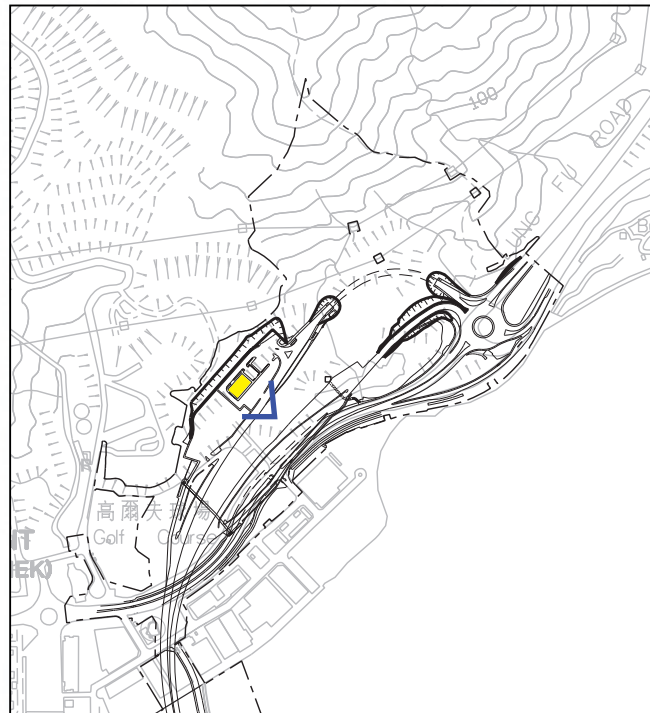
Key Plan



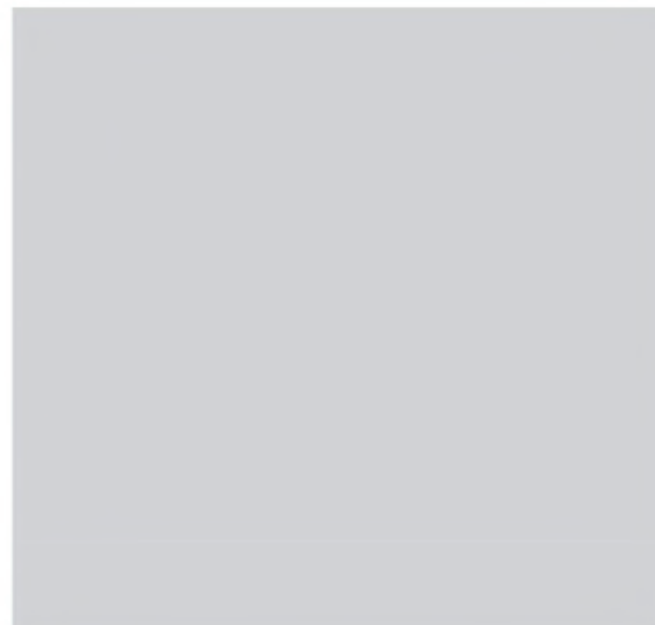
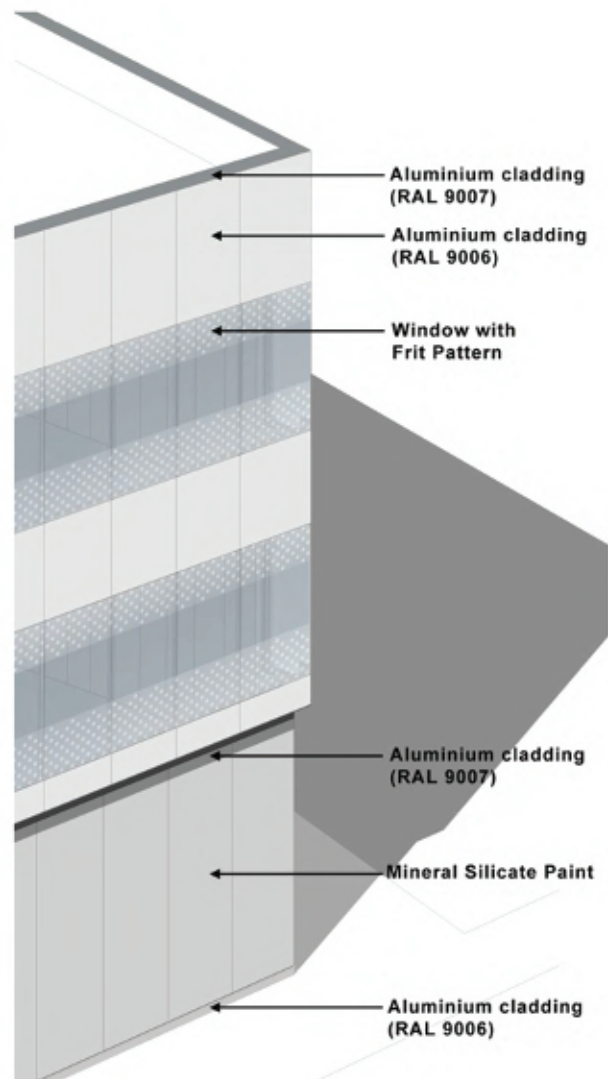
Paving bands in rhythm  
dark grey and light grey pattern



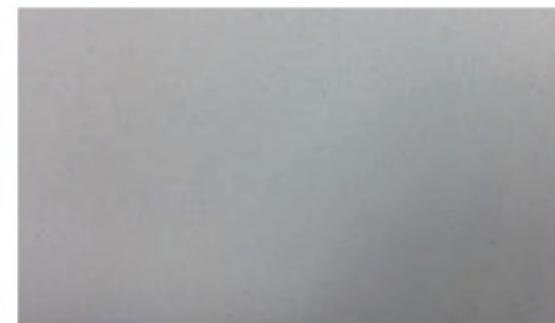




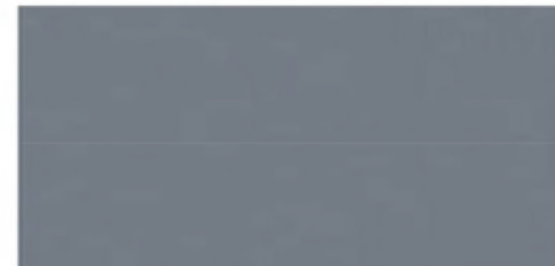
Key Plan



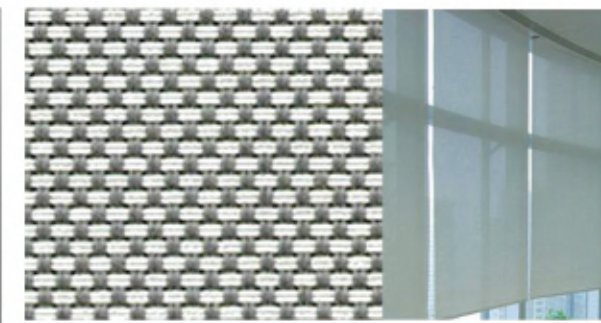
Aluminium Cladding (RAL9006)



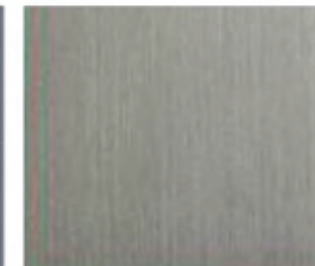
Mineral Silicate Paint



Aluminium Cladding (RAL9007)



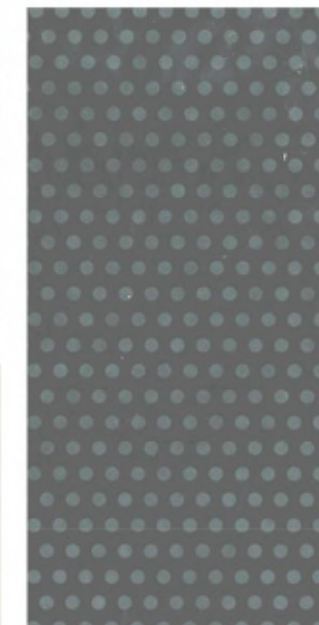
Vertical Blind



Stainless Steel in Satin Finish



Roof Floor Tiles



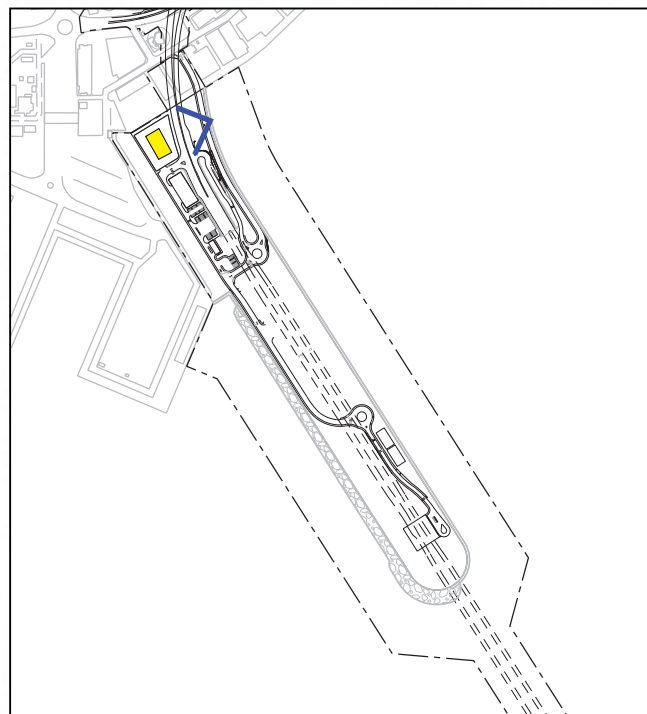
Windows with Frit Pattern



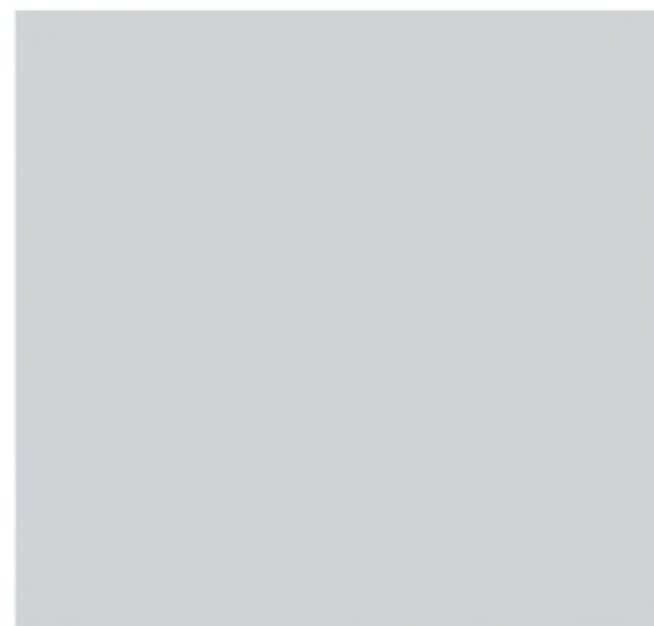
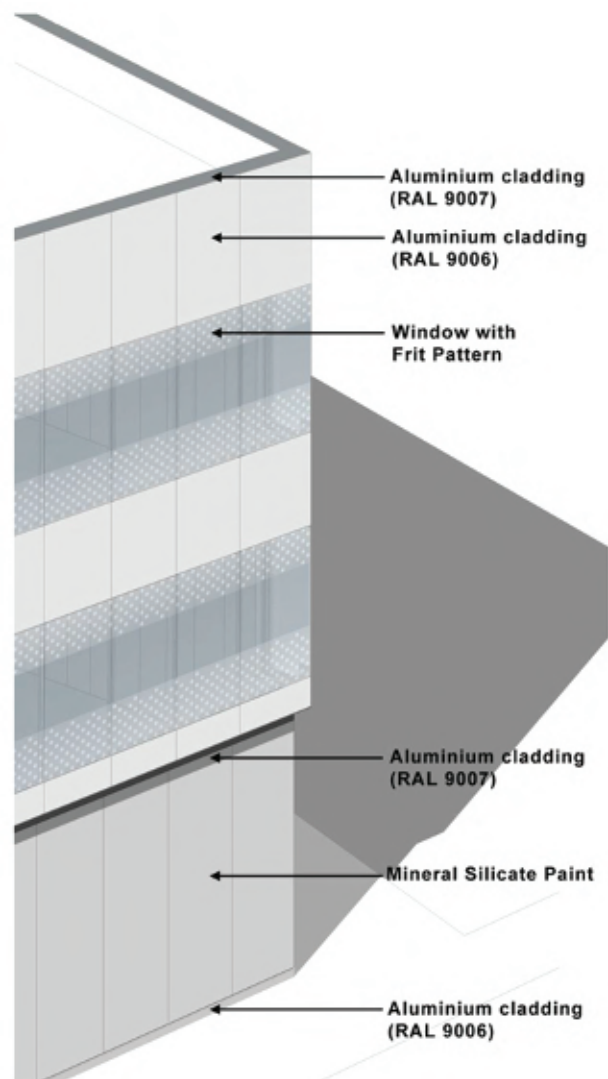
\*Artistic Impression

(reference to Aesthetic Design Submission Stage 2)

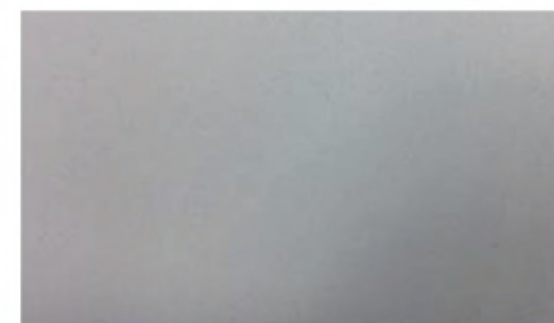




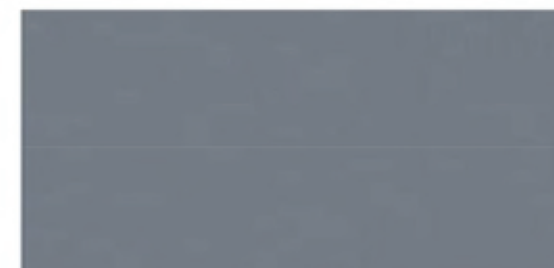
Key Plan



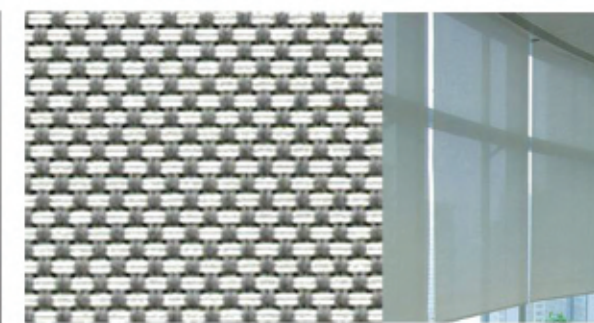
Aluminium Cladding (RAL9006)



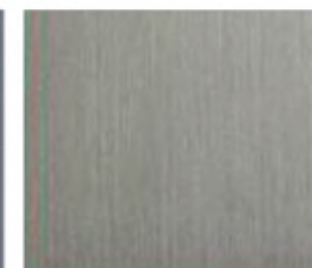
Mineral Silicate Paint



Aluminium Cladding (RAL9007)



Vertical Blind



Stainless Steel in Satin Finish



Roof Floor Tiles



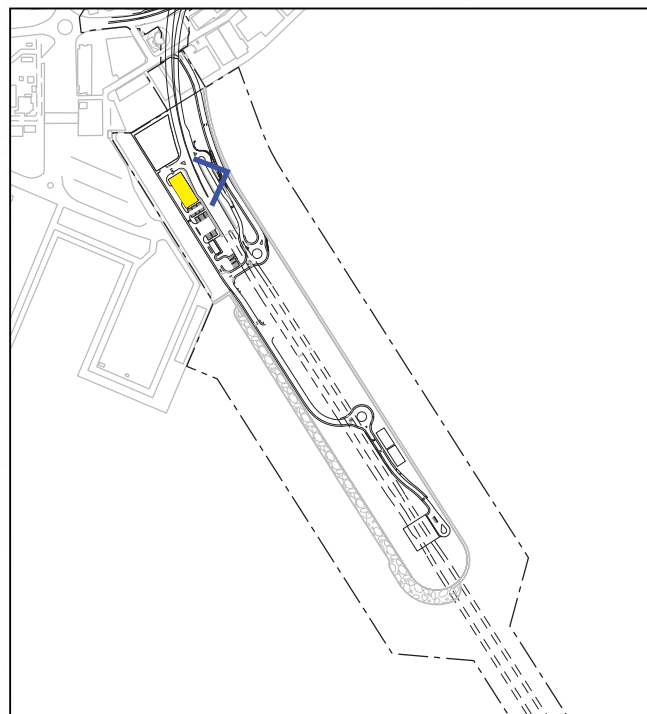
Windows with Frit Pattern



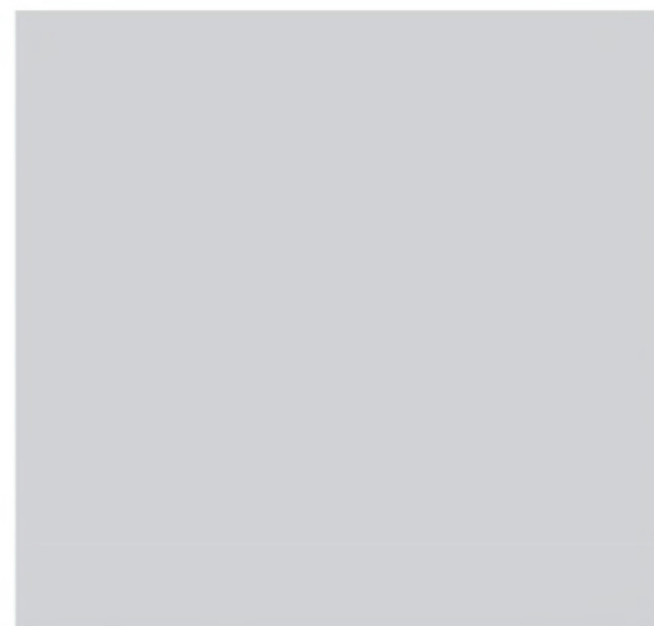
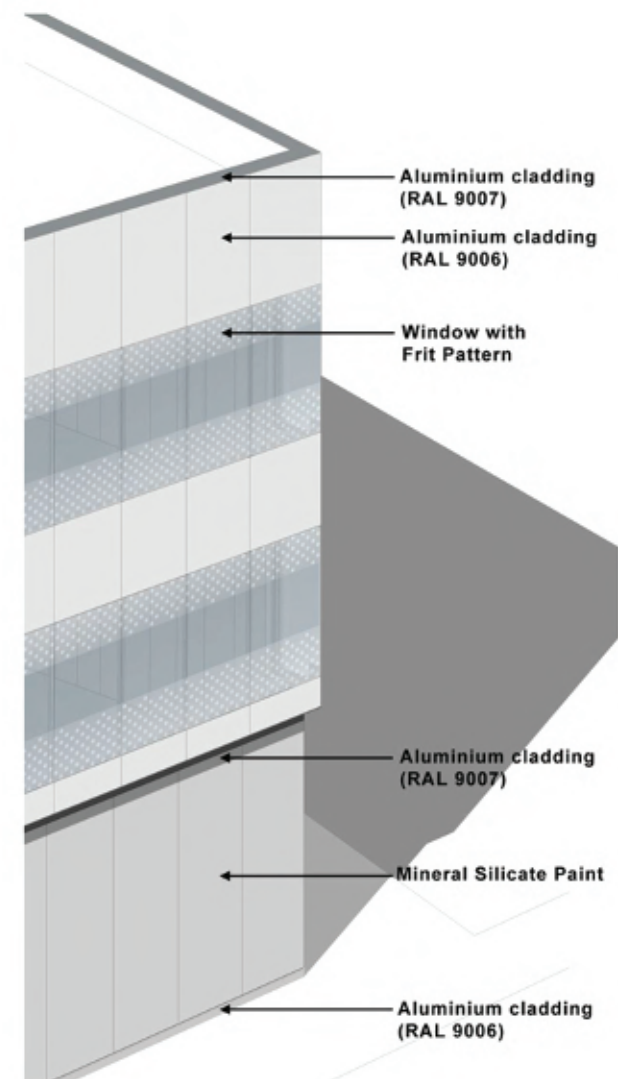
(reference to Aesthetic Design Submission Stage 2)

\*Artistic Impression

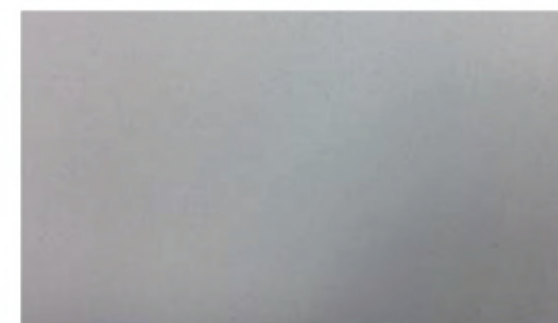




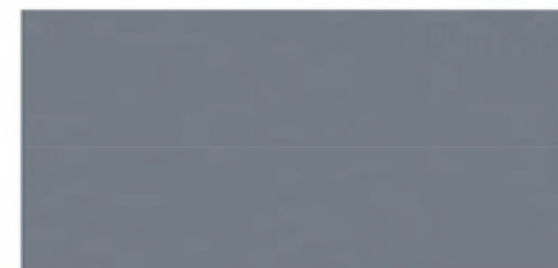
Key Plan



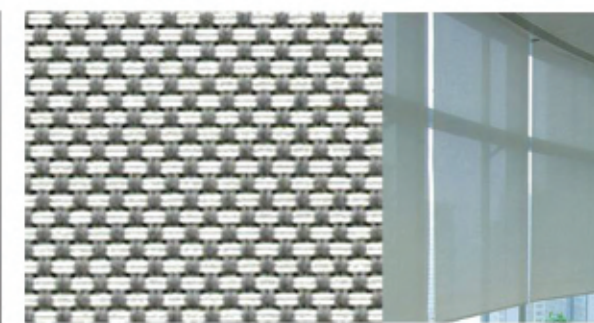
Aluminium Cladding (RAL9006)



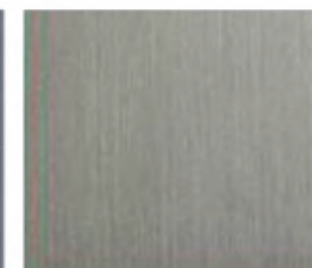
Mineral Silicate Paint



Aluminium Cladding (RAL9007)



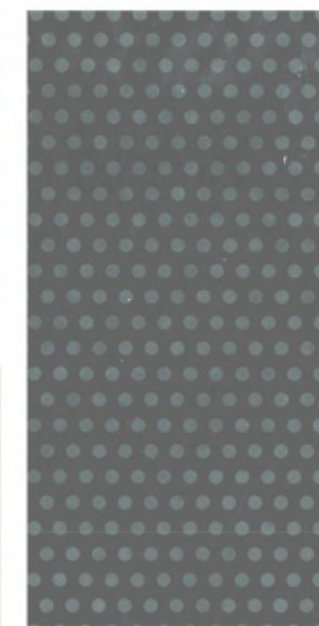
Vertical Blind



Stainless Steel in Satin Finish



Roof Floor Tiles

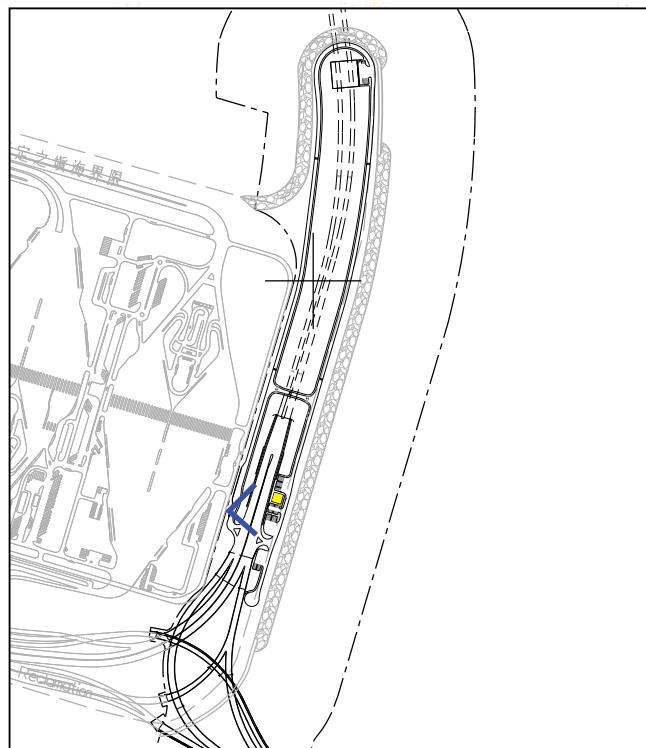


Windows with Frit Pattern

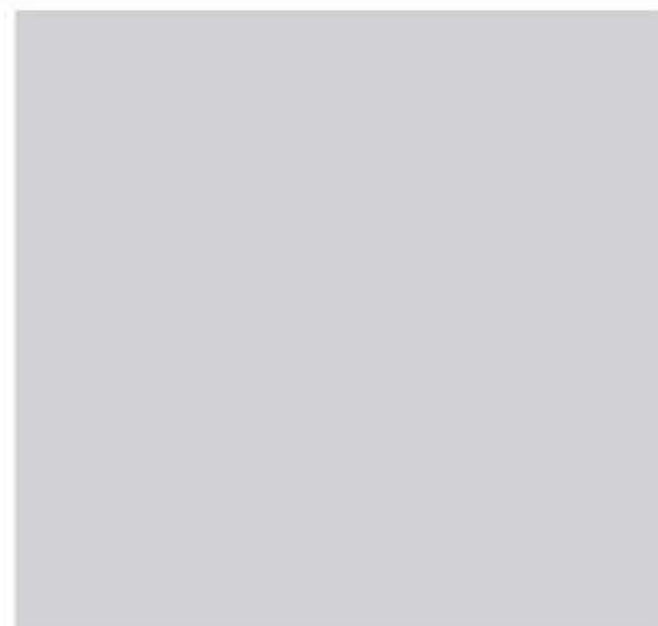
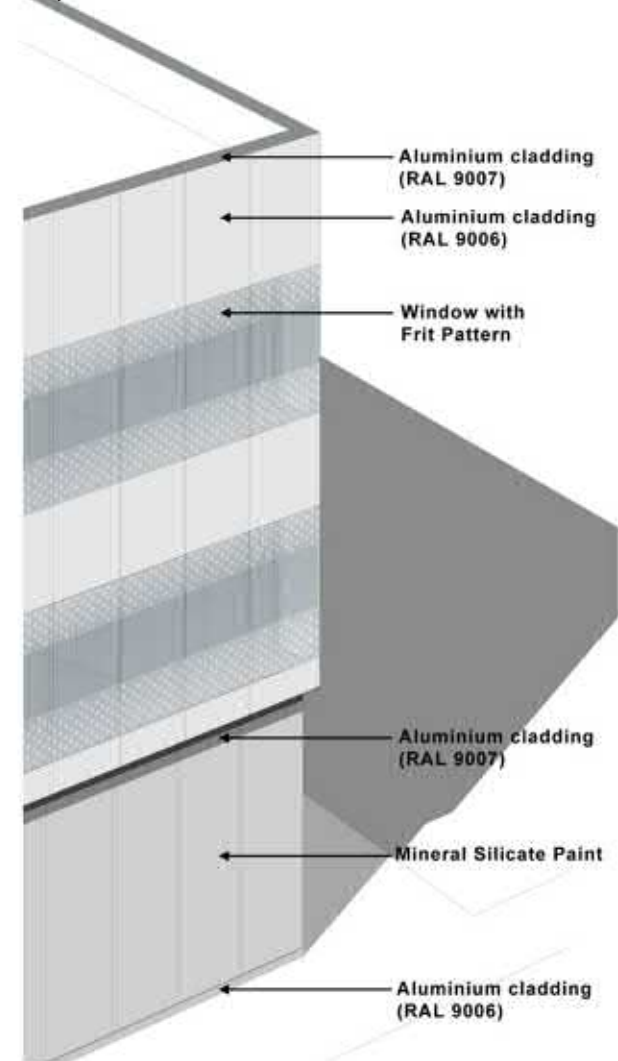


\*Artistic Impression





Key Plan



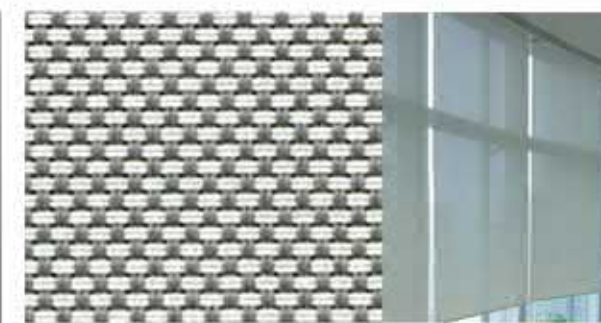
Aluminium Cladding (RAL9006)



Mineral Silicate Paint



Aluminium Cladding (RAL9007)



Vertical Blind



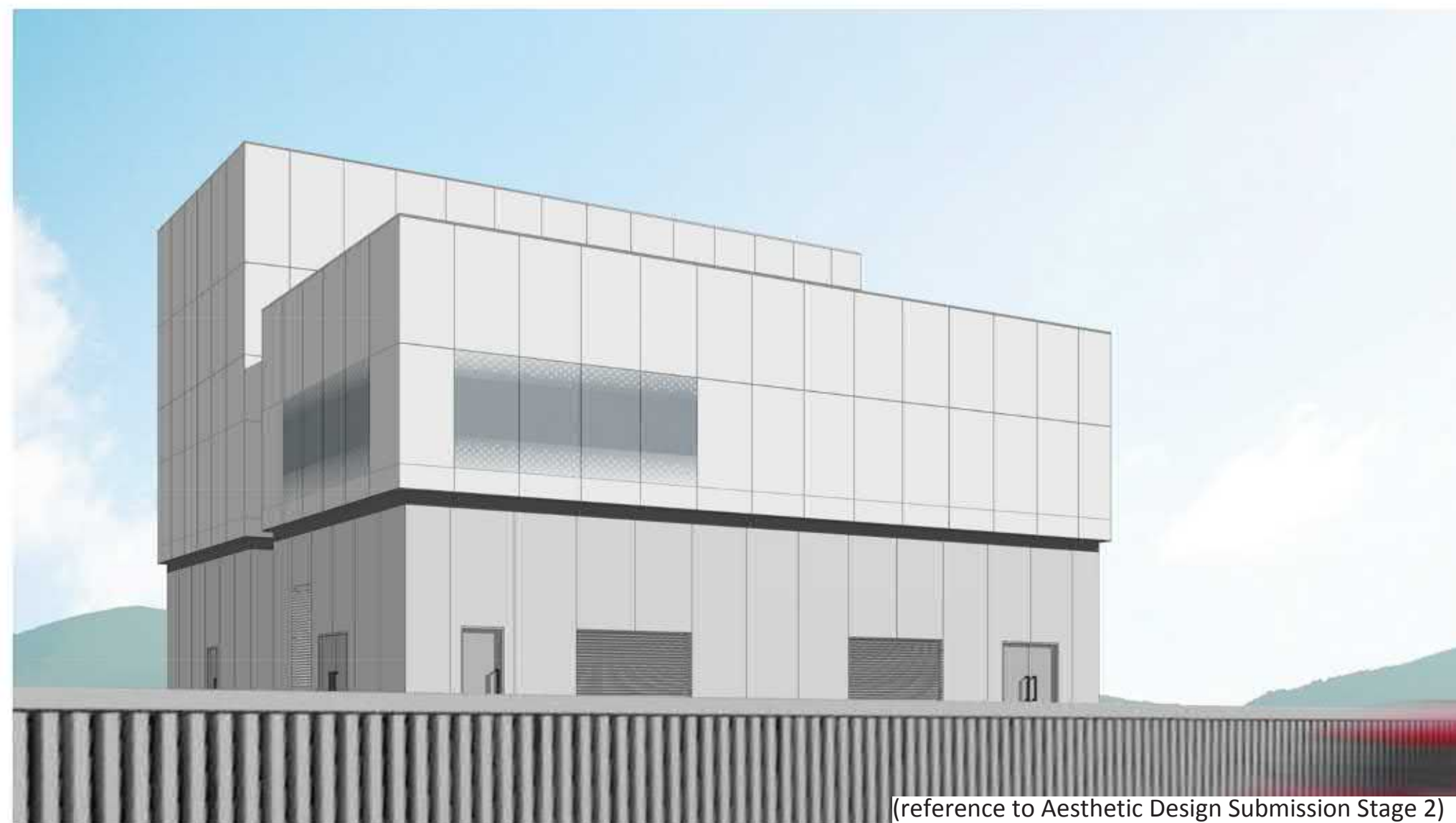
Stainless Steel in Satin Finish



Roof Floor Tiles

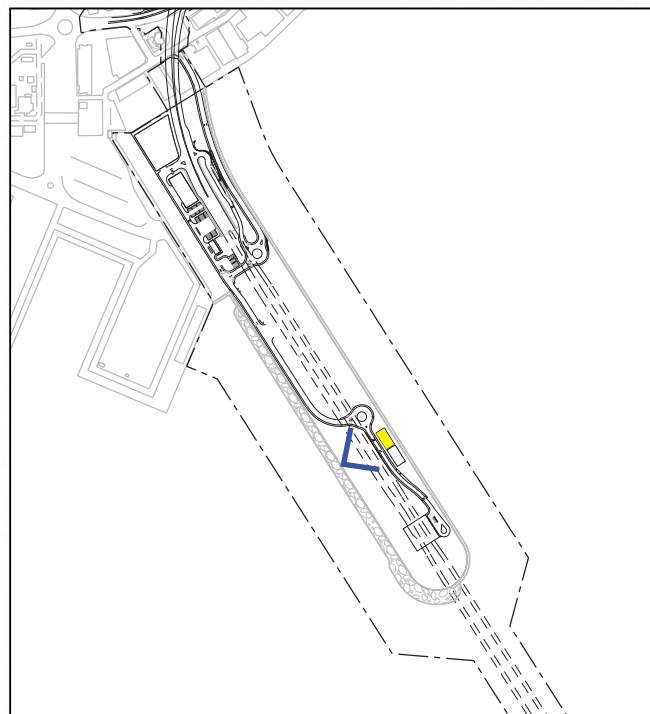


Windows with Frit Pattern

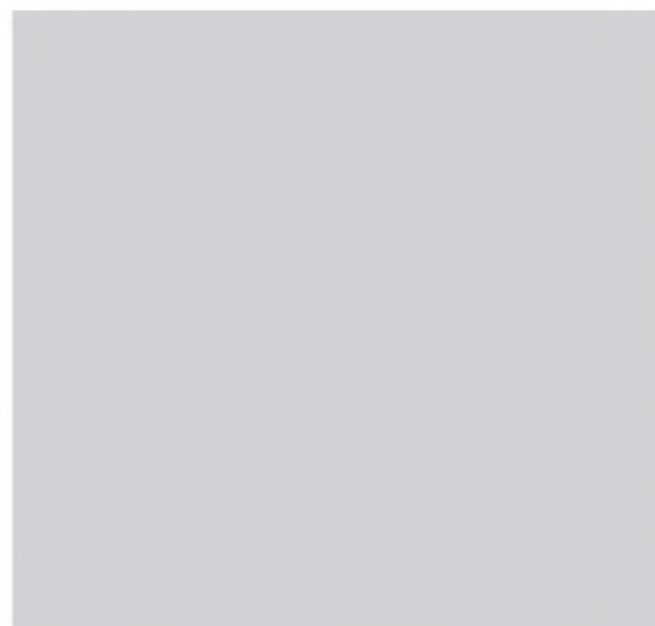
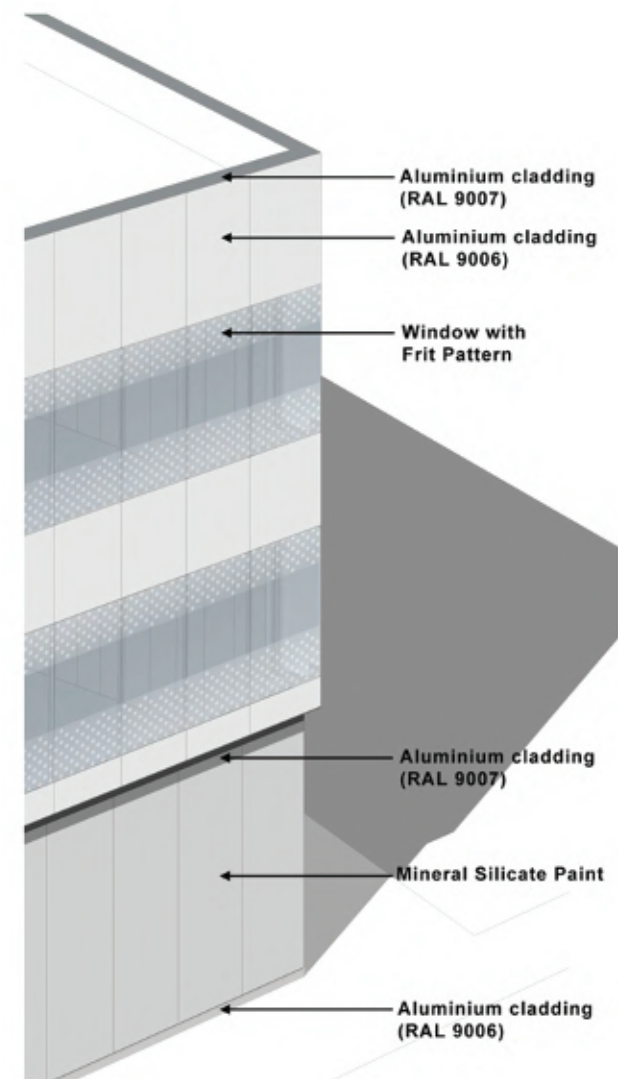


(reference to Aesthetic Design Submission Stage 2)

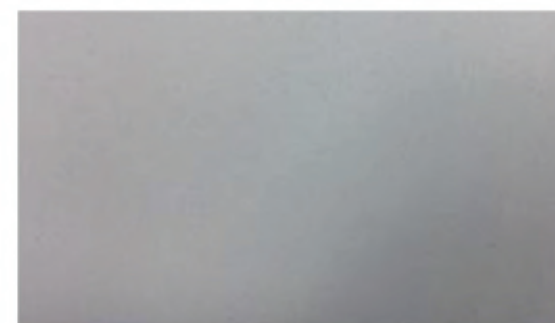




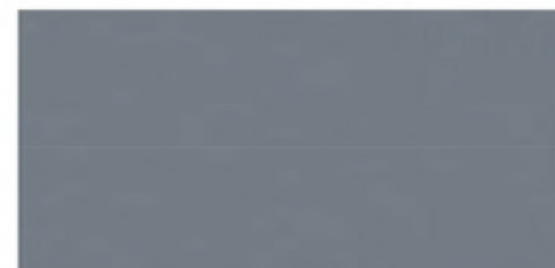
Key Plan



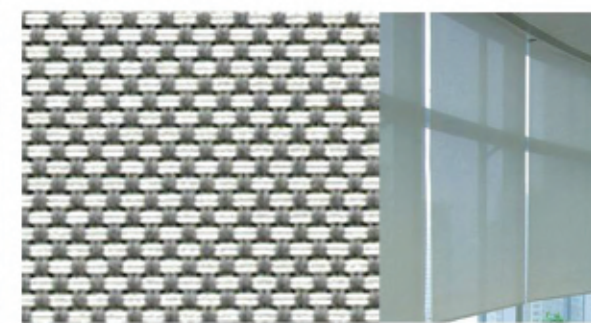
Aluminium Cladding (RAL9006)



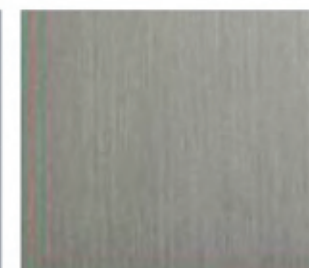
Mineral Silicate Paint



Aluminium Cladding (RAL9007)



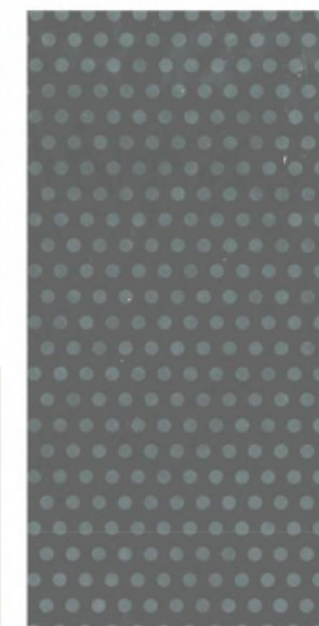
Vertical Blind



Stainless Steel in Satin Finish



Roof Floor Tiles



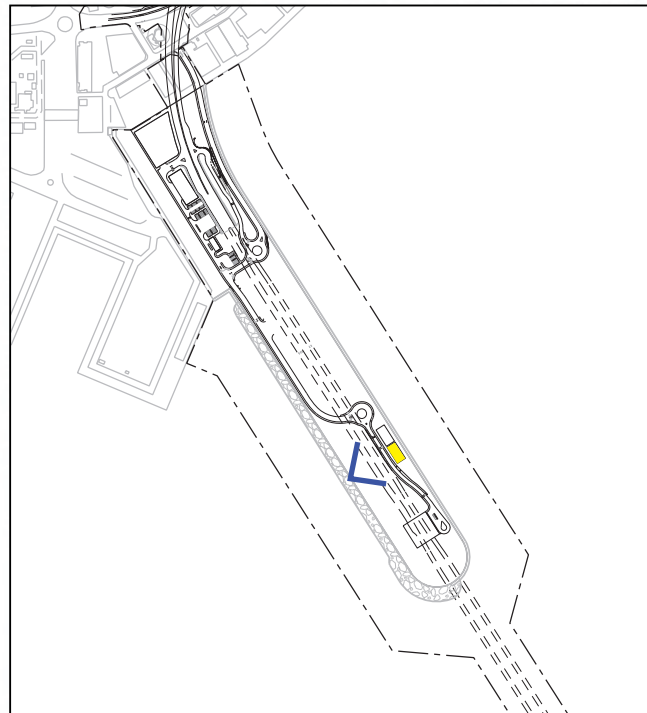
Windows with Frit Pattern



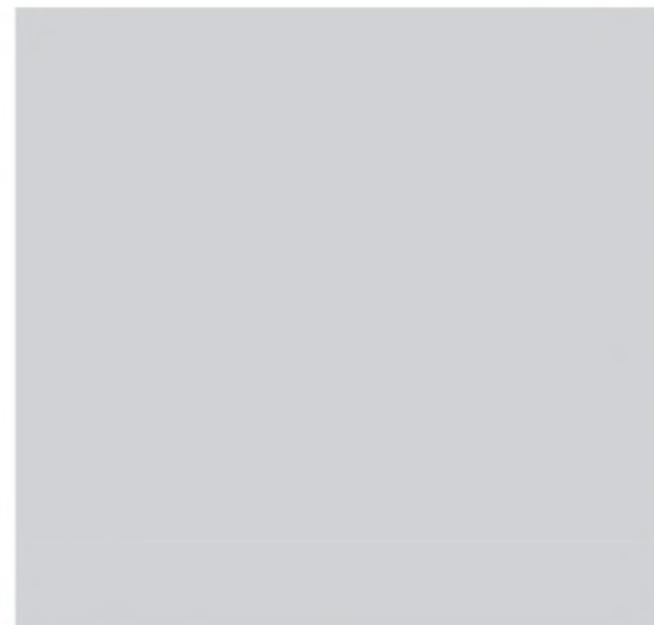
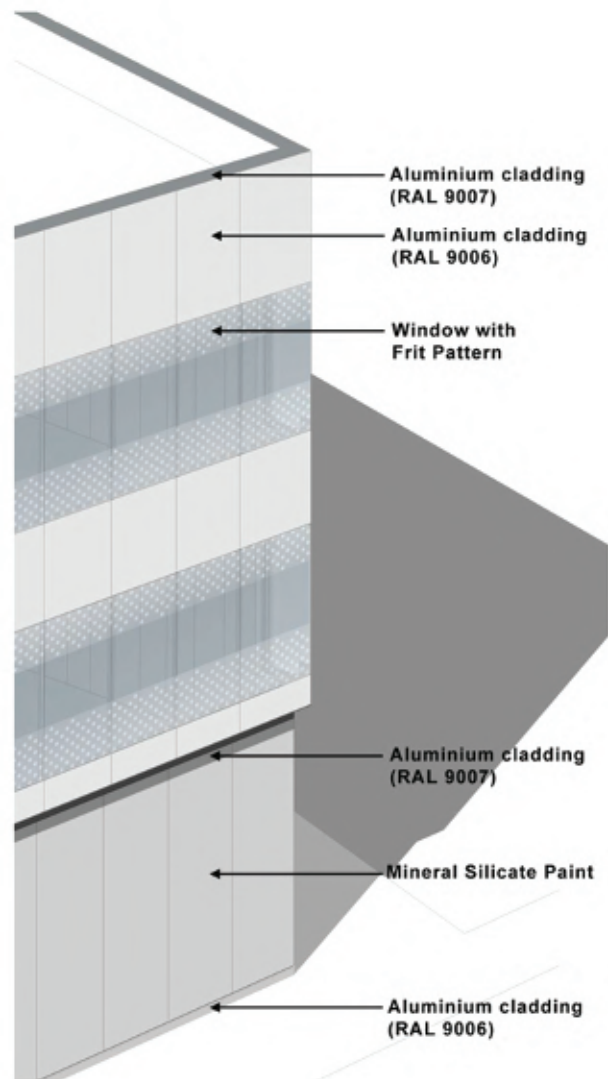
\*Artistic Impression

(reference to Aesthetic Design Submission Stage 2)

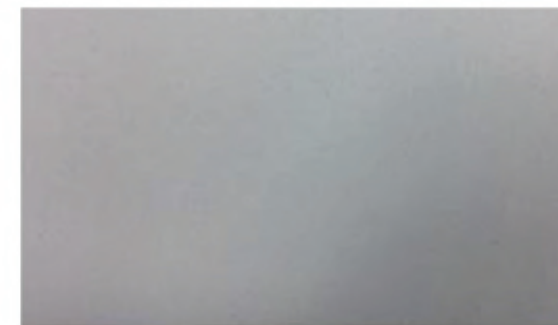




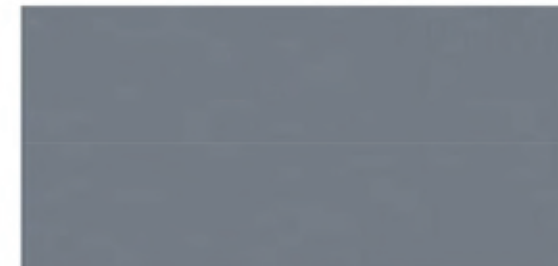
Key Plan



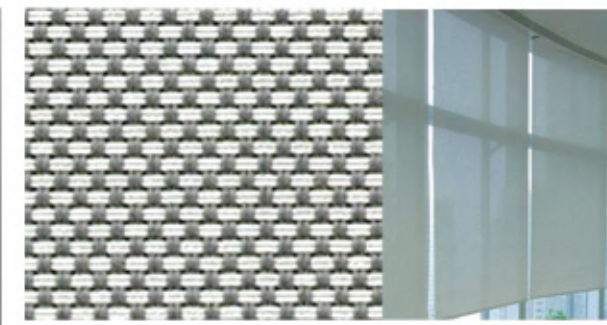
Aluminium Cladding (RAL9006)



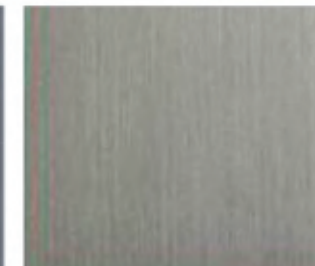
Mineral Silicate Paint



Aluminium Cladding (RAL9007)



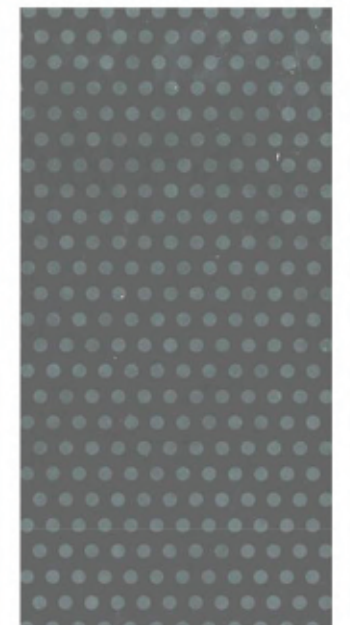
Vertical Blind



Stainless Steel in Satin Finish



Roof Floor Tiles



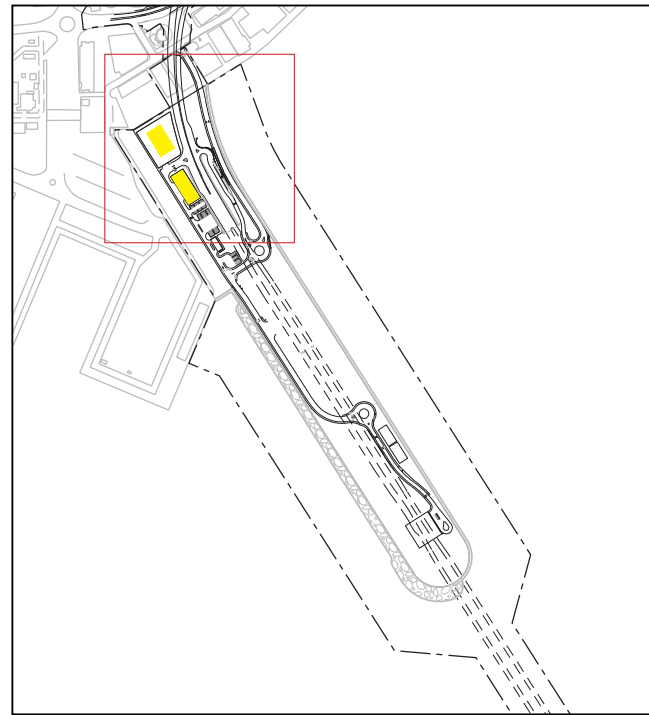
Windows with Frit Pattern



\*Artistic Impression

(reference to Aesthetic Design Submission Stage 2)





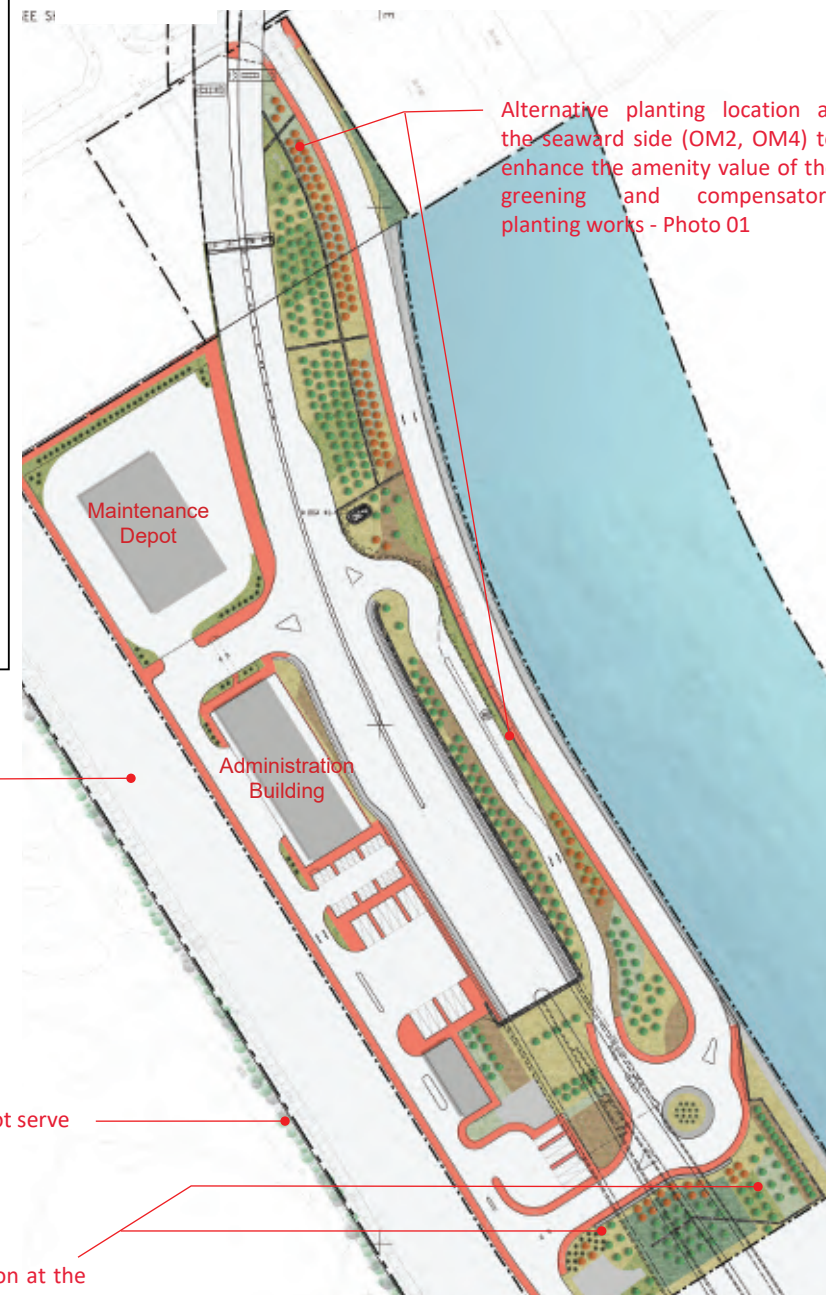
Key Plan

Drainage Reserve and fenced-off area - not accessible to the public and thus diminishing the amenity value of the greening works. Also considered not suitable for implementing long term greening strategy due to uncertain but potential programme of development of the land.

The buffer and structure, ornamental planting works (OM2, OM4) is relocated to the seaward side of the Maintenance Depot and Administration Building for better public enjoyment.

Existing trees at adjacent lot serve as buffer (OM2)

Alternative planting location at the seaward side (OM2, OM4) to enhance the amenity value of the greening and compensatory planting works - Photo 02 and Photo 03



## Buffer Planting and Enhancement of Townscape Quality (OM2, OM4)



Photo 01

Planting near the seaward side which is accessible to the public (i.e. at the eastern side of Maintenance Depot and Administration Building) serves as buffer to the building structures and enhancement to the townscape quality.



Photo 02

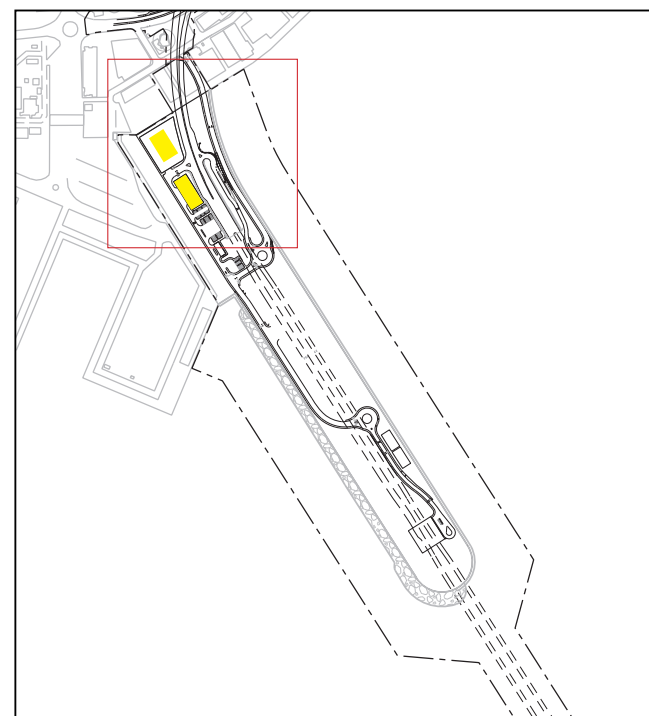
Planting near the seaward side which is accessible to the public serves as buffer to the building structures and enhancement to the townscape quality.



Photo 03

Planting near the seaward side which is accessible to the public serves as buffer to the building structures and enhancement to the townscape quality.



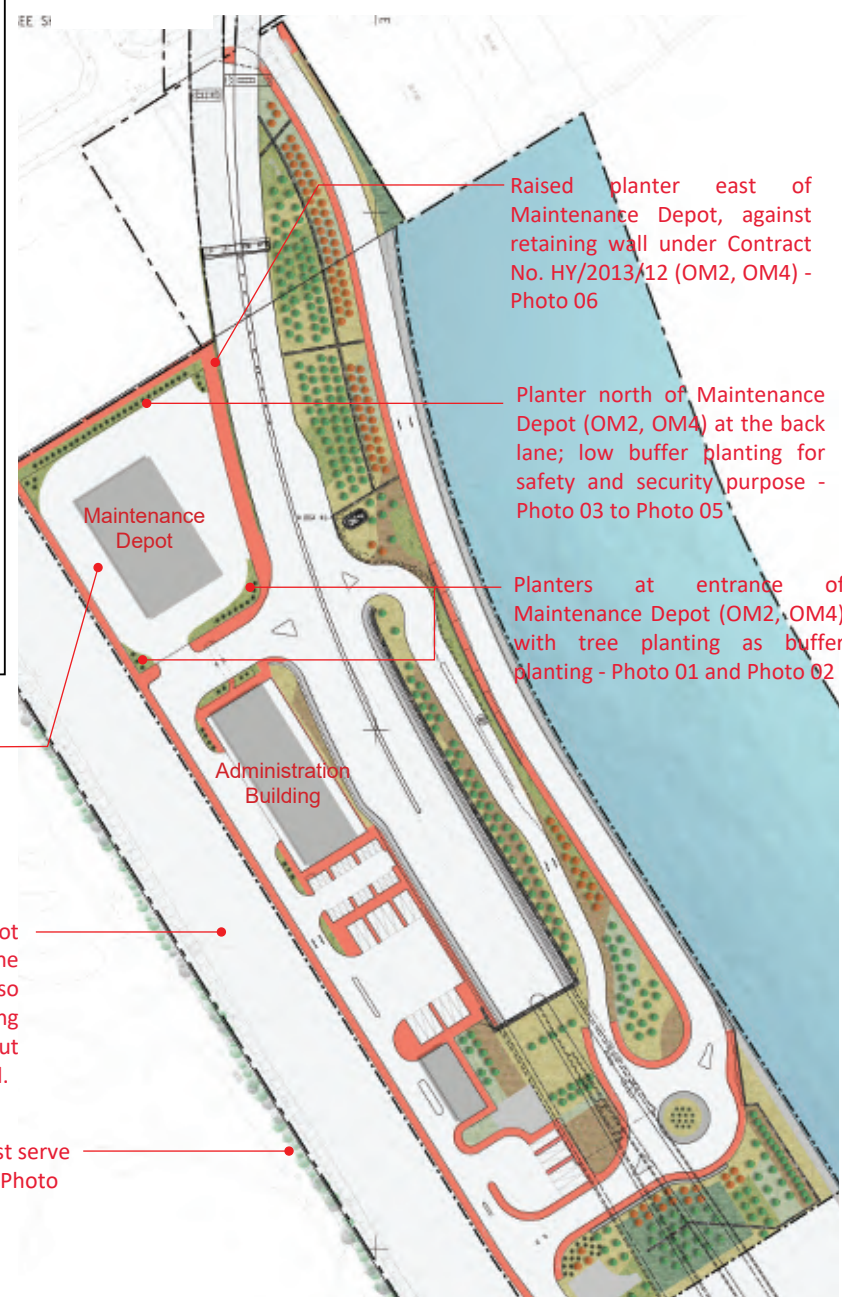


Key Plan

Maintenance Depot with Emergency Vehicular Access (EVA), Training Ground Area, Detention Area, Car parking spaces. The locations and sizes of planters are maximized to avoid obstructing the operational needs of the Maintenance Depot.

Drainage Reserve and fenced-off area - not accessible to the public and thus diminishing the amenity value of the greening works. Also considered not suitable for implementing long term greening strategy due to uncertain but potential programme of development of the land.

Existing trees at adjacent lot serve as buffer (OM2) - Photo 01, Photo 02 and Photo 03



## Buffer and Structure, Ornamental Planting surrounding Maintenance Depot (OM2, OM4)

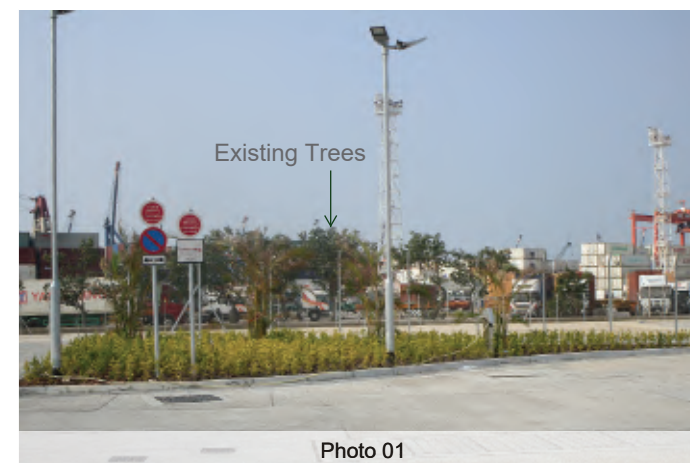


Photo 01



Photo 02



Photo 03



Photo 04



Photo 05



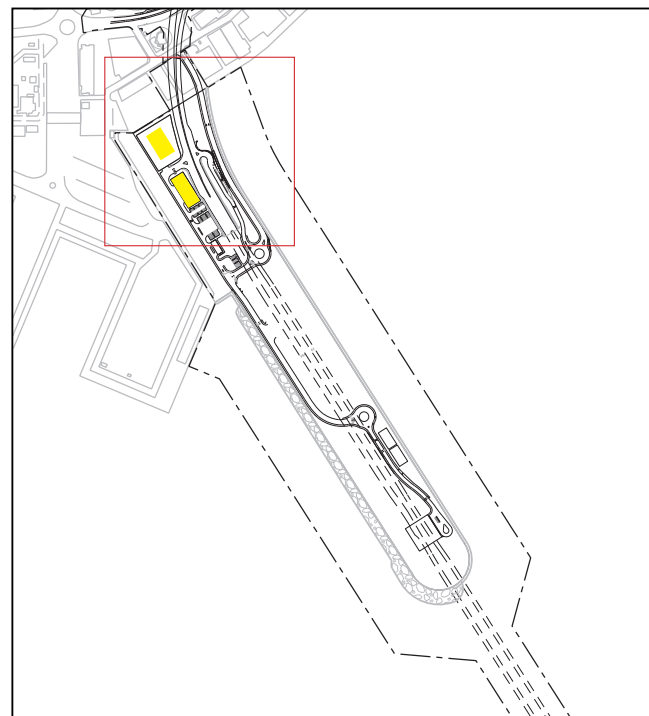
Photo 06

**Photo 01, Photo 02:** Buffer tree planting (OM2) and structure, ornamental planting (OM4) at entrance of Maintenance Depot; locations and sizes of planters are maximized to avoid obstructing the operational needs of the Maintenance Depot. Existing trees at the adjacent lot serves as buffer (OM2).

**Photo 03, Photo 04, Photo 05:** Buffer shrub planting (OM2) and structure, ornamental planting (OM4) at the back lane of Maintenance Depot. The back lane which is a remote area should be kept in open view for safety and security purpose, therefore, low planting is suitable to keep the view open. Locations and sizes of planters are maximized to avoid obstructing the operational needs of the Maintenance Depot.

**Photo 06:** Raised planter for shrub planting against retaining wall of the viaduct at the east of Maintenance Depot (OM2, OM4) under Contract No. HY/2013/12, serves as buffer to the engineering structures and enhancement to the townscape quality.



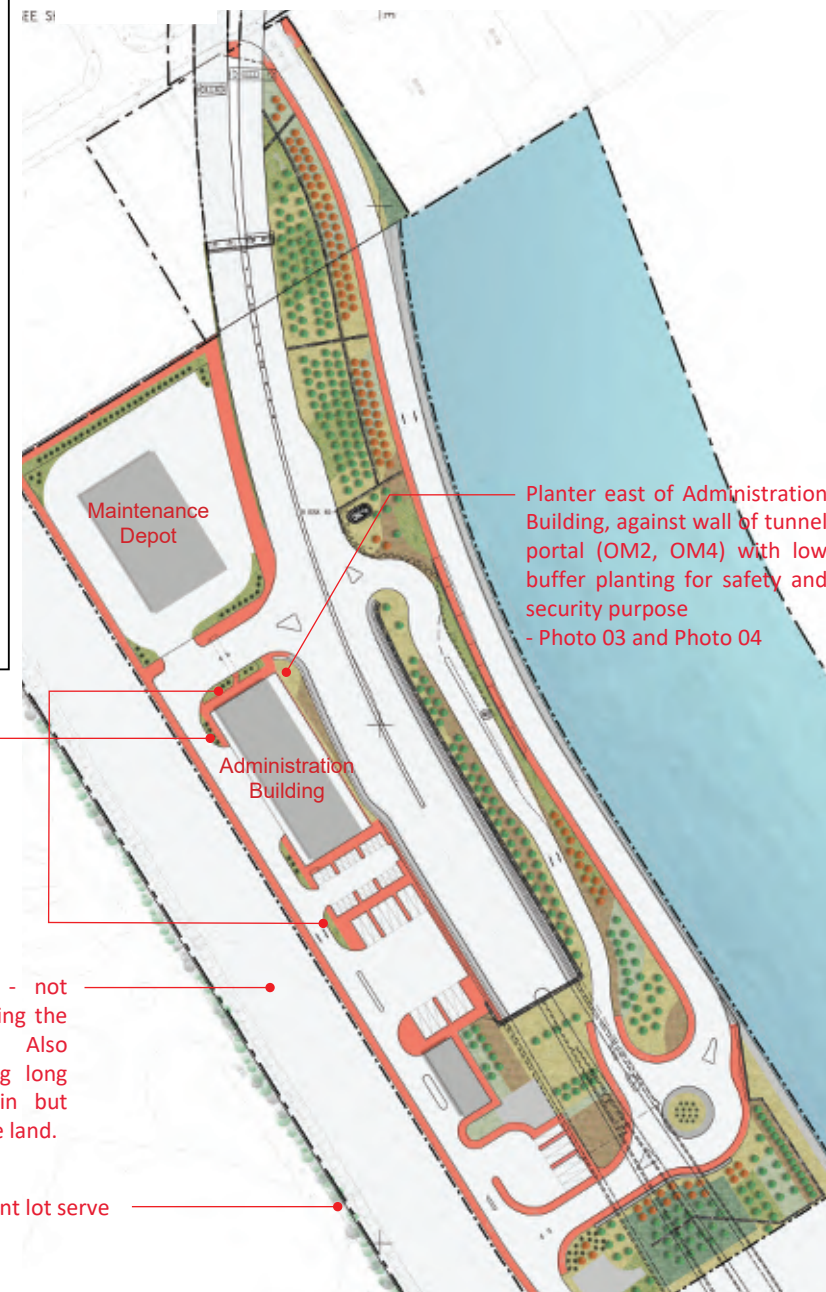


### Key Plan

Planters at Administration Building; locations and sizes of planters are maximized to avoid obstructing the operational and security needs of the Administration Building. Buffer and structure low shrub planting (OM2, OM4) is designed at the roadside planters to avoid obstructing sightlines for safe driving at turning corners. - Photo 01 and Photo 02

Drainage Reserve and fenced-off area - not accessible to the public and thus diminishing the amenity value of the greening works. Also considered not suitable for implementing long term greening strategy due to uncertain but potential programme of development of the land.

Existing trees at adjacent lot serve as buffer (OM2)



### Buffer and Structure, Ornamental Planting surrounding Administration Building (OM2, OM4)



Photo 01



Photo 02



Photo 03

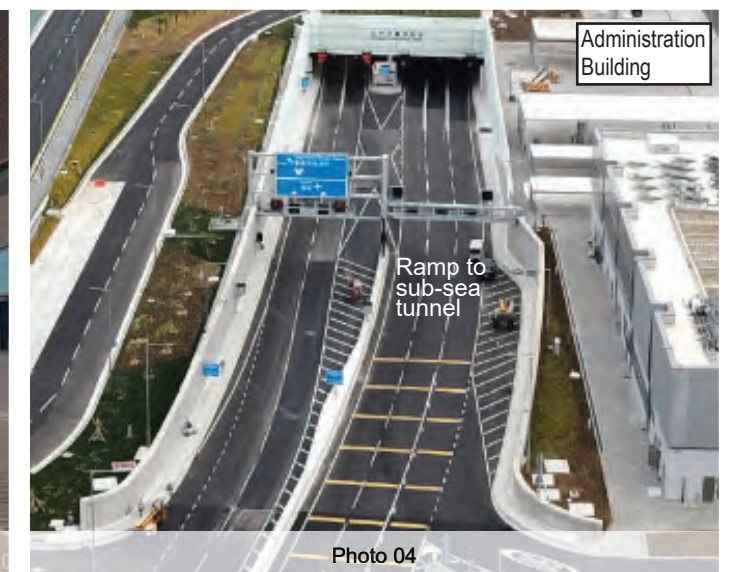
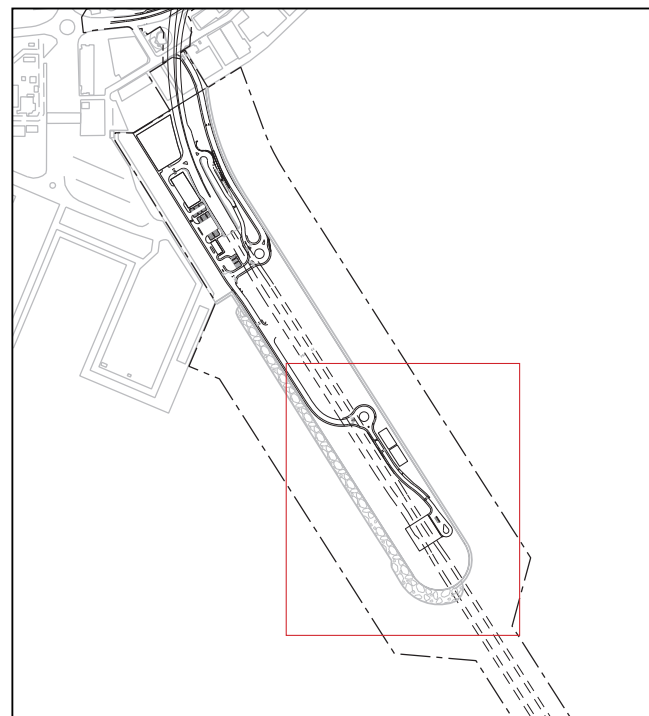


Photo 04

**Photo 01, Photo 02:** Planters at Administration Building serve as buffer to the engineering structures and enhancement to the townscape quality (OM2, OM4). Locations and sizes of planters are maximized to avoid obstructing the operational and security needs of the Administration Building. Buffer and structure, low ornamental shrub planting is purposely designed at the roadside planters to avoid obstructing sightlines for safe driving at turning corners.

**Photo 03, Photo 04:** Planters at Administration Building serve as buffer to the engineering structures and enhancement to the townscape quality (OM2, OM4). Locations and sizes of planters are maximized to avoid obstructing the operational and security needs of the Administration Building. Buffer and structure, low ornamental shrub planting is purposely designed at the planter against the wall of tunnel portal to avoid leaves and twigs blowing over and falling to the ramp of the sub-sea tunnel causing safety hazard to road users and to allow the essential open view from the adjacent Administration Building to monitor the road condition at the entrance/exit of the sub-sea tunnel by the tunnel operator to ensure smooth and safe operation.



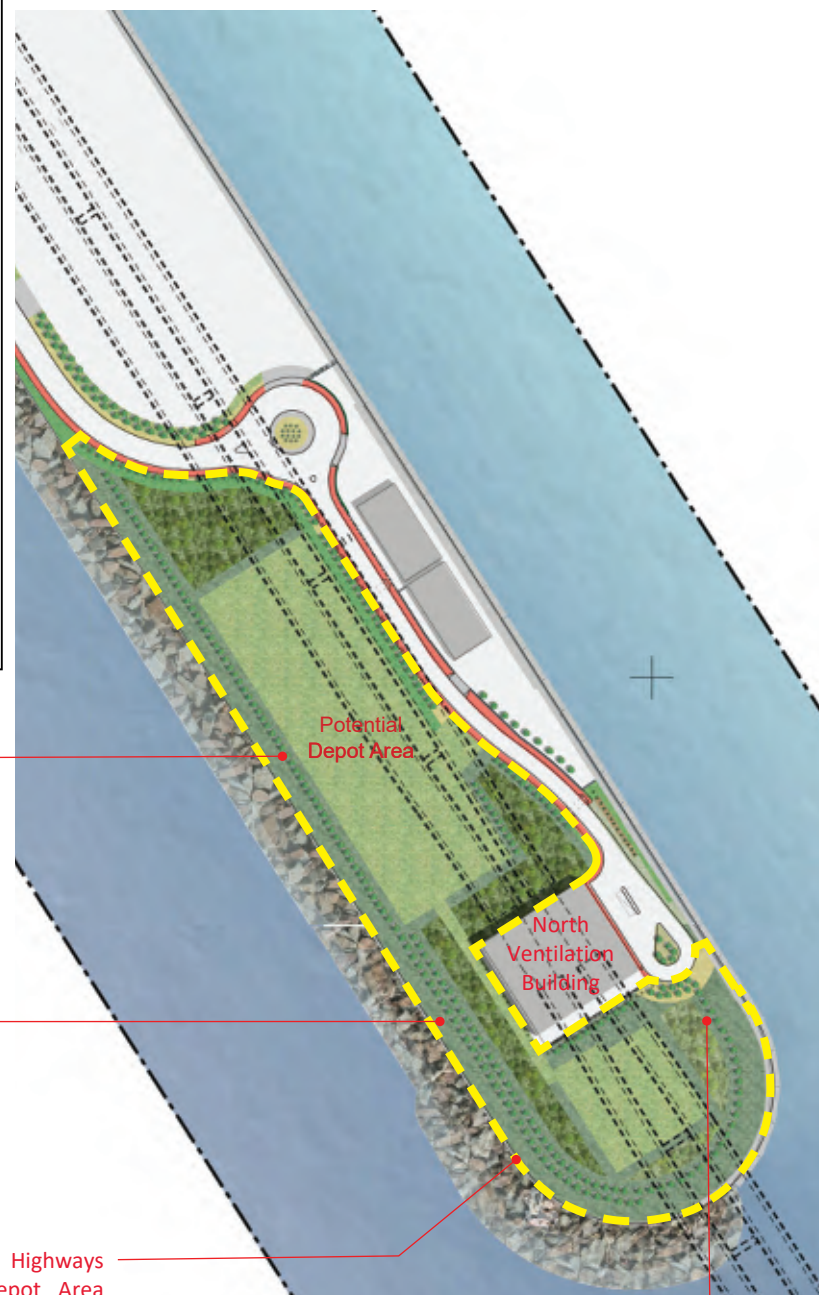


Key Plan

Tree planting set at 10m from the sloping seawall and 15m from the vertical seawall to address CEDD's concern on planting close to the seawall, and the locations of tree planting (OM2, OM4) within the Potential Highways Department Depot Area are maximized to avoid obstructing the operational needs of the Depot.  
- Photo 01

Tree planting set at 10m from the sloping seawall and 15m from the vertical seawall to address CEDD's concern on planting close to the seawall, and the locations of tree planting (OM2, OM4) within the Potential Highways Department Depot Area are maximized to avoid obstructing the operational needs of the Depot.  
- Photo 02

Potential Highways Department Depot Area under application for temporary government land allocation (TGLA)



Tree planting set at 10m from the sloping seawall and 15m from the vertical seawall to address CEDD's concern on planting close to the seawall, and the locations of tree planting (OM2, OM4) within the Potential Highways Department Depot Area are maximized to avoid obstructing the operational needs of the Depot.  
- Photo 03

## Buffer Planting and Enhancement of Townscape Quality (OM2, OM4)



Photo 01

Tree planting set at 10m from the sloping seawall and 15m from the vertical seawall to address CEDD's concern on tree planting close to the seawall. In addition, the locations of tree planting (OM2, OM4) within the Potential Highways Department Depot Area are maximized to avoid obstructing the operational needs of the Potential Depot.

As a result of these conditions, one row of tree planting is feasible along a section of the western seawall.



Photo 02

Tree planting set at 10m from the sloping seawall and 15m from the vertical seawall to address CEDD's concern on tree planting close to the seawall. In addition, the locations of tree planting (OM2, OM4) within the Potential Highways Department Depot Area are maximized to avoid obstructing the operational needs of the Potential Depot.

At the southwestern section of the seawall, it is feasible to provide more than one row of trees without obstructing the operational needs of the Potential Depot and at the same time could address the concern of CEDD on tree planting close to the seawall.



Photo 03

Tree planting set at 10m from the sloping seawall and 15m from the vertical seawall to address CEDD's concern on tree planting close to the seawall. In addition, the locations of tree planting (OM2, OM4) within the Potential Highways Department Depot Area are maximized to avoid obstructing the operational needs of the Potential Depot.

At the southern and southwestern section of the seawall, it is feasible to provide more than one row of trees without obstructing the operational needs of the Potential Depot and at the same time could address the concern of CEDD on tree planting close to the seawall.



## Slope Planting

CODE	BOTANICAL NAME	CHINESE NAME	SIZE (mm) HEIGHT (H) X SPREAD (S)	SPACING (mm)
WHIP				
BRI.TOM.	<i>Bridelia tomentosa</i> *	土蜜樹	WHIP	1500-2000
GOR.AXI.	<i>Gordonia axillaris</i> *	大頭茶	WHIP	1500-2000
LIT.GLU.	<i>Litsea glutinosa</i> *	潺槁樹	WHIP	1500-2000
PHY.EMB.	<i>Phyllanthus emblica</i> *	餘甘子	WHIP	1500-2000
REE.THY.	<i>Reevesia thyrsoidea</i> *	梭羅樹	WHIP	1500-2000
TREE				
BAU.VAR.	<i>Bauhinia variegata</i>	宮粉羊蹄甲	LIGHT STANDARD/ STANDARD	4000
BOM.CEI.	<i>Bombax ceiba</i>	木棉	LIGHT STANDARD	4000-5000
BRI.TOM.	<i>Bridelia tomentosa</i> *	土蜜樹	LIGHT STANDARD	3000
CIN.BUR.(A)	<i>Cinnamomum burmannii</i> *	陰香	LIGHT STANDARD	4000
MEL.AZE.(A)	<i>Melia azedarach</i>	苦楝	LIGHT STANDARD	4000
PLU.RUB.	<i>Plumeria rubra</i>	雞蛋花	HEAVY STANDARD 2000 (H) X 2000 (S)	3500-4000
PALM				
CAR.MIT.	<i>Caryota mitis</i>	短穗魚尾葵	2500(H) x 1500(S)	2500
LIV.CHI.	<i>Livistona chinensis</i>	蒲葵	1500-2500(H) X 1500(S)	3500-4000
PHO.ROE.	<i>Phoenix roebelenii</i>	日本葵	2000(H) x 1500(S)	2000
WAS. ROB.	<i>Washingtonia robusta</i>	華盛頓葵	1500 - 2500(H) X 1500(S)	3500-4000
SHRUB				
CAL.HAE.	<i>Calliandra haematocephala</i>	紅絨球	300(H) X 300(S)	1000
FIC.MIC.'GOL'	<i>Ficus microcarpa</i> 'Golden Leaf'	黃榕	300(H) X 300(S)	500
GAR.JAS.	<i>Gardenia jasminoides</i> *	白蟬	300(H) x 300(S)	500
GOR.AXI.	<i>Gordonia axillaris</i> *	大頭茶	500(H) X 500(S)	500
HIB.ROS.	<i>Hibiscus rosa-sinensis</i>	大紅花	300(H) x 300(S)	1000
LIG.SIN.	<i>Ligustrum sinense</i> *	山指甲	300(H) x 300(S)	500
MEL.CAN.	<i>Melastoma candidum</i> *	野牡丹	300(H) X 300(S)	500
MEL.SAN.	<i>Melastoma sanguineum</i> *	毛萼	300(H) X 300(S)	500
NER.OLE.	<i>Nerium oleander</i>	夾竹桃	300(H) X 300(S)	1000
PIT.TOB.	<i>Pittosporum tobira</i> *	海桐花	300(H) x 300(S)	500
PSY. ASI.	<i>Psychotria asiatica</i> *	九節	300(H) x 300(S)	500
RHO.SIM.	<i>Rhododendron simsii</i> *	紅杜鵑	300(H) x 300(S)	500
RHO.TOM.	<i>Rhodomyrtus tomentosa</i> *	桃金娘	300(H) X 300(S)	500
SCH.ARB.	<i>Schefflera arboricola</i>	八葉	300(H) x 300(S)	500
GROUND COVER				
HYM.LIT.	<i>Hymenocallis littoralis</i>	蜘蛛蘭	300(H) X 300(S)	300
CLIMBER				
EPLAUR.	<i>Epipremnum aureum</i>	綠蘿	MIN. 4 SHOOTS PER PLANT, 300mm LONG	500
FIC.PUM.	<i>Ficus pumila</i> *	薛荔	MIN. 3 SHOOTS PER PLANT, 300- 1000mm LONG	300
LON.JAP.	<i>Lonicera japonica</i> *	金銀花	MIN. 4 SHOOTS PER PLANT, 600mm LONG	500
PAR.DAL.	<i>Parthenocissus dalzielii</i>	爬牆虎	MIN. 3 SHOOTS PER PLANT, 600- 1000mm LONG	300/500
HYDROSEEDING / GRASS				
-	HYDROSEEDING	噴草	-	-

## NOTE:

1. ALL PROPOSED PLANT SPECIES AND SPECIFICATIONS ARE SUBJECT TO CHANGE DURING CONSTRUCTION TO SUIT THE SITE CONDITIONS.
2. SHRUB / GROUND COVER SHOULD BE PLANTED IN A STAGGERED PATTERN.
3. SIZE OF TREES SHALL REFER TO THE GENERAL SPECIFICATION FOR CIVIL ENGINEERING WORKS, 2006 EDITION.
4. GRASS SEED AS GENERAL SPECIFICATION FOR CIVIL ENGINEERING WORKS, 2006 EDITION, CLAUSE 3.26(3).
5. \* SPECIES NATIVE TO HONG KONG ACCORDING TO THE HONG KONG HERBARIUM WEBSITE.
6. + PLANT SPECIES INCLUDED IN THE ENTRUSTED LANDSCAPE WORKS TO CONTRACT NO. DC/2016/01.

## Roadside Planting

CODE	BOTANICAL NAME	CHINESE NAME	SIZE (mm) HEIGHT (H) X SPREAD (S)	SPACING (mm)
TREE				
BAU.BLA.	<i>Bauhinia x blakeana</i> * +	洋紫荊	HEAVY STANDARD	5000
BAU.VAR.	<i>Bauhinia variegata</i>	宮粉羊蹄甲	LIGHT STANDARD/ STANDARD/ HEAVY STANDARD	4000 - 5000
GAR.SUB.	<i>Garcinia subelliptica</i> +	菲島福木	LIGHT STANDARD	4000-5000
GRE.ROB.(H)	<i>Grevillea robusta</i>	銀樺	HEAVY STANDARD	5000
ILE.ROT.	<i>Ilex rotunda</i>	鐵冬青	HEAVY STANDARD	5000
LAG.SPE.	<i>Lagerstroemia speciosa</i>	大花紫薇	HEAVY STANDARD	4000-4500
PEL.TON.	<i>Peltophorum tonkinense</i> +	銀珠	HEAVY STANDARD	5000
PLU.RUB.	<i>Plumeria rubra</i>	雞蛋花	HEAVY STANDARD 2000(H) x 2000(S) - 2500(H) x 2500(S)	4000
TAB.IMP.	<i>Tabebuia impetiginosa</i>	風鈴木	HEAVY STANDARD	5000
VIB.ODO.	<i>Viburnum odoratissimum</i> * +	珊瑚樹	HEAVY STANDARD	5000
PALM				
ARE.CAT.	<i>Areca catechu</i> +	檳榔	4000(H)	4000
CAR.MIT.	<i>Caryota mitis</i> +	短穗魚尾葵	2500(H)	750
LIV.CHI.	<i>Livistona chinensis</i>	蒲葵	2500(H) x 1500(S)	3500-4000
PHO.SYL.	<i>Phoenix sylvestris</i>	銀海蠟	2000(H) x 1500(S)	4000
SHRUB				
ALL.CAT.	<i>Allamanda cathartica</i>	軟枝黃蟬	300(H) X 300(S)	300/350
DUR.REP.	<i>Duranta repens</i>	假蓬鬆	300(H) x 250(S)	400
COD.VAR.'AUC'	<i>Codiaeum variegatum</i> 'Aucubaefolium' +	灑金榕	300(H) X 300(S)	300
COD.VAR.'RED'	<i>Codiaeum variegatum</i> 'Red' +	灑金榕 (紅色)	300(H) X 300(S)	300
FIC.MIC.'GOL'	<i>Ficus microcarpa</i> 'Golden Leaf'	黃榕	300(H) X 300(S)	350/500
GAR.JAS.	<i>Gardenia jasminoides</i> *	白蟬	300(H) x 300(S)	500
GOR.AXI.	<i>Gordonia axillaris</i> *	大頭茶	300(H) X 300(S)	350
IXO.CHI.	<i>Ixora chinensis</i> * +	龍船花	300(H) x 300(S)	300
LIG.SIN.	<i>Ligustrum sinense</i> *	山指甲	300(H) x 250(S)	400
MEL.CAN.	<i>Melastoma candidum</i> *	野牡丹	300(H) X 300(S)	350
MEL.SAN.	<i>Melastoma sanguineum</i> *	毛萼	300(H) X 300(S)	350
NER.OLE.	<i>Nerium oleander</i>	夾竹桃	400(H) x 250(S) / 300(H) X 300(S)	400/500
PIT.TOB.	<i>Pittosporum tobira</i> * +	海桐花	300(H) x 300(S)	500
RHA.IND.	<i>Rhaphiolepis indica</i> * +	車輪梅	300(H) x 300(S)	300
RHO.TOM.	<i>Rhodomyrtus tomentosa</i> *	桃金娘	300(H) X 300(S)	350/500
SCH.ARB.	<i>Schefflera arboricola</i> +	八葉	300(H) x 300(S)	350/ 500
ZAM.FUR.	<i>Zamia furfuracea</i> +	牙買加蘇鐵	400(H) x 500(S)	500
GROUND COVER				
ARA.DUR.	<i>Arachis duranensis</i>	金花生	100(H) x 200(S)	200
ASP.DEN.	<i>Asparagus densiflorus</i> 'Sprengeri' +	非洲天門冬	200(H) x 300(S)	200
HYM.LIT.	<i>Hymenocallis littoralis</i>	蜘蛛蘭	300(H) X 300(S)	300
NEP.AUR.	<i>Nephrolepis auriculata</i> * +	腎蕨	250(H) x 250(S)	150
PHY.MYR.	<i>Phyllanthus myrtifolius</i> +	錫蘭葉下珠	300(H) x 300(S)	300
TRA.SPA.	<i>Tradescantia spathacea</i>	蚌花	200(H) x 300(S)	250
WED.TRI.	<i>Wedelia trilobata</i>	三裂葉鵝掌楸	200(H) x 150(S)	300
CLIMBER				
EPLAUR.	<i>Epipremnum aureum</i> +	綠蘿	MIN. 4 SHOOTS PER PLANT, 300mm LONG	500/300
FIC.PUM.	<i>Ficus pumila</i> *	薛荔	MIN. 3 SHOOTS PER PLANT, 300- 1000mm LONG	300
PAR.DAL.	<i>Parthenocissus dalzielii</i>	爬牆虎	MIN. 3 SHOOTS PER PLANT, 600- 1000mm LONG	300
HYDROSEEDING / GRASS				
-	HYDROSEEDING	噴草	-	-
AXO.COM.	<i>Axonopus compressus</i> +	地毯草(大葉草)	Whole piece turf 300(L)x300(W)x50(H)	-



## Slope Planting

CODE	BOTANICAL NAME	CHINESE NAME	SIZE (mm) HEIGHT (H) X SPREAD (S)	SPACING (mm)
WHIP				
BAU.VAR.	<i>Bauhinia variegata</i>	宮粉羊蹄甲	WHIP	1000
BRI.TOM.	<i>Bridelia tomentosa</i> *	土密樹	WHIP	1000-2000
GOR.AXL.	<i>Gordonia axillaris</i> *	大頭茶	WHIP	1000
LIT.GLU.	<i>Litsea glutinosa</i> *	潺槁木	WHIP	1000
MAL.PAN.	<i>Mallotus paniculatus</i> *	白楸	WHIP	1000
PHY.EMB.	<i>Phyllanthus emblica</i> *	餘甘子(油甘子)	WHIP	1000
SAP.DIS.	<i>Sapium discolor</i> *	山烏柏	WHIP	1000
TREE				
BAU.VAR.(L)	<i>Bauhinia variegata</i>	宮粉羊蹄甲	LIGHT STANDARD	3000
BAU.VAR.(H)	<i>Bauhinia variegata</i>	宮粉羊蹄甲	HEAVY STANDARD	4000-4500
BRI.TOM.	<i>Bridelia tomentosa</i> *	土密樹	LIGHT STANDARD	3000
BOM.CEL.(L)	<i>Bombax ceiba</i>	木棉	LIGHT STANDARD	3000
BOM.CEL.(L)	<i>Bombax ceiba</i>	木棉	HEAVY STANDARD	4500-5000
CIN.BUR.	<i>Cinnamomum burmannii</i> *	陰香	LIGHT STANDARD	3000
CIN.BUR.	<i>Cinnamomum burmannii</i> *	陰香	HEAVY STANDARD	4500-5000
LIQ.FOR.	<i>Liquidambar formosana</i> *	楓香	LIGHT STANDARD	3000
LIT.GLU.(L)	<i>Litsea glutinosa</i> *	潺槁木	LIGHT STANDARD	3000
MAC.CHE.	<i>Machilus chekiangensis</i> *	浙江潤楠	LIGHT STANDARD	3000
REE.THY.	<i>Reevesia thyrsoidea</i> *	梭羅樹	LIGHT STANDARD	3000
SCH.SUP.	<i>Schima superba</i> *	木荷(荷樹)	LIGHT STANDARD	3000
STELAN.	<i>Sterculia lanceolata</i> *	假蒴婆	LIGHT STANDARD	3000
STELAN.	<i>Sterculia lanceolata</i> *	假蒴婆	HEAVY STANDARD	4500-5000
VIB.ODO.	<i>Viburnum odoratissimum</i> *	珊瑚樹	LIGHT STANDARD	3000
SHRUB				
DES.CHI.	<i>Desmos chinensis</i> *	假鷹爪	300(H) x 300(S)	500
ILE.ASP.	<i>Ilex asprella</i> *	梅葉冬青	300(H) x 300(S)	500
ILE.PUB.	<i>Ilex pubescens</i> *	毛冬青	300(H) x 300(S)	500
LIG.SIN.	<i>Ligustrum sinense</i>	山指甲	300(H) x 300(S)	350-500
MEL.CAN.	<i>Melastoma candidum</i> *	野牡丹	300(H) x 300(S)	350-500
MEL.SAN.	<i>Melastoma sanguineum</i> *	毛萼	300(H) x 300(S)	350-500
NER.OLE.	<i>Nerium oleander</i>	夾竹桃	300(H) x 300(S)	350
PSY.ASI.	<i>Psychotria asiatica</i> *	九節	300(H) x 300(S)	500
RHA.IND.	<i>Rhaphiolepis indica</i> *	車輪梅	300(H) x 300(S)	350-500
RHO.PUL.	<i>Rhododendron pulchrum</i>	紫杜鵑	300(H) x 300(S)	500
RHO.SIM.	<i>Rhododendron simsii</i> *	紅杜鵑	300(H) x 300(S)	500
SCH.ARB.	<i>Schefflera arboricola</i>	八葉木	300(H) x 300(S)	500
SCH.VAR.	<i>Schefflera arboricola</i> 'Variegata'	花葉八葉木	300(H) x 300(S)	500
GROUND COVER				
NEP.AUR.	<i>Nephrolepis auriculata</i> *	腎蕨	300(H) x 300(S)	100-300
NEP.HIR.	<i>Nephrolepis hirsutula</i> *	毛葉腎蕨	300(H) x 300(S)	100-300
CLIMBER				
BAU.COR.	<i>Bauhinia corymbosa</i>	首冠藤	MIN. 5 SHOOTS PER PLANT, 600mm LONG	300-1000
BOU.SPE.	<i>Bougainvillea spectabilis</i>	簕杜鵑	MIN. 5 SHOOTS PER PLANT, 600mm LONG	300-500
FIC.PUM.	<i>Ficus pumila</i> *	薛荔	MIN. 3 SHOOTS PER PLANT, 1000mm LONG	300
LON.JAP.	<i>Lonicera japonica</i> *	忍冬(金銀花)	MIN. 5 SHOOTS PER PLANT, 600mm LONG	300-1000
PAR.DAL.	<i>Parthenocissus dalzielii</i>	爬牆虎	MIN. 3 SHOOTS PER PLANT, 1000mm LONG	300-1000
WED.TRI.	<i>Wedelia trilobata</i>	三裂葉蟛蜞菊	MIN. 5 SHOOTS PER PLANT, 600mm LONG	300

## Roadside Planting

CODE	BOTANICAL NAME	CHINESE NAME	SIZE (mm) HEIGHT (H) X SPREAD (S)	SPACING (mm)
TREE				
BRA.ACE.	<i>Brachychiton acerifolius</i>	槭葉蘋婆	HEAVY STANDARD	4500-5000
DEL.REG.	<i>Delonix regia</i>	鳳凰木	HEAVY STANDARD	N/A
GAR.SUB.	<i>Garcinia subelliptica</i>	菲島福木(福木)	LIGHT STANDARD	3000
MEL.CUM.	<i>Melaleuca cajuputi subsp. cumingiana</i>	白千層	HEAVY STANDARD	4000
STELAN.	<i>Sterculia lanceolata</i> *	假蒴婆	HEAVY STANDARD	5000
TAB.CHR.	<i>Tabebuia chrysantha</i>	黃花風鈴木	HEAVY STANDARD	5000
TAB.IMP.	<i>Tabebuia impetiginosa</i>	風鈴木	HEAVY STANDARD	5000
TER.MAN.	<i>Terminalia mantaly</i>	小葉欖仁	HEAVY STANDARD	5000
PALM				
ARC.ALE.	<i>Archontophoenix alexandrae</i>	假檳榔	3500(H) x 1500(S)	4000
CHR.LHT.	<i>Chrysalidocarpus lutescens</i>	散尾葵	1500(H)	2000
LIV.CHI.	<i>Livistona chinensis</i>	蒲葵	2000(H) x 1500(S)	2500
PHO.ROE.	<i>Phoenix roebelenii</i>	日本葵	2000(H) x 1500(S)	2500-3000
WOD.BIF.	<i>Wodyetia bifurcata</i>	狐尾椰子	2500(H) x 1500(S)	3500
SHRUB				
DUR.GOL.	<i>Duranta repens</i> 'Golden'	金連翹	300(H) x 300(S)	300
IXO.CHI.	<i>Ixora chinensis</i> *	龍船花	300(H) x 300(S)	300
IXO.COC.	<i>Ixora coccinea</i>	橙紅龍船花	300(H) x 300(S)	300
IXO.LUT.	<i>Ixora coccinea</i> 'Lutea'	黃花龍船花	300(H) x 300(S)	300
RHA.IND.	<i>Rhaphiolepis indica</i> *	車輪梅	300(H) x 300(S)	300
RHO.PUL.	<i>Rhododendron pulchrum</i>	紫杜鵑	300(H) x 300(S)	300
RHO.SIM.	<i>Rhododendron simsii</i> *	紅杜鵑	300(H) x 300(S)	300
SCH.ARB.	<i>Schefflera arboricola</i>	八葉木	300(H) x 300(S)	300
SCH.VAR.	<i>Schefflera arboricola</i> 'Variegata'	斑葉鵝掌藤 (花葉八葉木)	300(H) x 300(S)	300
GROUND COVER				
ARA.DUR.	<i>Arachis duranensis</i>	金花生	100(H) x 200(S)	200
ASP.DEN.	<i>Asparagus densiflorus</i> 'Myersii'	狐尾天冬	300(H) x 300(S)	250
ASP.SPR.	<i>Asparagus densiflorus</i> 'Sprengeri'	非洲天門冬(天冬)	100(H) x 200(S)	200
CUP.HYS.	<i>Cuphea hyssopifolia</i>	細葉雪茄花	250(H) x 300(S)	250-300
DIA.VAR.	<i>Dianella tasmanica</i> 'Variegata'	花葉山菅蘭	250(H) x 250(S)	250
LAN.FLA.	<i>Lantana camara</i> 'Flava'	黃花馬纓丹	200(H) x 200(S)	200
LAN.MON.	<i>Lantana montevidensis</i>	小葉馬纓丹	200(H) x 200(S)	200
NEP.AUR.	<i>Nephrolepis auriculata</i> *	腎蕨	300(H) x 300(S)	100-300
OPH.JAP.	<i>Ophiopogon japonicus</i> *	沿階草	200(H) x 200(S)	200

## NOTE:

1. ALL PROPOSED PLANT SPECIES AND SPECIFICATIONS ARE SUBJECT TO CHANGE DURING CONSTRUCTION TO SUIT THE SITE CONDITIONS.
2. SHRUB / GROUND COVER SHOULD BE PLANTED IN A STAGGERED PATTERN.
3. SIZE OF TREES SHALL REFER TO THE GENERAL SPECIFICATION FOR CIVIL ENGINEERING WORKS, 2006 EDITION.
4. GRASS SEED AS GENERAL SPECIFICATION FOR CIVIL ENGINEERING WORKS, CLAUSE 3.26(3).
5. \* SPECIES NATIVE TO HONG KONG ACCORDING TO THE HONG KONG HERBARIUM WEBSITE.



Northern Landfall - Roadside Planting

CODE	BOTANICAL NAME	CHINESE NAME	SIZE (mm) HEIGHT (H) X SPREAD (S)	SPACING (mm)
TREE				
BAU.BLA	<i>Bauhinia x blakeana</i> *	洋紫荆	HEAVY STANDARD	4500-5000
BAU.VAR	<i>Bauhinia variegata</i>	宮粉羊蹄甲	HEAVY STANDARD	4500-5000
ELA.API	<i>Elaeocarpus apiculatus</i>	尖葉杜英	HEAVY STANDARD	6000
ELA.HAI	<i>Elaeocarpus hainanensis</i>	水石榕	HEAVY STANDARD	5000
GAR.SUB	<i>Garcinia subelliptica</i>	菲島福木	HEAVY STANDARD	3500-4000
GRE.ROB	<i>Grevillea robusta</i>	銀樺	HEAVY STANDARD	4500-5000
MEL.QUI	<i>Melaleuca quinquenervia</i>	白千層	HEAVY STANDARD	4500-5000
PLU.MUL	<i>Plumeria rubra</i> (multi-colour flower)	雞蛋花(多色花)	HEAVY STANDARD 2000(H) x 2000(S) - 2500(H) x 2500(S)	4000-4500
PLU.RUB	<i>Plumeria rubra</i> (red flower)	雞蛋花(紅花)	HEAVY STANDARD 2000(H) x 2000(S) - 2500(H) x 2500(S)	4000-4500
PLU.RUB(Y)	<i>Plumeria rubra</i> (yellow flower)	雞蛋花(黃花)	HEAVY STANDARD 2000(H) x 2000(S) - 2500(H) x 2500(S)	4000-4500
PON.PIN	<i>Pongamia pinnata</i> *	水黃皮	HEAVY STANDARD	5000-6000
STEL.LAN	<i>Sterculia lanceolata</i> *	假蘋婆	HEAVY STANDARD	4500-5000
TER.CAT	<i>Terminalia catappa</i>	欖仁樹	HEAVY STANDARD	5000-7000
VIB.ODO	<i>Viburnum odoratissimum</i> *	珊瑚樹	HEAVY STANDARD	4500-5000
XAN.CHR	<i>Xanthostemon chrysanthus</i>	金蒲桃	HEAVY STANDARD	5000
PALM				
ARE.CAT	<i>Areca catechu</i>	檳榔	3000(H) x 1500(S)	4000
HYO.LAG	<i>Hyophorbe lagenicaulis</i>	酒瓶椰子	2000(H) x 1500(S)	3000
LIV.CHI	<i>Livistona chinensis</i>	蒲葵	3000(H) x 2000(S)	4000-4500
ROY.REG	<i>Roystonea regia</i>	王棕	4000(H) x 2000(S)	4500-5000
WOD.BIF	<i>Wodyetia bifurcata</i>	狐尾椰子	3000(H) x 1500(S)	4500
SHRUB				
CMI	<i>Carmona microphylla</i>	福建茶	300(H) x 300(S)	300
CRE	<i>Cycas revoluta</i>	蘇鐵	500(H) x 600(S)	N/A
DLU	<i>Dyopsis lutescens</i>	散尾葵	2000(H) x 2000(S)	2000
JKA	<i>Juniperus chinensis</i> 'Kaizuka'	龍柏球	600(H) x 600(S)	N/A
ICH	<i>Ixora chinensis</i> *	龍船花	300(H) x 300(S)	300
ICO	<i>Ixora coccinea</i>	橙紅龍船花	300(H) x 300(S)	300
ILU	<i>Ixora coccinea</i> 'Lutea'	黃花龍船花	400(H) x 300(S)	300
IST	<i>Ixora stricta</i>	細葉龍船花	250(H) x 250(S)	250
IWE	<i>Ixora westii</i>	粉紅龍船花	400(H) x 300(S)	300
NOL	<i>Nerium oleander</i>	夾竹桃	500(H) x 400(S)	500
PTO	<i>Pittosporum tobira</i>	海桐	300(H) x 300(S)	350
PMA	<i>Podocarpus macrophyllus</i> *	羅漢松	600(H) x 500(S)	N/A
PAX	<i>Polyspora axillaris</i> *	大頭茶	300(H) x 300(S)	350
RIN	<i>Raphiolepis indica</i> *	車輪梅	300(H) x 300(S)	300-350
RPU	<i>Rhododendron pulchrum</i>	錦繡杜鵑	300(H) x 300(S)	350
RSI	<i>Rhododendron simsii</i> *	紅杜鵑	250(H) x 250(S)	350
RTO	<i>Rhodomyrtus tomentosa</i> *	桃金娘	300(H) x 300(S)	350
STA	<i>Scaevola taccada</i> *	草海桐	300(H) x 300(S)	350
SDA	<i>Schefflera arboricola</i> 'Dazzle'	黃金八葉	300(H) x 300(S)	350
SVA	<i>Schefflera arboricola</i> 'Variegata'	斑葉鵝掌藤 (花葉八葉木)	300(H) x 300(S)	300-350

CODE	BOTANICAL NAME	CHINESE NAME	SIZE (mm) HEIGHT (H) X SPREAD (S)	SPACING (mm)
GROUND COVER				
ADU	<i>Arachis duranensis</i>	蔓花生 (金花生)	100(H) x 200(S)	200
AMY	<i>Asparagus densiflorus</i> 'Myersii'	狐尾天冬	300(H) x 300(S)	300
ASP	<i>Asparagus densiflorus</i> 'Sprengerii'	非洲天門冬	100(H) x 200(S)	200
CHY	<i>Cuphea hyssopifolia</i>	細葉萼距花	200(H) x 250(S)	250
CRO	<i>Catharanthus roseus</i>	長春花	200(H) x 200(S)	200
LFL	<i>Lantana camara</i> 'Flava'	黃花馬纓丹	200(H) x 200(S)	200
LMO	<i>Lantana montevidensis</i>	小葉馬纓丹	200(H) x 200(S)	200
NAU	<i>Nephrolepis auriculata</i> *	腎蕨	250(H) x 250(S)	200
NHI	<i>Nephrolepis hirsutula</i> *	毛葉腎蕨	250(H) x 250(S)	200
ONA	<i>Ophiopogon japonicus</i> 'Nana'	玉龍草	50(H)	N/A
WTR	<i>Wedelia trilobata</i>	三裂葉鵝蚌菊	150(H) x 200(S)	200
CLIMBER				
BCO	<i>Bauhinia corymbosa</i>	首冠藤	MIN. 4 SHOOTS PER PLANT, 600mm LONG	300-500
QIN	<i>Quisqualis indica</i>	使君子	MIN. 4 SHOOTS PER PLANT, 600mm LONG	300-500

NOTE:

1. ALL PROPOSED PLANT SPECIES AND SPECIFICATIONS ARE SUBJECT TO CHANGE DURING CONSTRUCTION TO SUIT THE SITE CONDITIONS.
2. SHRUB / GROUND COVER SHOULD BE PLANTED IN A STAGGERED PATTERN.
3. SIZE OF TREES SHALL REFER TO THE GENERAL SPECIFICATION FOR CIVIL ENGINEERING WORKS, 2006 EDITION.
4. GRASS SEED AS GENERAL SPECIFICATION FOR CIVIL ENGINEERING WORKS, CLAUSE 3.26(3).
5. \* SPECIES NATIVE TO HONG KONG ACCORDING TO THE HONG KONG HERBARIUM WEBSITE.

Agreement No. CE7/2011(HY)

Tuen Mun - Chek Lap Kok Link - Northern Connection Tunnel Buildings, Electrical and Mechanical Works  
Planting Schedule (Contract 4 - HY/2017/10)

Drawing No.: Figure 6.3



**Southern Landfall (Contract 1 - HY/2012/07)**

CODE	BOTANICAL NAME	CHINESE NAME	SIZE (mm) HEIGHT (H) X SPREAD (S)	SPACING (mm)
TREE				
GRE.ROB.	<i>Grevillea robusta</i>	銀葉	HEAVY STANDARD	4000-5000
PLU.RUB.	<i>Plumeria rubra</i>	雞蛋花(紅)	HEAVY STANDARD 2000(H) x 2000(S) - 3500(H) x 2500(S)	4000-5000
SHRUB				
RUS.EQU.	<i>Russelia equisetiformis</i>	濕花	300(H) x 300(S)	250
GROUNDCOVER				
IPO.PES.	<i>Ipomoea pes-caprae</i> *	海邊牽牛	200(H) x 200(S)	200
LAN.MON.	<i>Lantana montevidensis</i>	小葉烏銀丹 (銅邊金邊)	200(H) x 200(S)	250
OPH.JAP.	<i>Ophiopogon japonicus</i> *	麥冬(沿路草)	150(H) x 200(S)	200
SYN.POD.	<i>Syngonium podophyllum</i>	白蝴蝶	100(H) x 200(S)	200
TRA.SPA.	<i>Tredecantia spathacea</i>	蚌花	200(H) x 300(S)	250
ZEP.RUS.	<i>Zephyranthes rosea</i>	玫瑰蘭	100(H) x 200(S)	150
CLIMBER				
MON.DTL.	<i>Monstera deliciosa</i>	龜背竹	MIN. 5 SHOOTS PER PLANT, 300mm LONG	500
HYDROSEEDING / GRASS				
-	HYDROSEEDING	噴草	-	-
ZOY.JAP.	<i>Zoysia japonica</i>	細結草	300(L) x 300(W) x 50(H)	N/A

**NOTE:**

1. ALL PROPOSED PLANT SPECIES AND SPECIFICATIONS ARE SUBJECT TO CHANGE DURING CONSTRUCTION TO SUIT THE SITE CONDITIONS.
2. SHRUB / GROUNDCOVER SHOULD BE PLANTED IN A STAGGERED PATTERN.
3. SIZE OF TREES SHALL REFER TO THE GENERAL SPECIFICATION FOR CIVIL ENGINEERING WORKS, 2006 EDITION.
4. GRASS SEED AS GENERAL SPECIFICATION FOR CIVIL ENGINEERING WORKS, CLAUSE 3.26(3).
5. \* SPECIES NATIVE TO HONG KONG ACCORDING TO THE HONG KONG HERBARIUM WEBSITE.
6. THE PLANT SPECIES ALLOWED FOR PLANTING IN EACH ZONE STATED IN THE HONG KONG INTERNATIONAL AIRPORT (HKIA) APPROVED PLANT SPECIES LIST (Revision 1, 0.1, October 2015).

**Southern Landfall (Contract 4 - HY/2017/10)**

CODE	BOTANICAL NAME	CHINESE NAME	SIZE (mm) HEIGHT (H) X SPREAD (S)	SPACING (mm)
TREE				
CV	<i>Callistemon viminalis</i>	串錢柳	HEAVY STANDARD	4000-5000
GR	<i>Grevillea robusta</i>	銀葉	HEAVY STANDARD	4000-5000
PRR	<i>Plumeria rubra</i> (red flower)	雞蛋花(紅花)	HEAVY STANDARD 2000(H) x 2000(S) - 2500(H) x 2500(S)	4000-5000
PRY	<i>Plumeria rubra</i> (yellow flower)	雞蛋花(黃花)	HEAVY STANDARD 2000(H) x 2000(S) - 2500(H) x 2500(S)	4000-5000
PLU.MUL.	<i>Plumeria rubra</i> (multi-colour flower)	雞蛋花(多色花)	HEAVY STANDARD 2000(H) x 2000(S) - 2500(H) x 2500(S)	4000-5000
GROUNDCOVER				
IPL	<i>Ipomoea pes-caprae</i> *	海邊牽牛	150(H) x 200(S)	200
LMO	<i>Lantana montevidensis</i>	小葉烏銀丹 (銅邊金邊)	200(H) x 300(S)	200
OPA	<i>Ophiopogon japonicus</i> *	麥冬(沿路草)	100(H) x 100(S)	100
SPO	<i>Syngonium podophyllum</i>	白蝴蝶	100(H) x 200(S)	200
TSP	<i>Tredecantia spathacea</i> 'dwarf'	蚌花	100(H) x 100(S)	100
WTE	<i>Wedelia trilobata</i>	三裂黃連葉	150(H) x 200(S)	200
GRASS				
ZJA	<i>Zoysia japonica</i>	細結草	300(L) x 300(W) x 50(H)	N/A

**NOTE:**

1. ALL PROPOSED PLANT SPECIES AND SPECIFICATIONS ARE SUBJECT TO CHANGE DURING CONSTRUCTION TO SUIT THE SITE CONDITIONS.
2. SHRUB / GROUNDCOVER SHOULD BE PLANTED IN A STAGGERED PATTERN.
3. SIZE OF TREES SHALL REFER TO THE GENERAL SPECIFICATION FOR CIVIL ENGINEERING WORKS, 2006 EDITION.
4. GRASS SEED AS GENERAL SPECIFICATION FOR CIVIL ENGINEERING WORKS, CLAUSE 3.26(3).
5. \* SPECIES NATIVE TO HONG KONG ACCORDING TO THE HONG KONG HERBARIUM WEBSITE.
6. THE PLANT SPECIES ALLOWED FOR PLANTING IN EACH ZONE STATED IN THE HONG KONG INTERNATIONAL AIRPORT (HKIA) APPROVED PLANT SPECIES LIST (Revision 1, 0.1, October 2015).

Agreement No. CE7/2011(HY)

Tuen Mun - Chek Lap Kok Link - Northern Connection Tunnel Buildings, Electrical and Mechanical Works  
Planting Schedule for Southern Landfall (Contract 1 – HY/2012/07 and Contract 4 – HY/2017/10)

Drawing No.: Figure 6.4